



Solid State Devices, Inc.

14701 Firestone Blvd * La Mirada, Ca 90638
 Phone: (562) 404-4474 * Fax: (562) 404-1773
 ssdi@ssdi-power.com * www.ssdi-power.com

**SDA5000
 thru
 SDA25000**

**0.5 AMPS
 5,000 – 25,000 VOLTS
 STANDARD RECOVERY
 HIGH VOLTAGE RECTIFIER**

Designer's Data Sheet

Part Number/Ordering Information ^{1/}
SDA

Screening ^{2/}
 — = Not Screened
 TX = TX Level
 TXV = TXV
 S = S Level

Voltage/Family

- 5000 = 5000V
- 7500 = 7500V
- 10000 = 10000V
- 12500 = 12500V
- 15000 = 15000V
- 20000 = 20000V
- 25000 = 25000V

- FEATURES:**
- Average Output Current 0.5 Amps
 - PIV 5000 to 25,000 Volts
 - Low Reverse Leakage
 - Low Distributed and GRD Capacitance
 - Corona Free
 - Superior Thermal Shock Resistance
 - Also available in Fast, Ultra Fast, and Hyper-Fast versions. Consult Factory.
 - TX, TXV, and S-Level Screening Available. Consult Factory

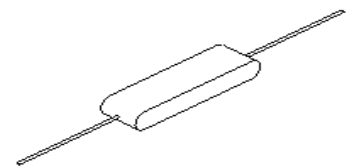
ELECTRICAL CHARACTERISTICS

Part Number	Peak Inverse Voltage (per leg)	Average DC Output Current T _c = Case Temp		Reverse Recovery Time	Maximum Surge Current (1 Cycle)	Maximum Forward Voltage (per leg)	Maximum Reverse Current (per leg) @ PIV		Case Size		
		I _{F(AV)}					I _R		A	B	C
Symbol	PIV	I _{F(AV)}		t _{rr}	I _{FRM}	V _F	I _R		INCHES		
Units	Volts	Amps		μs	Amps	Volts	μA				
Conditions		55°C	100°C		25°C	I _F = 500 mA	25°C	100°C	A	B	C
SDA5000	5000	0.5	0.33	5	50	5	1	50	1.125	0.25	0.50
SDA7500	7500	0.5	0.33	5	50	7.5	1	50	1.165	0.25	0.50
SDA10000	10000	0.5	0.33	5	50	10	1	50	2.000	0.25	0.50
SDA12500	12500	0.5	0.33	5	50	12.5	1	50	2.375	0.25	0.50
SDA15000	15000	0.5	0.33	5	50	15	1	50	2.750	0.25	0.50
SDA20000	20000	0.5	0.33	5	50	20	1	50	3.500	0.25	0.50
SDA25000	25000	0.5	0.33	5	50	25	1	50	4.250	0.25	0.50

NOTES:

1. Maximum forward voltage measured with instantaneous forward pulse of 300 μsec minimum.
2. Unless Otherwise Specified, All Electrical Characteristics @25°C
3. Reverse Recovery Test Conditions: I_F = 0.5A, I_R = 1A, I_{RR} = 0.25A, T_A = 25°C

HV STICK



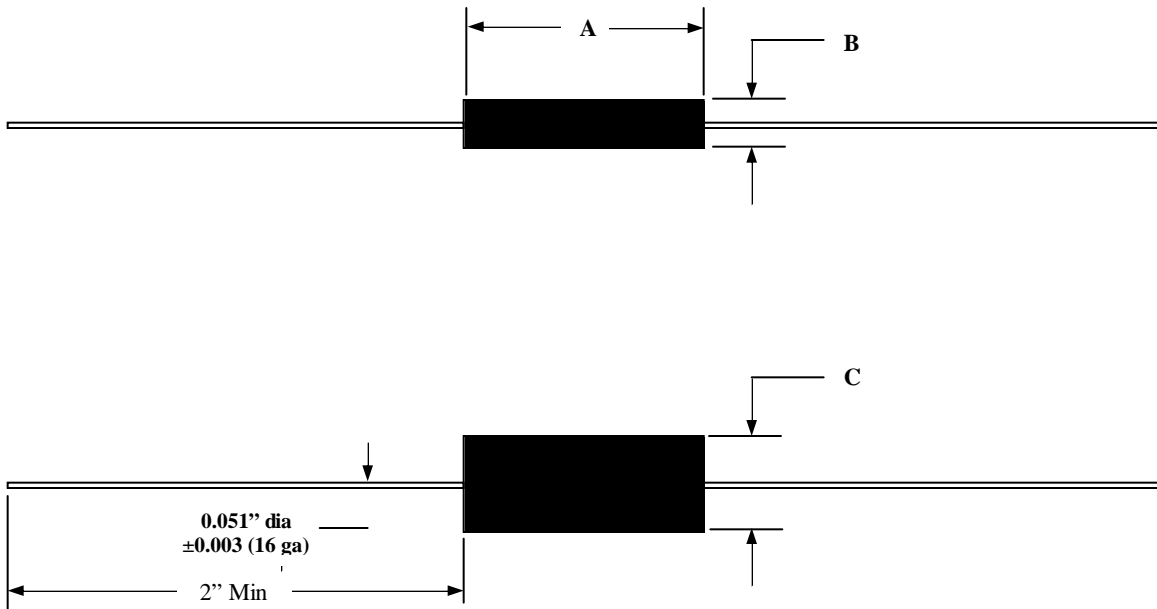


Solid State Devices, Inc.

14701 Firestone Blvd * La Mirada, Ca 90638
Phone: (562) 404-4474 * Fax: (562) 404-1773
ssdi@ssdi-power.com * www.ssdi-power.com

**SDA5000
thru
SDA25000**

PACKAGE OUTLINE: SDA5000 thru SDA25000



*For information on curves, contact the Factory Representative for Engineering Assistance.

NOTE: All specifications are subject to change without notification.
SCD's for these devices should be reviewed by SSDI prior to release.

DATA SHEET #: RC0079A

DOC