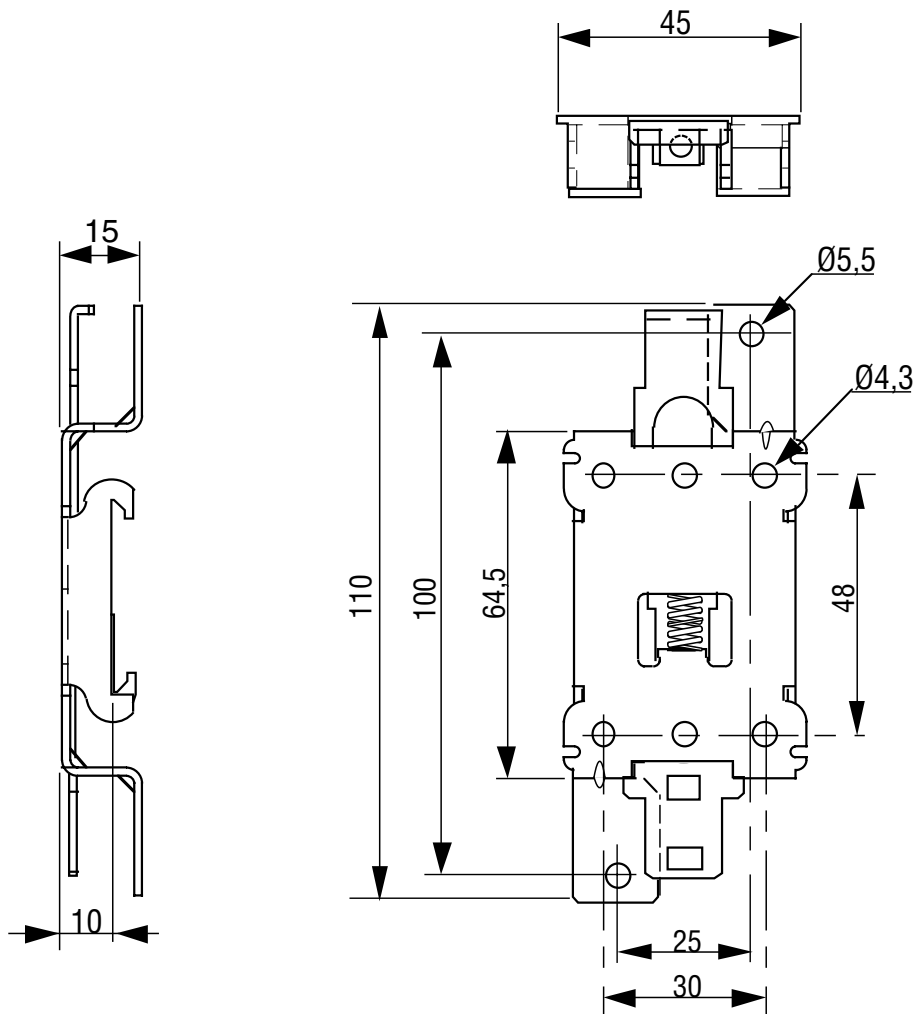


FIXATION Rail DIN DIN rail Adaptor

1LD12020

Poids/weight: 66gr



ISO 9001
N° 1993/1106a

Proud to serve you

All technical characteristics are subject to change without previous notice.
Caractéristiques sujettes à modifications sans préavis.

E-Mail : celduc-relais@celduc.com

celduc[®]
r e l a i s

www.celduc.com