


Integrating Sound Level Meter

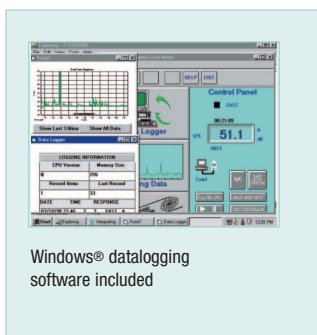
 **Leq and SEL measurements with built-in datalogger and PC interface**
With built-in datalogger and PC interface

Features:

- 4 Digit multifunction LCD with analog bargraph
- Precise linearity over wide range (100dB)
- Display modes: SPL, SEL, MAX-L/MIN-L, and Leq
- Programmable integrating time
- A and C Frequency weighting
- Impulse/Fast/Slow response settings
- Datalogging function records up to 32,000 records
- Real time calendar/clock
- Built-in RS-232 interface with included Windows[®] datalogging software
- Tripod mount
- Meets IEC 651/804 Type 2 and ANSI S1.4 Type 2 specifications
- Complete with windscreen, adjustment screwdriver, RS-232 cable, 9 to 25 pin gender changer, Windows[™] software, battery, and case

Applications:

- Perform Leq and SEL measurements
- OSHA compliance Testing
- Noise Ordinance
- Machine Noise Evaluation
- Data Storage for pertinent records



Ordering Information:

- 407780Integrating Sound Level Datalogger
- 407780-NIST407780 with Calibration Traceable to NIST.
- 40776694/114 dB Calibrator for 0.5" or 1" microphones
- 40705XInsulated recorder cable 3' for AC/DC Outputs
- 144118110V AC Adaptor
- 144220220V AC Adaptor
- 144240240V AC Adaptor
- 407764-EXT6' (183cm) Microphone Extension Cable

| Specifications | |
|-----------------------------|---|
| Applicable Standards | IEC 651 And 804 Type 2, ANSI S1.4 Type 2 |
| Accuracy | ±1.5dB (ref 94dB@1KHz) |
| Resolution | 0.1dB |
| Digital Display | 4 digital LCD |
| Measurement Parameters | SPL, Leq, SEL, MaxL, MinL |
| Measurement Range | 30dB to 130dB |
| Linearity Range | 100dB |
| Measurement Frequency Range | 31.5Hz to 8KHz |
| Frequency Weighting | A and C |
| Response | Impulse, Fast and Slow |
| Microphone | 1/2 " Electret condenser microphone |
| Sampling time | updated every 0.5s |
| Bargraph | 4dB steps, 100dB range, 100ms update |
| Display Warning Function | |
| Overrange Indicator | Displayed at the upper limit |
| Underrange Indicator | Displayed at the lower limit |
| Analog AC/DC Output | 2Vrms (at full scale), 10mVDC/dB |
| Power Supply | Four 1.5V AA batteries, Optional AC adapter |
| Battery Life | Approximately 20 hours |
| Dimensions | 10.4x2.8x0.8" (265x72x21mm) |
| Weight | 10.9oz (310g) |