

# R-Flex™ Multipurpose Coupling System



- Corrects for angular sensor shaft misalignments
- Compatible with all our RVDTs & RVITs
- Mates to multiple shaft sizes
- Machined from high-strength aluminum alloy
- Light weight

## DESCRIPTION

The R-Flex™ coupling system is a versatile, easily installed coupling device that corrects for most types of angular sensor shaft misalignments. R-Flex™ provides excellent hysteresis-free repeatability. The unique six-beam R-Flex™ coupling adapter design provides superior performance under the most severe misalignment conditions. R-Flex™ is the perfect coupling for all our angular sensors as it does not degrade the repeatability or resolution. The coupling adapter is machined from high strength, yet flexible, aluminum alloy (black anodized). Its six-beam construction prevents windup under most operating conditions and virtually eliminates coupling induced phase lag in high speed closed loop control applications. Four (4) provided insert bushings allow mating the sensors with five (5) different shaft diameters.

Measurement Specialties, Inc. (NASDAQ MEAS) offers a full range of genuine Schaevitz® position sensors, signal conditioners, as well as many other types of sensors. Data sheets can be downloaded from our web site at: <http://www.meas-spec.com/datasheets.aspx>

## FEATURES

- Mates to five (5) shaft sizes
- Integral clamps
- Six-beam construction
- Eliminates windup
- Hysteresis free
- Machined from aluminum alloy
- Anodized (Black) for corrosion protection
- Light weight

## APPLICATIONS

- Use with all our RVDTs and RVITs
- For correction of:
  - Angular misalignment
  - Parallel misalignment
  - Skewed misalignment
  - Axial motion
  - Rotary oscillation
- Ideal for high speed closed loop controls

# R-Flex™ Multipurpose Coupling System

## PERFORMANCE SPECS

Dimensions		Misalignment Correction	
Outside Diameter	0.75" [19.05 mm]	Angular Offset	2 degrees
Length	0.75" [19.05 mm]	Parallel Offset	.005" [0.13mm]
Clamping Length	.2" [5 mm]	Axial Motion	.005" [0.13mm]
Sensor Shaft Diameter (B1)	3/16" (0.1875") [4.76]		
Mating Shaft Diameters:		Construction	
With 0.187 Insert Bushing	3/16" (0.1875") [4.76]	Coupling Adapter Material	2024-T3.51 or 7075-T6
With 5mm Insert Bushing	0.197" [5mm]	Coupling Adapter Finish	Black anodized
With 6mm Insert Bushing	0.236" [6mm]	Insert Bushing Material	G10 Phenolic (natural color)
With 0.250 Insert Bushing	0.250" [6.35mm]		
Without Insert Bushing	0.394 [10mm]		

## DIMENSIONS

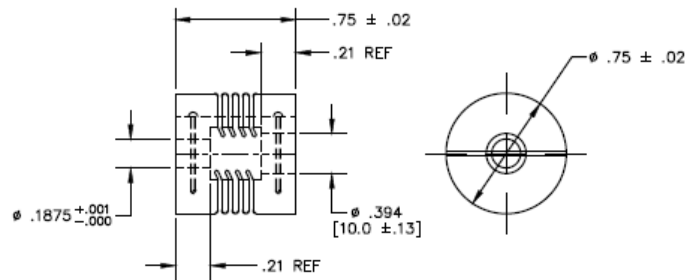


Figure 1: Coupling Adapter (Dimensions in inch [mm])

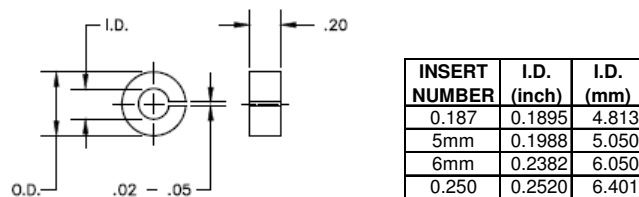


Figure 2: Insert Bushing (Dimensions in inch [mm])

# R-Flex™ Multipurpose Coupling System

---

## ORDERING INFORMATION

---

The R-Flex™ system includes the coupling adapter, four (4) insert bushings and two (2) clamping screws.

Part Number: 66530072-000

NORTH AMERICA	EUROPE	ASIA
Measurement Specialties, Inc. 1000 Lucas Way Hampton, VA 23666 United States Phone: +1-800-745-8008 Fax: +1-757-766-4297 Email: <a href="mailto:sales@meas-spec.com">sales@meas-spec.com</a> Web: <a href="http://www.meas-spec.com">www.meas-spec.com</a>	MEAS Deutschland GmbH Hauert 13 D-44227 Dortmund Germany Phone: +49-(0)231-9740-0 Fax: +49-(0)231-9740-20 Email: <a href="mailto:info.de@meas-spec.com">info.de@meas-spec.com</a> Web: <a href="http://www.meas-spec.com">www.meas-spec.com</a>	Measurement Specialties China Ltd. No. 26, Langshan Road High-tech Park (North) Nanshan District, Shenzhen 518057 China Phone: +86-755-33305088 Fax: +86-755-33305099 Email: <a href="mailto:info.cn@meas-spec.com">info.cn@meas-spec.com</a> Web: <a href="http://www.meas-spec.com">www.meas-spec.com</a>

The information in this sheet has been carefully reviewed and is believed to be accurate; however, no responsibility is assumed for inaccuracies. Furthermore, this information does not convey to the purchaser of such devices any license under the patent rights to the manufacturer. Measurement Specialties, Inc. reserves the right to make changes without further notice to any product herein. Measurement Specialties, Inc. makes no warranty, representation or guarantee regarding the suitability of its product for any particular purpose, nor does Measurement Specialties, Inc. assume any liability arising out of the application or use of any product or circuit and specifically disclaims any and all liability, including without limitation consequential or incidental damages. Typical parameters can and do vary in different applications. All operating parameters must be validated for each customer application by customer's technical experts. Measurement Specialties, Inc. does not convey any license under its patent rights nor the rights of others.