

1

2

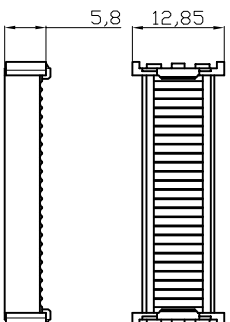
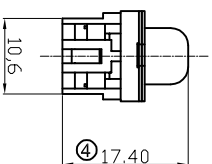
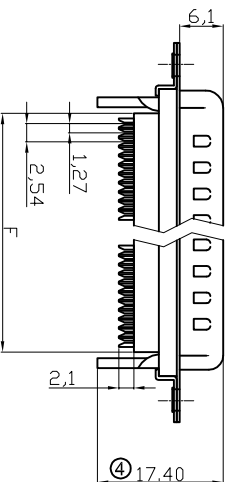
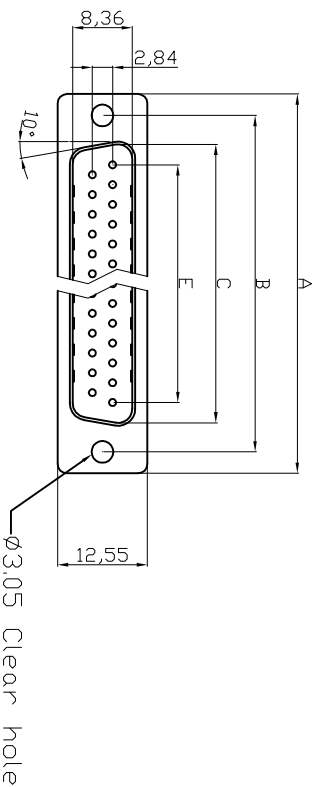
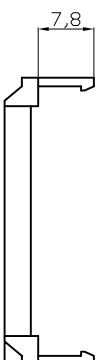
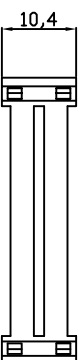
3

4

5

6

7

Male**Cover****Strain Relief****Without Insulator Support**

Dimensions	A	B	C	E	F
Positions					
9	30.81	24.99	16.92	11.08	13.10
15	39.20	33.30	25.25	19.39	20.70
25	53.04	47.04	38.96	33.24	33.68
37	69.40	63.50	55.42	49.86	50.30

RoHS compliant

Unit:mm

G

Scale	Free	⑤	Correct the UL-File number	03.04.2014	Winnie	Customer-No.
TOLERANCE						ASSMANN WSW-No.
X.	±0.38	④	Update 17.58&17.28 into 17.40&17.10mm	07.03.2014	Winnie	A-DXF xx LP111/Z
X.X	±0.25	③	Update the wire specification	28.06.2013	Winnie	
X.XX	±0.13	②	Add the wire specification	06.03.2013	Winnie	
DIM	TOL	①	Add the UL file No.	18.10.2012	Winnie	
X.°	±3°					
X.X°	±1.0°	①	Drawn	15.08.2012	Lucas	
Angle	TOL	Id.	Modification	Date	Name	Customer-No.

H

Scale	Free	⑤	Correct the UL-File number	03.04.2014	Winnie	Customer-No.
TOLERANCE						ASSMANN WSW-No.
X.	±0.38	④	Update 17.58&17.28 into 17.40&17.10mm	07.03.2014	Winnie	A-DXF xx LP111/Z
X.X	±0.25	③	Update the wire specification	28.06.2013	Winnie	
X.XX	±0.13	②	Add the wire specification	06.03.2013	Winnie	
DIM	TOL	①	Add the UL file No.	18.10.2012	Winnie	
X.°	±3°					
X.X°	±1.0°	①	Drawn	15.08.2012	Lucas	
Angle	TOL	Id.	Modification	Date	Name	Customer-No.

H

Scale	Free	⑤	Correct the UL-File number	03.04.2014	Winnie	Customer-No.
TOLERANCE						ASSMANN WSW-No.
X.	±0.38	④	Update 17.58&17.28 into 17.40&17.10mm	07.03.2014	Winnie	A-DXF xx LP111/Z
X.X	±0.25	③	Update the wire specification	28.06.2013	Winnie	
X.XX	±0.13	②	Add the wire specification	06.03.2013	Winnie	
DIM	TOL	①	Add the UL file No.	18.10.2012	Winnie	
X.°	±3°					
X.X°	±1.0°	①	Drawn	15.08.2012	Lucas	
Angle	TOL	Id.	Modification	Date	Name	Customer-No.

H

Scale	Free	⑤	Correct the UL-File number	03.04.2014	Winnie	Customer-No.
TOLERANCE						ASSMANN WSW-No.
X.	±0.38	④	Update 17.58&17.28 into 17.40&17.10mm	07.03.2014	Winnie	A-DXF xx LP111/Z
X.X	±0.25	③	Update the wire specification	28.06.2013	Winnie	
X.XX	±0.13	②	Add the wire specification	06.03.2013	Winnie	
DIM	TOL	①	Add the UL file No.	18.10.2012	Winnie	
X.°	±3°					
X.X°	±1.0°	①	Drawn	15.08.2012	Lucas	
Angle	TOL	Id.	Modification	Date	Name	Customer-No.

H

Scale	Free	⑤	Correct the UL-File number	03.04.2014	Winnie	Customer-No.
TOLERANCE						ASSMANN WSW-No.
X.	±0.38	④	Update 17.58&17.28 into 17.40&17.10mm	07.03.2014	Winnie	A-DXF xx LP111/Z
X.X	±0.25	③	Update the wire specification	28.06.2013	Winnie	
X.XX	±0.13	②	Add the wire specification	06.03.2013	Winnie	
DIM	TOL	①	Add the UL file No.	18.10.2012	Winnie	
X.°	±3°					
X.X°	±1.0°	①	Drawn	15.08.2012	Lucas	
Angle	TOL	Id.	Modification	Date	Name	Customer-No.

1

2

3

4

5

6

7

Product Specification

Material

Insulator : Glass-Filled Thermoplastic PBT, UL94V-0,Black
 Contact : Copper alloy, plating gold flash selective gold
 Shell : Steel, 100µ" Tin Over 50µ" min Copper

Electrical

- ① Contact Resistance : 20 milliohms Max at 1 AMP DC.
- ② Insulation Resistance : 1000 megohms at 500 VDC.
- ③ Dielectric Withstanding Voltage : 1000 VAC/rms 60Hz for 1 minute
- ④ Current Rating : 3 AMP
- ⑤ Voltage Rating : 250 VAC/rms 60Hz
- ⑥ Wire Spec : 26 AWG-28 AWG
- ⑦ Operating Temperature: -20°C--85°C
- ⑧ UL E No #E198287

Order Code: A-DXF xx LP111/Z

Contact style: F - Female
 S - Male
 No. of Contacts: 09 / 15 / 25 / 37
 Standard: Quality class III

ASSMANN
 WSW/ components

Drawing-No.

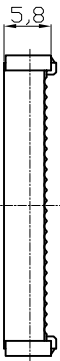
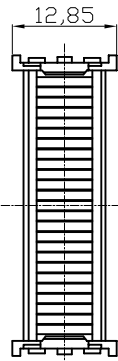
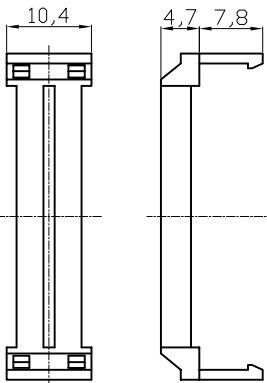
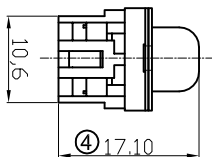
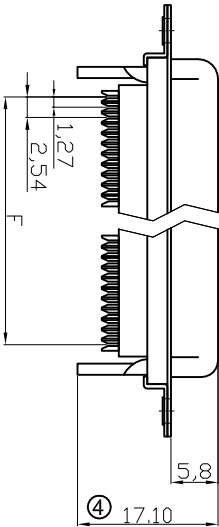
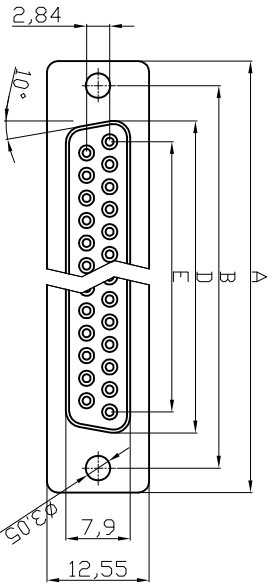
ASS 4891 CO

rev05

Replace

Sheet 1/2

Female



- NOTES:**
- MATERIAL**
1. Insulator Material: Glass-Filled Thermoplastic: PBT, UL 94V-0
 2. Contact Material: Copper alloy
 3. Shell :SPCC
 4. Plating :selective Gold Flash
- ELECTRICAL**
1. Current Rating : 3 AMP
 2. Voltage Rating : 250 V AC/rms 60 Hz
 3. Contact Resistance: 20mΩ max at 1 AMP DC
 4. Insulation Resistance: 1000MΩ at 500 VDC
 5. Withstand Voltage : 1000V AC/rms 60Hz for 1 minute
 6. Wire Spec : 26 AWG-28 AWG
 7. Operating temperature: 20 °C+85°C
- ⑤ UL E No #E198287

Dimensions	A	B	D	E	F
Positions					
9	30,81	24,99	16,33	11,08	10,16
15	39,20	33,30	24,70	19,39	17,78
25	53,05	47,04	38,40	33,24	30,48
37	69,40	63,50	54,80	49,86	45,72

ROHS compliant
Unit: mm

Scale	Free	⑤	Correct the UL-File number	03.04.2014	Winnie	Date	Name
TOLERANCE		④	Update 17.588;17.28 into 17.40&17.10mm	07.03.2014	Winnie	15.08.2012	Lucas
X.	±0.38	③	Update the wire specification	28.06.2013	Winnie	03.04.2014	Winnie
X.X	±0.25	②	Add the wire specification	06.03.2013	Winnie		
X.XX	±0.13	①	Add the UL file No.	18.10.2012	Winnie		
DIM	TOL	①					
X.°	±3°						
X.X°	±1.0°	①	Drawn	15.08.2012	Lucas		
Angle	TOL		Modification	Date	Name		

ASSMANN
WWSW components

Customer-No.
ASSMANN WSW-No.
A-DXF xx LP111/Z
Drawing-No.
ASS 4891 CO
Replace

rev05

Sheet 2/2

1

2

3

4

5

6

7

1

2

3

4

5

6

7

A

A

B

B

C

C

D

D

E

E

F

F

H

H

G