

1

2

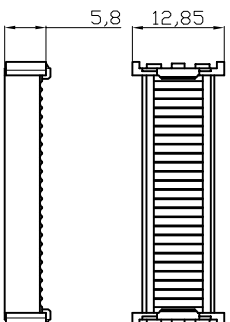
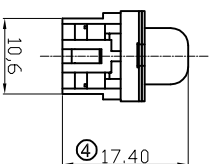
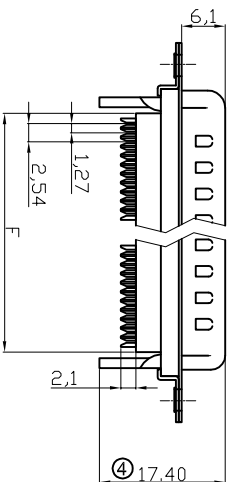
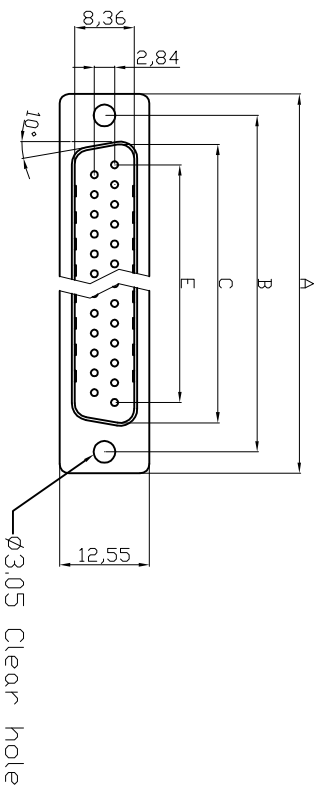
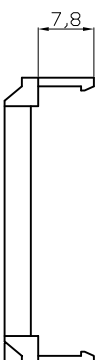
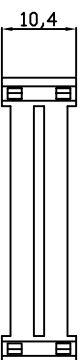
3

4

5

6

7

**Male****Cover****Strain Relief**

Dimensions

Positions	A	B	C	E	F
9	30.81	24.99	16.92	11.08	13.10
15	39.20	33.30	25.25	19.39	20.70
25	53.04	47.04	38.96	33.24	33.68
37	69.40	63.50	55.42	49.86	50.30

**Without Insulator Support****RoHS compliant**

Unit:mm

Product Specification

Material

Insulator : Glass-Filled Thermoplastic PBT, UL94V-0,Black  
 Contact : Copper alloy, plating gold flash selective gold  
 Shell : Steel, 100U" Tin Over 50U" min Copper

Electrical

- ⑤ Contact Resistance : 20 milliohms Max at 1 AMP DC.
- Insulation Resistance : 1000 megohms at 500 VDC.
- Dielectric Withstanding Voltage : 1000 VAC/rms 60Hz for 1 minute
- ③ Current Rating : 3 AMP
- Voltage Rating : 250 VAC/rms 60Hz
- ③ Wire Spec : 26 AWG-28 AWG
- Operating Temperature: -20°C--85°C
- ⑤ UL E No #E198287

Order Code: A-DXF xx LP111Z

Contact style:  No. of Contacts  
 F - Female 09 / 15 / 25 / 37  
 S - Male Standard: Quality class III

1

2

3

4

5

6

7

Scale	Free	⑤	Correct the UL-File number	03.04.2014	Winnie	Customer-No.
TOLERANCE		④	Update 17.58&17.28 into 17.40&17.10mm	07.03.2014	Winnie	ASSMANN WSW-No.
X.	±0.38	③	Update the wire specification	28.06.2013	Winnie	A-DXF xx LP111Z
X.X	±0.25	②	Add the wire specification	06.03.2013	Winnie	
X.XX	±0.13	①	Add the UL file No.	18.10.2012	Winnie	
DIM	TOL	①	Drawn	15.08.2012	Lucas	Drawing-No.
X.°	±3°	①				ASS 4891 CO
X.X°	±1.0°	①				rev05
Angle	TOL	Id.	Modification	Date	Name	Replace

**ASSMANN**  
 WSW components

ASS 4891 CO

rev05

Sheet 1/2

1

2

3

4

5

6

7

1

2

3

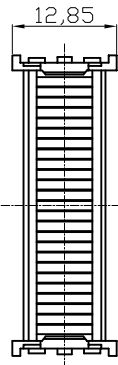
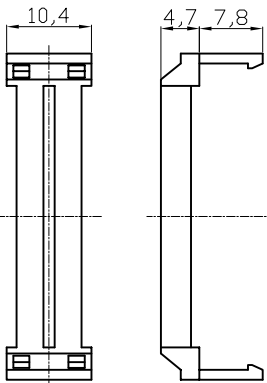
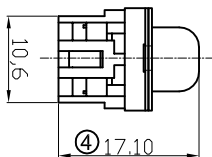
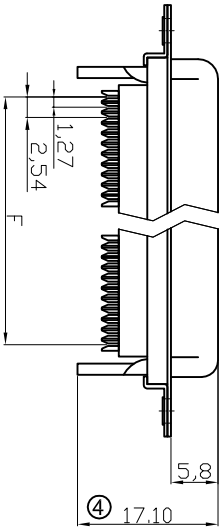
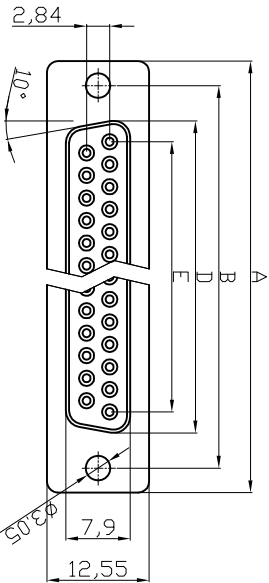
4

5

6

7

**Female**



- NOTES:**
- MATERIAL**
1. Insulator Material: Glass-Filled Thermoplastic: PBT/UL 94V-0
  2. Contact Material: Copper alloy
  3. Shell :SPCC
  4. Plating :selective Gold Flash
- ELECTRICAL**
1. Current Rating : 3 AMP
  2. Voltage Rating : 250 V AC/rms 60 Hz
  3. Contact Resistance: 20mΩ max at 1 AMP DC
  4. Insulation Resistance: 1000MΩ at 500 VDC
  5. Withstand Voltage : 1000V AC/rms 60Hz for 1 minute
  6. Wire Spec : 26 AWG-28 AWG
  7. Operating temperature: 20 °C+85°C
- ⑤ UL E No #E198287

Dimensions	A	B	D	E	F
Positions					
9	30,81	24,99	16,33	11,08	10,16
15	39,20	33,30	24,70	19,39	17,78
25	53,05	47,04	38,40	33,24	30,48
37	69,40	63,50	54,80	49,86	45,72

**ROHS compliant**

Unit: mm

Scale	Free	⑤	Correct the UL-File number	03.04.2014	Winnie	Date	Name
<b>TOLERANCE</b>		④	Update 17.588;17.28 into 17.40&17.10mm	07.03.2014	Winnie	15.08.2012	Lucas
X.	±0.38	③	Update the wire specification	28.06.2013	Winnie	03.04.2014	Winnie
X.X	±0.25	②	Add the wire specification	06.03.2013	Winnie		
X.XX	±0.13	①	Add the UL file No.	18.10.2012	Winnie		
DIM	TOL	①					
X.°	±3°						
X.X°	±1.0°	①	Drawn	15.08.2012	Lucas		
Angle	TOL		Modification	Date	Name		

**ASSMANN**  
WWSW components

Customer-No.  
ASSMANN WSW-No.  
**A-DXF xx LP111/Z**  
Drawing-No.  
**ASS 4891 CO**  
Replace

rev05

Sheet  
2/2