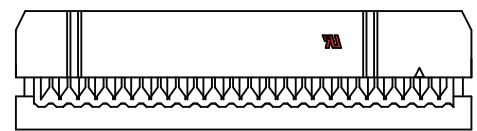
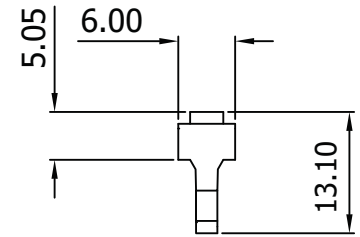
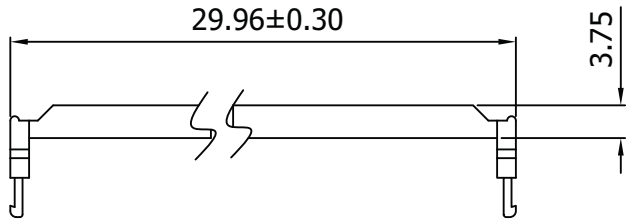


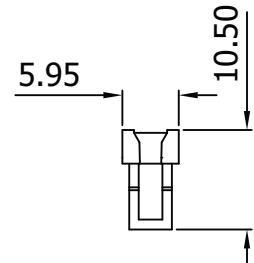
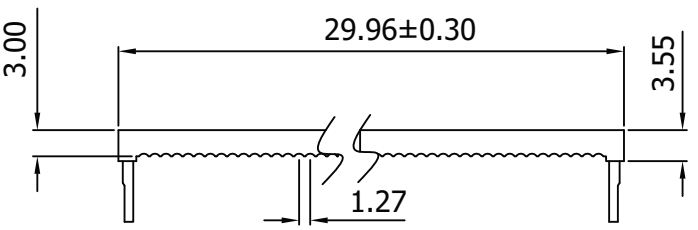
1 2 3 4 5 6 7

A



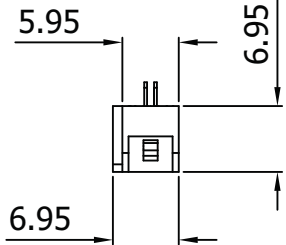
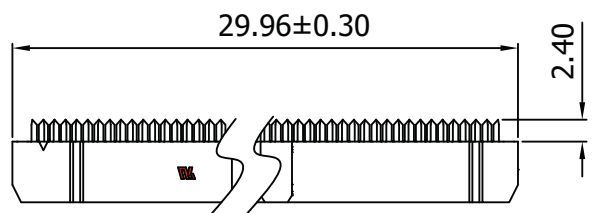
A

B



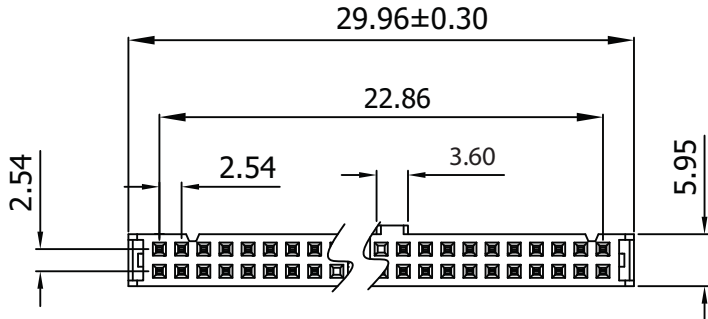
B

C



C

D



Material:

- Insulator: P.B.T. 30% Glass Fiber, UL 94V-0
- Contact Material: Phosphor Bronze, Gold flash over Nickel

Electrical:

- Current Rating: 1Amp
- Insulation Resistance: 1,000MΩ Min.
- Contact Resistance: 30MΩ Max.
- Dielectric Withstanding: 500V AC
- Operating Temperature: -40°C ~ +85°C

Unit: MM±0.20MM

G

Scale	1:1					Name
TOLERANCE					Drawn	10.19.11 Chappell
X.X	±0.40				Approved	
X.XX	±0.25					
X.XXX	±0.15					
Angle	±3°					

Item No.	
AWP20-7241-T-R	
Title IDC-Socket - 2.54MM Pitch, Gold Flash, Central Lug w/Strain Relief, 20 Contacts	
Drawing No.	rev00
Replace	Sheet



H

H

1 2 3 4 5 6 7