

1 2 3 4 5 6 7

A

A xx-LC-TT

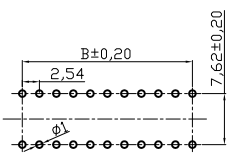
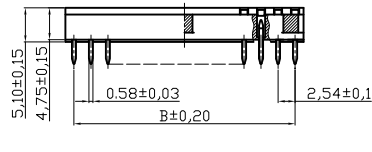
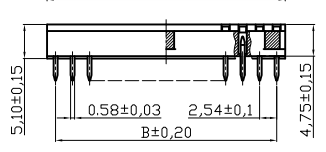
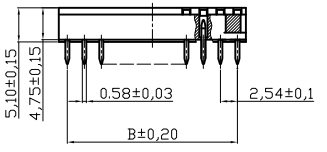
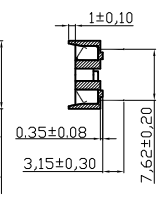
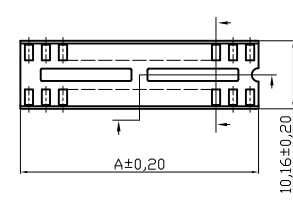
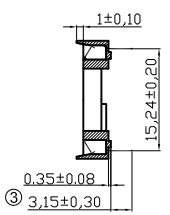
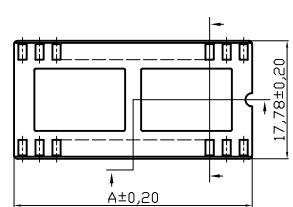
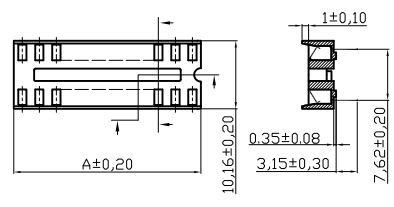
A xx-LC/7-T

A

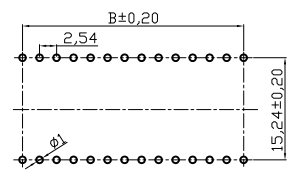
CKT: 06, 08, 14, 16, 18, 20

CKT: 24, 28, 32, 40

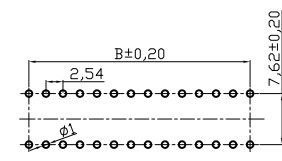
CKT: 24, 28



PCB LAYOUT



PCB LAYOUT



PCB LAYOUT

MATERIAL:
 Contact :
 Phosphor Bronze thickness 0.15mm
 Plating :
 Contact Plating, Tin plated 60u"~80u"
 (Lead free plating)
 Insulator : PBT-4830 , UL 94V-0

SPECIFICATIONS:
 Current Rating : 1A
 Dielectric withstanding Voltage : 1000v RMS/minute
 Insulator resistance : 5000 Megohms min.
 Contact resistance : 20 milliohms initial
 30 milliohms after test.
 Operating temperatures : -55°c to 85°c
 Insertion force : 340g(12 oz) max.per contact.
 Withdrawal force : 80g(2.82 oz) min.per contact

CKT	A±0.20	B±0.20
06	7.62	5.08
08	10.16	7.62
14	17.78	15.24
16	20.32	17.78
18	22.86	20.32
20	25.40	22.86

CKT	A±0.20	B±0.20
24	30.48	27.94
28	35.56	33.02
32	40.64	38.10
40	50.80	48.26

CKT	A±0.20	B±0.20
24	30.48	27.94
28	35.56	33.02

E

E

F

F

RoHS compliant

Scale	1:1	Date	24.03.1999	Name	Hellwig	Customer-No.	
TOLERANCE		Drawn	24.03.1999	Name	Hellwig	ASSMANN WSW-No.	A xx-LC-TT A xx-LC/7-T
X.	±X	Approved	05.11.2009	Name	Hellwig	Drawing-No.	ASS 0810 CO
X.X	±X					rev	03
X.XX	±X	③	Correct dimensions	05.11.2009	Dean	Replace	ASS 0333A CO ASS 0333B CO
DIM	TOL	②	Update	21.07.2009	Dean	Sheet	
X.°	±X°	①	Drawn	24.03.1999	Hellwig		
X.X°	±X°						
Angle	TOL	Id.	Modification	Date	Name		



1 2 3 4 5 6 7

H

H