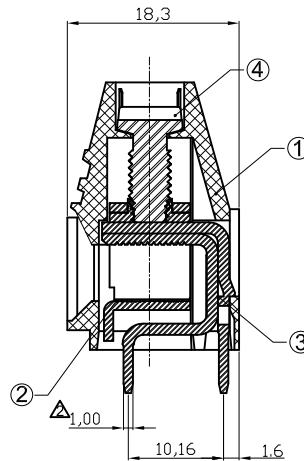
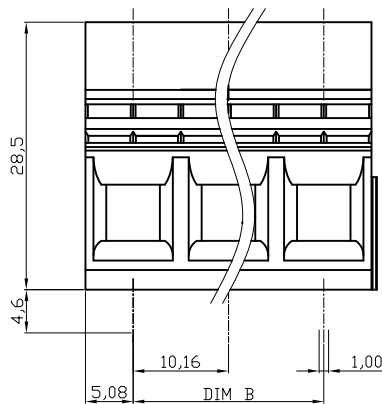


Recommended PCB Layout



**NOTES:**

**MATERIAL**

- 1.Item ① Insulator (housing):Thermoplastic (UL 94V-0),Grey
- 2.Item ② Metal housing:Steel stamping
- 3.Item ③ Contacts : Brass
- 4.Item ④ Terminal screw:Steel Zinc plating"-slot type

**ELECTRICAL**

- 1.Current Rating : 57A
- 2.Voltage Rating : 300V
- 3.Wire range:
- 4.Solid wire(AWG):8-22
- 5.Stranded wire(AWG):8-22
- 6.Torque(Lb-In):19
- 7.Screw:M4.5
- 8.Wire strip length:10-11mm
- 9.Withstanding Voltage:1.6KV

**ENVIRONMENTAL**

- 1.Soldering Temperature: 250°C ±10°C/5 Sec  $\Delta$
- 2.Operating Temperature: -40°C to +115°C
- 3.Safety approval: cULus

Poles	02	03	04	05	06	07	08	09	10	11	12
Dim L	20.32	30.48	40.64	50.80	60.96	71.12	81.28	91.44	101.60	111.76	121.92
Dim B	10.16	20.32	30.48	40.64	50.80	60.96	71.12	81.28	91.44	101.60	111.76
TOL	±0.15						±0.20				

**RoHS compliant**

Scale	1:1	Date	20.03.2007	Name	Hellwig	Customer-No.		
TOLERANCE		Drawn	20.03.2007	Hellwig		ASSMANN WSW-No.	A-TB116-VPXX	
X.	±0.50	Approved	19.03.2009	Hellwig		Drawing-No.	ASS 2179 CO	
X.X	±0.30					Replace	Sheet	
X.XX	±0.10							
DIM	TOL	②	Change dimension from 1.90 to 1.70 $\Delta$ Change dimension 1.20 to 1.00 $\Delta$ Modify Operating temperature $\Delta$	19.03.2009	Dean			
X.°	±1°	①	Drawn	20.03.2007	Hellwig			
Angle	TOL	Id.	Modification	Date	Name			