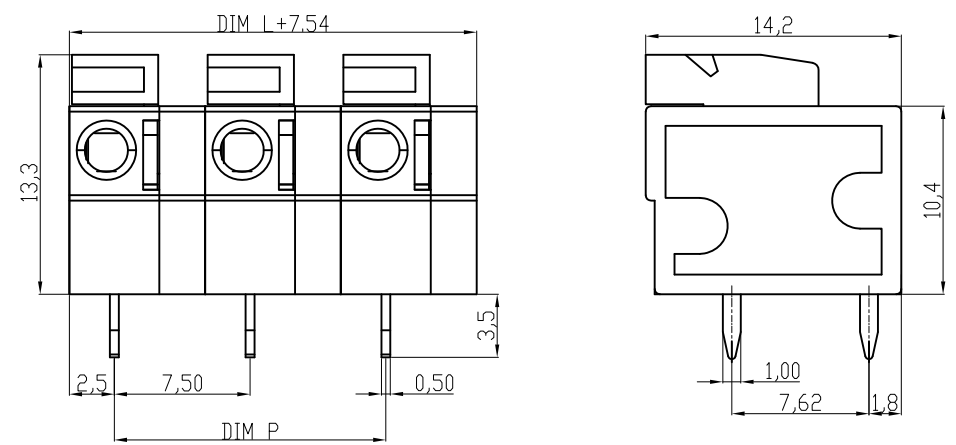
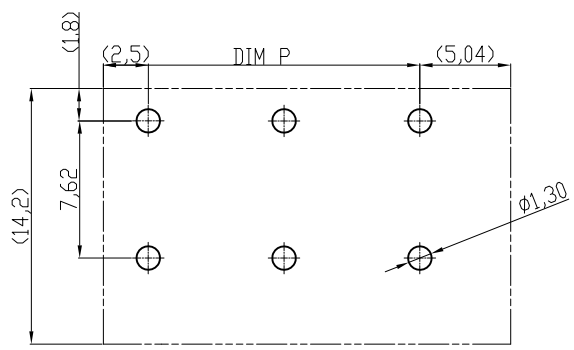


A  
B  
C  
D  
E  
F  
G  
H

Material  
 ①Terminal body(Contact pin):Brass  
 ②Wire guard: Stainless steel  
 ③Surface of solder tail: Tin plated  
 ④Insulator(housing): Thermoplastic (UL94V-0) , GREEN



Electrical cULus/VDE  
 Voltage rating: 300VAC/450VAC  
 Current rating: 10A/10A  
 Wire range:0.75-1.5mm<sup>2</sup>  
 Solid wire(AWG): 14-24  
 Stranded wire(AWG): 14-24  
 Pull force:  
 Screw:  
 Wire strip length: 9-10mm  
 Withstanding Voltage: 1.6KV/2.5KV  
 Operating temperature: -40°C to +115°C  
 Soldering temperature: 250°C±10°C/5 Sec  
 Safety Approval: cULus VDE



RECOMMENDER PCB LAYOUT

DIMENSION

L	Nx7.5
P	(N-1)x7.5

N=Number of poles

Poles	Tolerance	
	DIM L	DIM P
2p-6p	±0.15	±0.10
7p-12p	±0.20	±0.20

RoHS compliant

Scale	1:1						Date	Name	Customer-No.
TOLERANCE							Drawn	19.04.2010	Alex
X.	±0.50						Approved	19.04.2010	Hellwig
X.X	±0.30								
X.XX	±0.10								
DIM	TOL								Drawing-No.
X.°	±1°								ASS 4126 CO
		©	Drawn	19.04.2010	Alex				rev00
Angle	TOL	Id.	Modification	Date	Name			Replace	Sheet

ASSMANN WSW-NO.  
**A-TB750-HAxxH**  
 Drawing-No.  
**ASS 4126 CO** rev00  
 Sheet