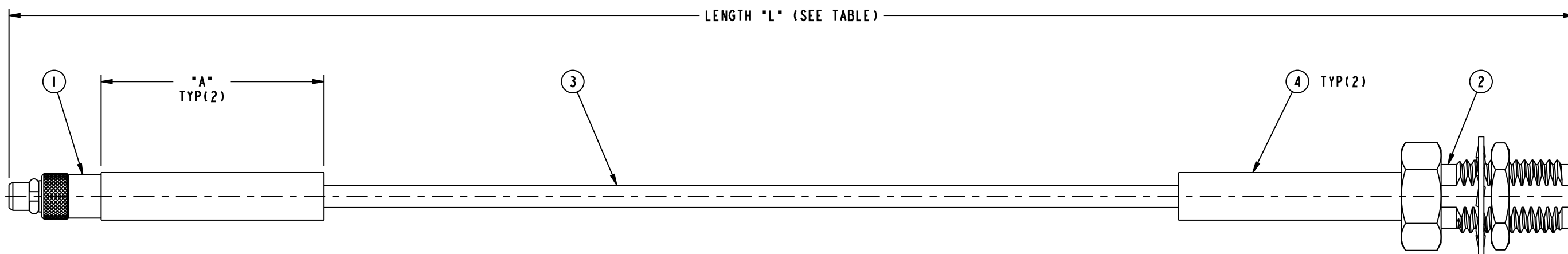
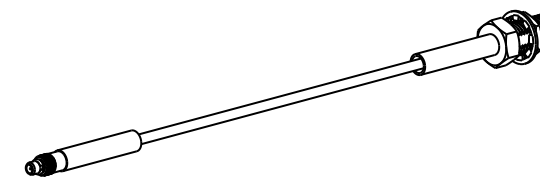


NOTES:

1. PACKAGE INDIVIDUALLY IN HEAT SEALED BAG. TAG IN BAG WITH "AMPHENOL CONNEX, 245107-02-XX.XX AND DATE CODE".
2. CABLE ASSEMBLY TO BE 100% TESTED FOR HI-POT, CONTINUITY, SHORTS AND OPEN.

245107-02-XX.XX		REVISIONS			
DRAWING NO.	REV	DESCRIPTION	DATE	ECO	APPR
THIRD ANGLE PROJ.	A	RELEASE TO MFG.	02-Aug-10	--	CL



PART NUMBER	LENGTH (IN.)	DIMENSION A (IN.)
245107-02-06.00	06.000±0.150	0.750
245107-02-12.00	12.000±0.150	0.750
245107-02-18.00	18.000±0.150	0.750
245107-02-24.00	24.000±0.250	2.000

\* ADDITIONAL LENGTHS CAN BE PROVIDED BY CHANGING XX.XX TO DESIRED LEGNTH IN INCHES CONTACT CONNEX MARKETING FOR QUOTE

DESIGN REQUIREMENTS:

- FREQUENCY ..... TO ..... GHz     CONTINUITY  
 VSWR ..... : 1 MAX                     HI-POT : 500 VRMS  
 INS. LOSS ..... dB MAX                 OTHER

PART NUMBER	QTY	ITEM	DESCRIPTION	FINISH
009-954-341	A/R	4	HEAT SHRINK TUBE	
009-881-159	A/R	3	RG-174 CABLE	
132119	1	2	SMA BLKHD CRIMP JACK	
262101	1	1	MMCX CRIMP PLUG	

UNLESS OTHERWISE SPECIFIED, DIMENSIONS ARE IN INCHES AND TOLERANCES ARE: 2 PLACE DECIMAL    3 PLACE DECIMAL    ANGLES ±.015 (0,381 mm)    ±.005 (0,127 mm)    ± 1°	MATERIAL	DRAWN CLEMENT	DATE 02-Aug-10	TITLE MMCX CRIMP PLUG TO SMA BLKHD CRIMP JACK, USING, RG-174 CABLE, XX.XX" LENGTH	Amphenol Connex
	REFERENCE	ENGINEER CLEMENT	DATE 02-Aug-10		
NOTICE - These drawings, specifications, or other data (1) are, and remain the property of Amphenol Corp. (2) must be returned upon request; and (3) are confidential and not to be disclosed to any person other than those to whom they are given by Amphenol Corp. The furnishing of these drawings, specifications, or other data by Amphenol Corp., or to any other person to anyone for any purpose is not to be regarded by implication or otherwise in any manner licensing, granting rights or permitting such holder or any other person to manufacture, use or sell any product, process or design, patented or otherwise, that may in any way be related to or disclosed by said drawings, specifications, or other data.		APPROVED	DATE		SCALE: 2.7:1
		CAD FILE Root folder:/Cable assembly/ 245107-02-XX.XX	DWG SIZE B	DRAWING NO. 245107-02-XX.XX	REV A