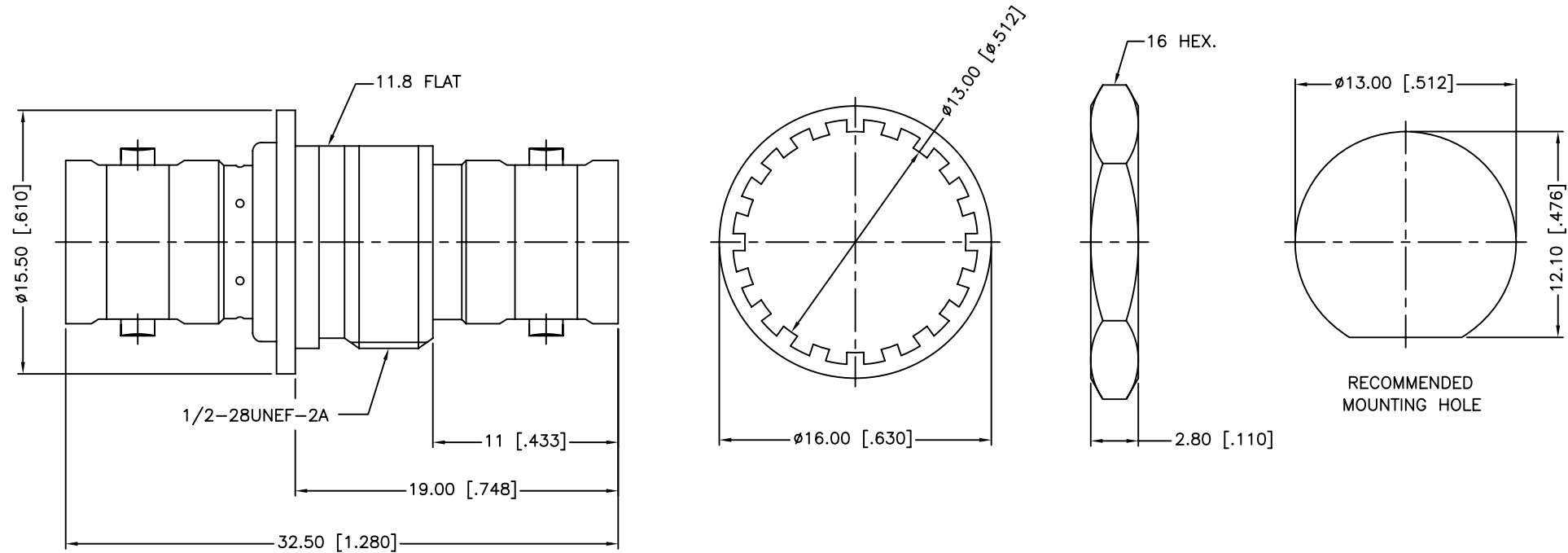


REV.	DATE	ECR NO.	DESCRIPTION
A	01/07/04	XXXXXX	UPDATE DRAWING FORMAT
B	06/22/11	2186	ADD NOTE 1, 2, 3



1. IMPEDANCE: 75 OHMS
2. FREQUENCY RANGE: 0-1 GHz
3. MAX. PANEL THICKNESS: 4.5MM

UNLESS OTHERWISE SPECIFIED DIMENSIONS ARE IN MILLIMETERS. DIMENSIONS IN [] ARE IN INCHES AND FOR CUSTOMER REFERENCE ONLY.				APPROVALS	DATE	<h1 style="color: blue; text-align: center;">Amphenol Connex</h1>						
5	HEX NUT	BRASS	NICKEL	1	DRAWN		M.ZHANG	06/22/11				
4	LOCK WASHER	BRASS	NICKEL	1	CHECKED							
3	CONTACT PIN	PHOSPHOR BRONZE	GOLD	1	ISSUED							
2	INSULATOR	DELIN	NATURAL	1	SHEET	1 OF 1						
1	BODY	BRASS	NICKEL	1	CAD FILE	C:/CONNEX/112440.DWG						
UNLESS OTHERWISE SPECIFIED TOLERANCES FOR MILLIMETERS ARE: 0.5 - 8mm ± 0.20 mm 8 - 30mm ± 0.40 mm 30 - 120mm ± 0.50 mm UNLESS OTHERWISE SPECIFIED TOLERANCES FOR INCHES ARE: .020 - .315 = ± 0.007 " .315 - 1.180 = ± 0.015 " 1.180 - 4.724 = ± 0.020 "				DO NOT SCALE DRAWING		PART DESCRIPTION BNC FEMALE TO FEMALE BULKHEAD ISOLATED ADAPTOR - 75 OHM						
DESCRIPTION				MATERIAL		FINISH		QTY	PART NO. 112440			
				DWG. NO.		112440.DWG	REV.	B	SIZE	A	SCALE	NA