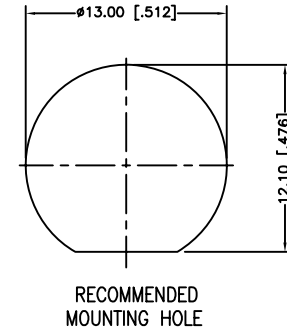
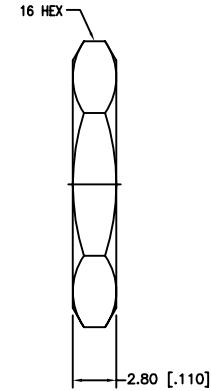
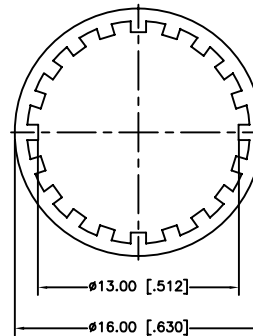
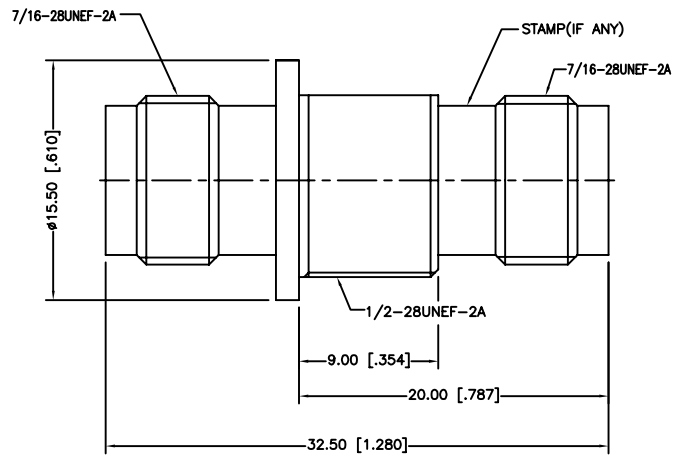


REV.	DATE	ECR NO.	DESCRIPTION
NC	07/08/10	XXXXXX	INITIAL RELEASE



1. FREQUENCY RANGE: 0 - 11 GHz
2. IMPEDANCE: 50 OHM

DESCRIPTION	MATERIAL	FINISH	QTY	
6	HEX NUT	BRASS	NICKEL	1
5	LOCK WASHER	BRASS	NICKEL	1
4	CONTACT PIN	PHOSPHOR BRONZE	GOLD	1
3	INSULATOR	DELTRIN	NATURAL	2
2	BODY	BRASS	NICKEL	2
1	HOUSING	BRASS	NICKEL	1

<small>UNLESS OTHERWISE SPECIFIED DIMENSIONS ARE IN MILLIMETERS. DIMENSIONS IN [ ] ARE IN INCHES AND FOR CUSTOMER REFERENCE ONLY.</small>  <small>UNLESS OTHERWISE SPECIFIED TOLERANCES FOR MILLIMETERS ARE:</small> 0.5 - 8mm ± 0.20mm 8 - 30mm ± 0.40mm 30 - 120mm ± 0.50mm  <small>UNLESS OTHERWISE SPECIFIED TOLERANCES FOR INCHES ARE:</small> .020 - .315 = ± 0.007" .315 - 1.180 = ± 0.015" 1.180 - 4.724 = ± 0.020"  DO NOT SCALE DRAWING	APPROVALS	DATE	
	DRAWN	M.ZHANG	07/08/10
	CHECKED		
	ISSUED		
	SHEET	1 OF 1	
CAD FILE	C:/CONNEX/122344.DWG		

<h1>Amphenol Connex</h1>			
PART DESCRIPTION <b>TNC FEMALE TO FEMALE BULKHEAD ADAPTOR</b>			
PART NO. <b>122344</b>			
DWG. NO.	122344.DWG	REV.	NC
SIZE	A	SCALE	NA