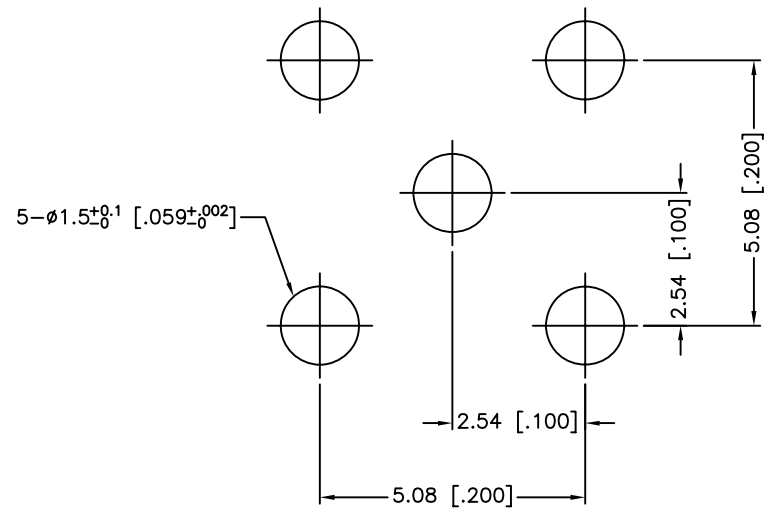
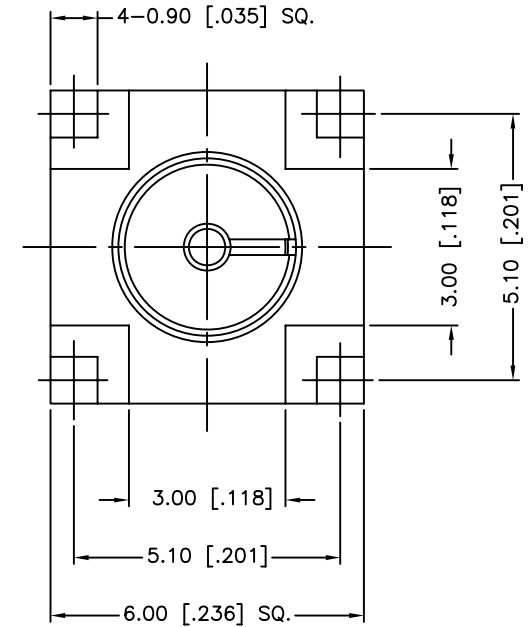
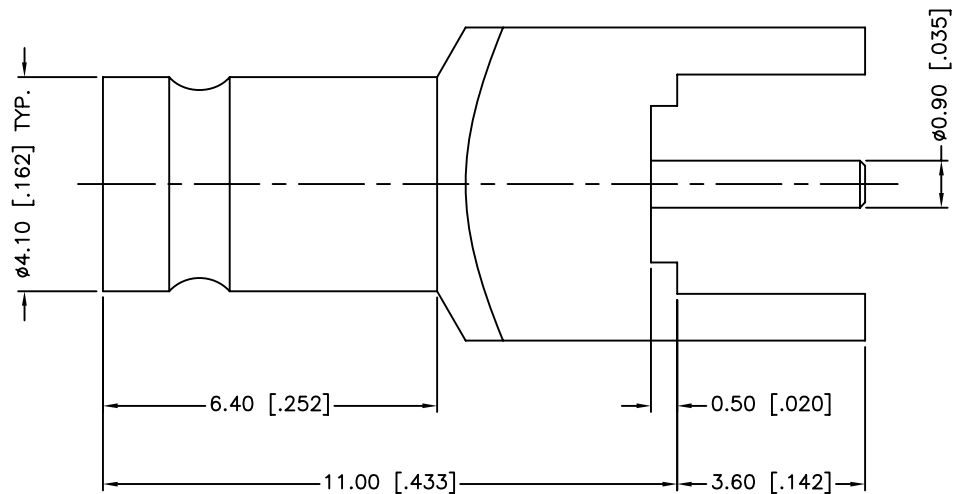


REV.	DATE	ECR NO.	DESCRIPTION
NC	07/17/09	XXXXXX	INITIAL RELEASE



RECOMMENDED MOUNTING HOLE



VSWR (RETURN LOSS): 1.15 MAX. @ 0-3 GHz

UNLESS OTHERWISE SPECIFIED DIMENSIONS ARE IN MILLIMETERS. DIMENSIONS IN [ ] ARE IN INCHES AND FOR CUSTOMER REFERENCE ONLY.

UNLESS OTHERWISE SPECIFIED TOLERANCES FOR MILLIMETERS ARE:  
0.5 - 8mm ± 0.20mm  
8 - 30mm ± 0.40mm  
30 - 120mm ± 0.50mm

UNLESS OTHERWISE SPECIFIED TOLERANCES FOR INCHES ARE:  
.020 - .315 = ± 0.007"  
.315 - 1.180 = ± 0.015"  
1.180 - 4.724 = ± 0.020"

DO NOT SCALE DRAWING

APPROVALS		DATE
DRAWN	M.ZHANG	07/17/09
CHECKED		
ISSUED		
SHEET	1 OF 1	
CAD FILE	C:/CONNEX/282127-75.DWG	

<h1>Amphenol Connex</h1>			
PART DESCRIPTION <b>1.0/2.3 JACK PCB MOUNT (FOR 75 OHM)</b>			
PART NO. <b>282127-75</b>			
DWG. NO.	282127-75.DWG	REV.	NC
SIZE	A	SCALE	NA

QTY	FINISH	MATERIAL	DESCRIPTION
1	GOLD	BRASS	BODY
1	NATURAL	PTFE	INSULATOR
1	GOLD	BER. COPPER	CONTACT PIN