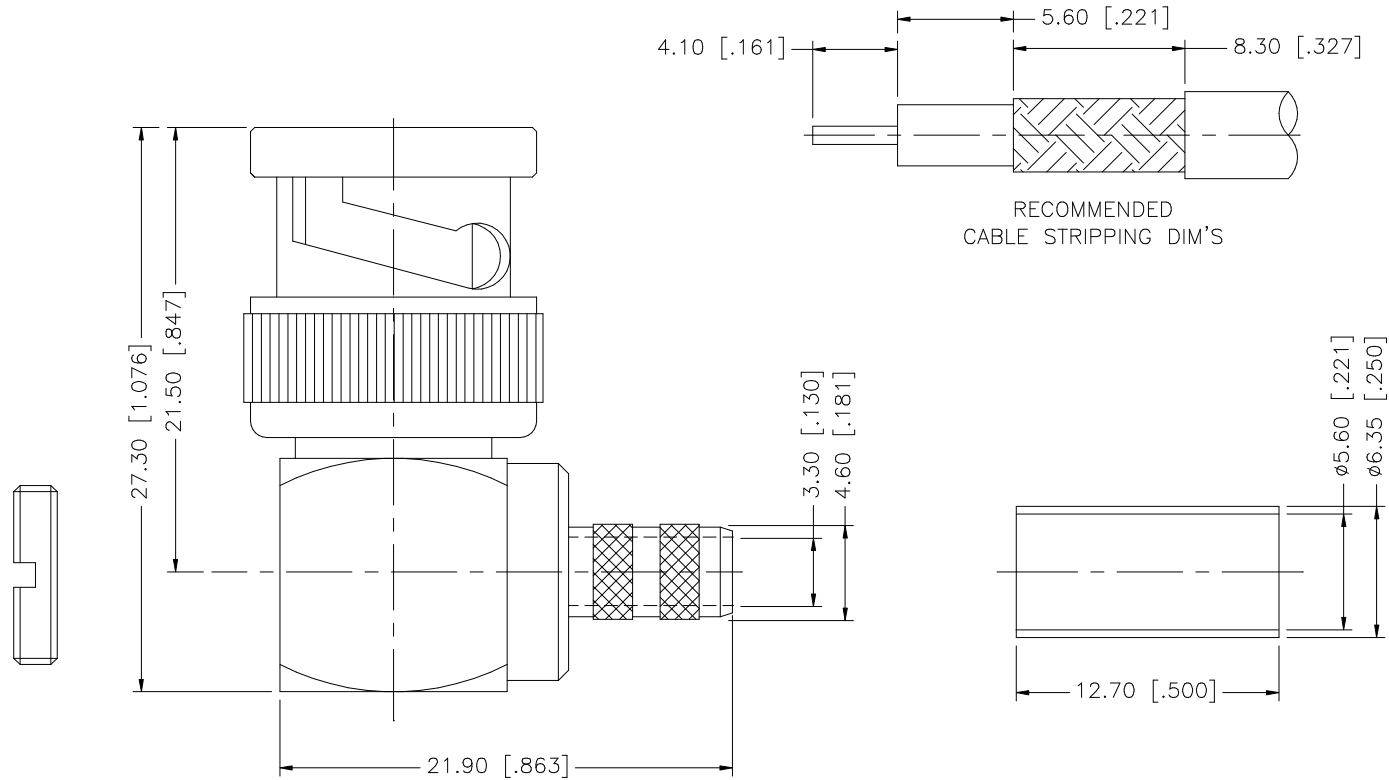


REV.	DATE	DESCRIPTION
NC	08/03/98	INITIAL RELEASE
A	01/30/07	UPDATE DRAWING FORMAT



NOTE:

1. CRIMPED FERRULE HEX CRIMP SIZE .213"

8				<small>UNLESS OTHERWISE SPECIFIED DIMENSIONS ARE IN MILLIMETERS. DIMENSIONS IN [ ] ARE IN INCHES AND FOR CUSTOMER REFERENCE ONLY.</small> <small>UNLESS OTHERWISE SPECIFIED TOLERANCES FOR MILLIMETERS ARE:</small> 0.5 - 8mm ± 0.20mm 8 - 30mm ± 0.40mm 30 - 120mm ± 0.50mm <small>UNLESS OTHERWISE SPECIFIED TOLERANCES FOR INCHES ARE:</small> .020 - .315 = ± 0.007" .315 - 1.180 = ± 0.015" 1.180 - 4.724 = ± 0.020" DO NOT SCALE DRAWING	APPROVALS	DATE	<h1 style="color: blue;">Amphenol Connex</h1>	
7			DRAWN		G.R.S.	01/30/07		PART DESCRIPTION <h2 style="text-align: center;">BNC R/A CRIMP JACK - LMR200</h2>
6			CHECKED					
5	NUT	BRASS	NICKEL		1	ISSUED		PART NO. <h2 style="text-align: center;">112599</h2>
4	FERRULE	COPPER	NICKEL		1	SHEET	1 OF 1	
3	CONTACT PIN	PHOS. BRONZE	GOLD	1	CAD FILE	C:/112/112599.DWG	DWG. NO. 112599.DWG REV. A SIZE A SCALE NA	
2	INSULATOR	TEFLON	NATURAL	1				
1	BODY	BRASS	NICKEL	1				
	DESCRIPTION	MATERIAL	FINISH	QTY				