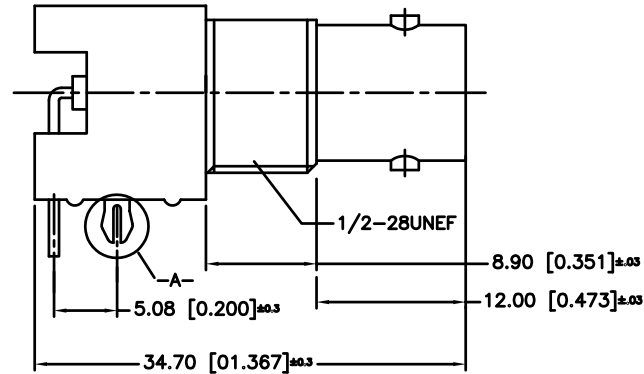
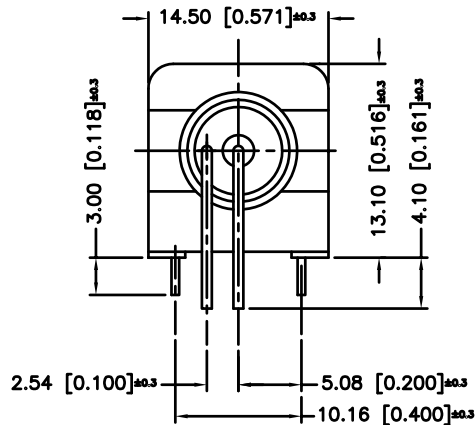
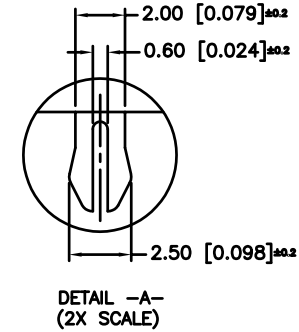
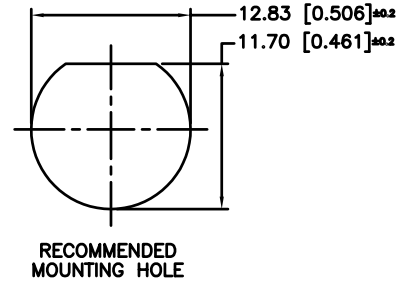
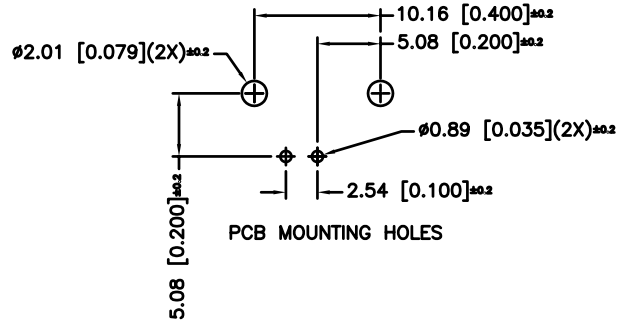


REV.	DATE	ECR.NO	DESCRIPTION
A	02/12/04	---	UPDATE DRAWING FORMAT/ MODIFY BODY
B	07/28/06	---	REVISE BODY HEIGHT TO 13.10
C	06/28/07	---	REVISE BACK HOUSING SHOWING BACK CONTACT PINS CAPTIVATED
D	09/27/10	2012	HARDWARES REMOVED



NOTE:

1. MAX. PANEL THICKNESS = 5mm [0.197]

DESCRIPTION	MATERIAL	FINISH	QTY	UNLESS OTHERWISE SPECIFIED DIMENSIONS ARE IN MILLIMETERS. DIMENSIONS IN [] ARE IN INCHES AND FOR CUSTOMER REFERENCE ONLY.	APPROVALS	DATE	Amphenol Connex							
5	MOUNTING POST	BRASS	TIN PLATE	1	UNLESS OTHERWISE SPECIFIED TOLERANCES FOR MILLIMETERS ARE: 0.5 - 8mm ± 0.20mm 8 - 30mm ± 0.40mm 30 - 120mm ± 0.50mm UNLESS OTHERWISE SPECIFIED TOLERANCES FOR INCHES ARE: .020 - .315 = ± 0.007" .315 - 1.180 = ± 0.015" 1.180 - 4.724 = ± 0.020"	DRAWN	G.R.S.	02/12/04	PART DESCRIPTION BNC R/A PC MOUNT RECEPT. JACK					
4	CONTACT PIN	PHOS. BRONZE	GOLD	1		CHECKED								
3	INSULATOR	P.P.	NATURAL	1		ISSUED								
2	BODY	ZINC DIE CAST	NICKEL	1		SHEET	1 OF 1							
1	HOUSING	P.B.T.	WHITE	1	PART NO. 112419									
				DO NOT SCALE DRAWING	CAD FILE	C:/112/112419.DWG	DWG. NO.	112419.DWG	REV.	D	SIZE	A	SCALE	NA