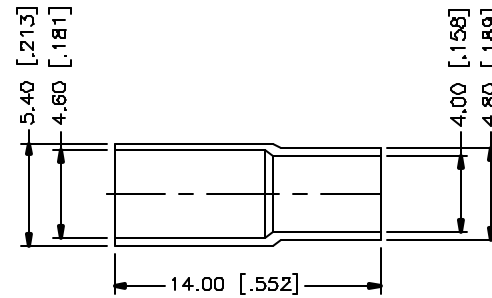
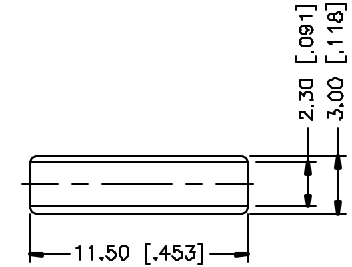
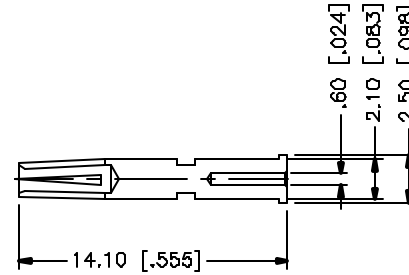
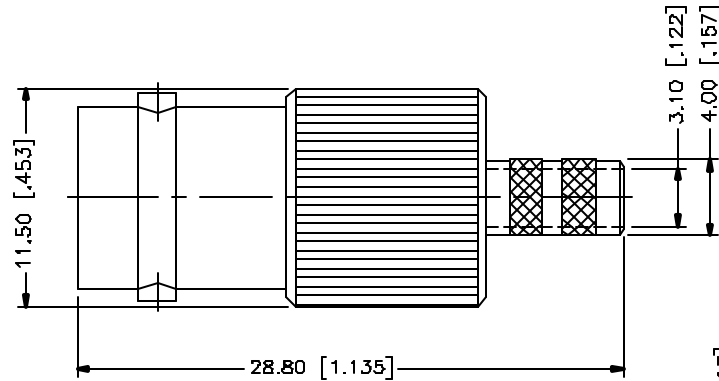
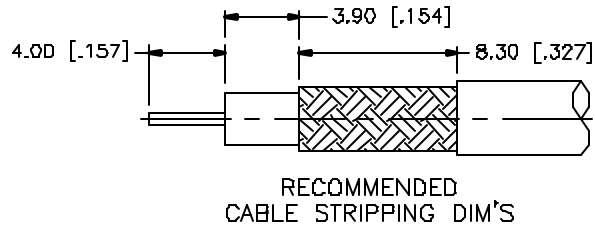


REV.	DATE	DESCRIPTION
NC	03/08/05	UPDATE DRAWING FORMAT



CRIMP NOTES:

1. CRIMPED FERRULE
HEX CRIMP SIZE .187"
2. CRIMPED CONTACT PIN
HEX CRIMP SIZE .068"

REV.	DATE	DESCRIPTION
NC	03/08/05	UPDATE DRAWING FORMAT
8		
7		
6		
5	FERRULE	COPPER
4	SLEEVE	DELFIN
3	INSULATOR	DELFIN
2	CONTACT PIN	PHOS. BRONZE
1	HOUSING/BODY	BRASS
	DESCRIPTION	MATERIAL
		FINISH
		QTY
<p>UNLESS OTHERWISE SPECIFIED DIMENSIONS ARE IN MILLIMETERS. DIMENSIONS IN [] ARE IN INCHES AND FOR CUSTOMER REFERENCE ONLY.</p> <p>UNLESS OTHERWISE SPECIFIED TOLERANCES FOR MILLIMETERS ARE: 0.5 - 8mm ± 0.20mm 8 - 30mm ± 0.40mm 30 - 120mm ± 0.50mm</p> <p>UNLESS OTHERWISE SPECIFIED TOLERANCES FOR INCHES ARE: .020 - .310 = ± 0.007" .315 - 1.180 = ± 0.015" 1.180 - 4.724 = ± 0.020"</p> <p>DO NOT SCALE DRAWING</p>		
<p>APPROVALS</p> <p>DRAWN G.R.S.</p> <p>CHECKED</p> <p>ISSUED</p> <p>SHEET 1 OF 1</p> <p>CAD FILE C:/112/112638.DWG</p>		
<p>DATE</p> <p>03/08/05</p>		
<p>Amphenol Connex</p>		
<p>PART DESCRIPTION</p> <p>BNC CRIMP JACK (FOR B573945, Q841 MINI MAX 500 CABLE)</p>		
<p>PART NO.</p> <p>112638</p>		
<p>DWG. NO. 112638.DWG</p>		
<p>REV. NC</p>		
<p>SIZE A</p>		
<p>SCALE NA</p>		