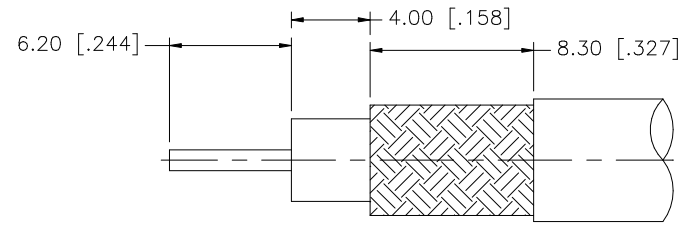
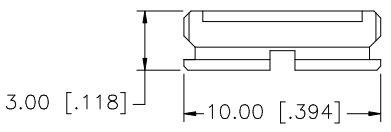
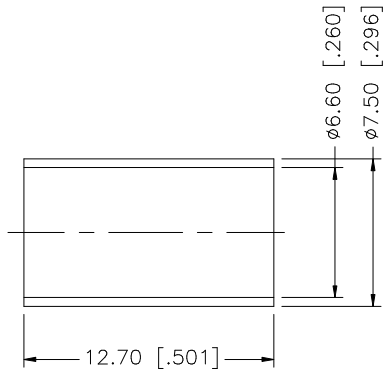
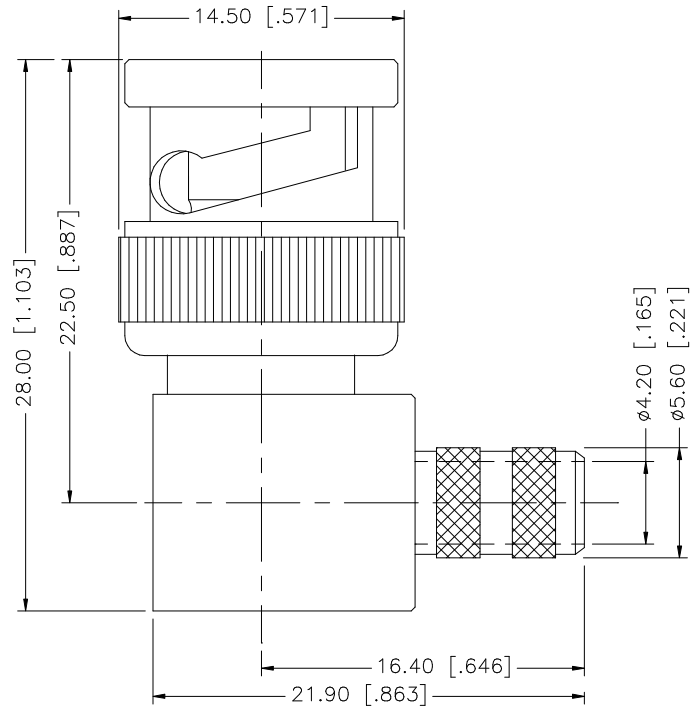


| REV. | DATE | DESCRIPTION |
|------|----------|-----------------------|
| NC | 08/18/98 | INITIAL RELEASE |
| A | 07/25/05 | UPDATE DRAWING FORMAT |



RECOMMENDED
CABLE STRIPPING DIM'S

| | | | | |
|---|-------------|----------|---------|-----|
| 8 | | | | |
| 7 | | | | |
| 6 | | | | |
| 5 | COVER | BRASS | NICKEL | 1 |
| 4 | FERRULE | COPPER | NICKEL | 1 |
| 3 | CONTACT PIN | BRASS | GOLD | 1 |
| 2 | INSULATOR | DELTRIN | NATURAL | 1 |
| 1 | BODY | BRASS | NICKEL | 1 |
| | DESCRIPTION | MATERIAL | FINISH | QTY |

UNLESS OTHERWISE SPECIFIED DIMENSIONS ARE IN MILLIMETERS. DIMENSIONS IN [] ARE IN INCHES AND FOR CUSTOMER REFERENCE ONLY.

UNLESS OTHERWISE SPECIFIED TOLERANCES FOR MILLIMETERS ARE:
0.5 - 8mm ± 0.20mm
8 - 30mm ± 0.40mm
30 - 120mm ± 0.50mm

UNLESS OTHERWISE SPECIFIED TOLERANCES FOR INCHES ARE:
.020 - .315 = ± 0.007"
.315 - 1.180 = ± 0.015"
1.180 - 4.724 = ± 0.020"

DO NOT SCALE DRAWING

| APPROVALS | DATE |
|----------------------------|----------|
| DRAWN G.R.S. | 07/25/05 |
| CHECKED | |
| ISSUED | |
| SHEET 1 OF 1 | |
| CAD FILE C:/112/112601.DWG | |

Amphenol Connex

PART DESCRIPTION
BNC R/A CRIMP PLUG - LMR 240 CABLE (RG8X CABLE)

PART NO. **112601**

DWG. NO. 112601.DWG REV. A SIZE A SCALE NA