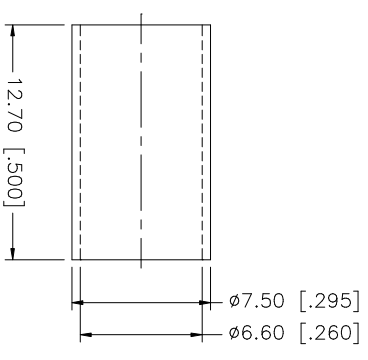
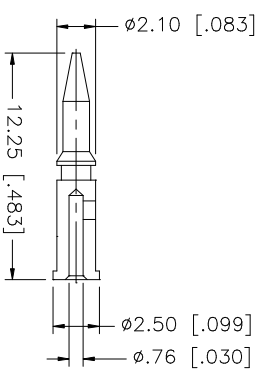
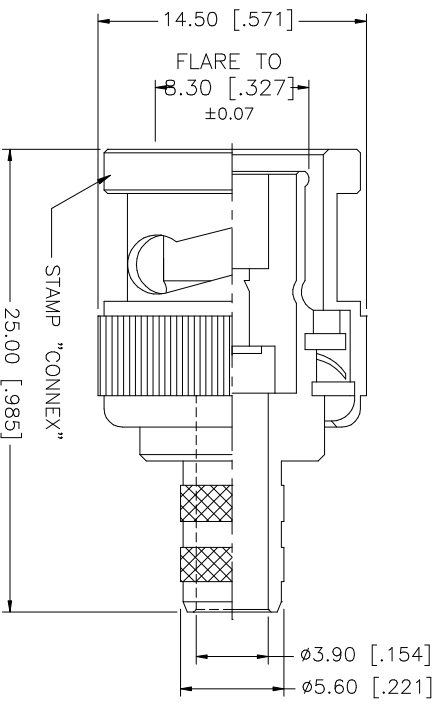
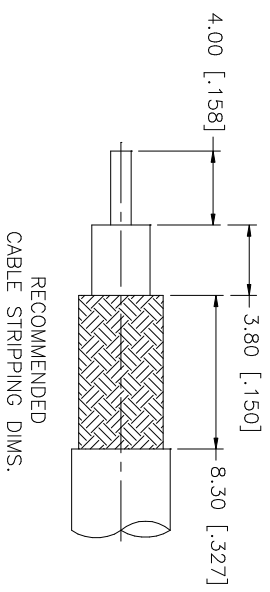


REV.	DATE	DESCRIPTION
A	11/19/03	UPDATE DRAWING FORMAT



- NOTE:
1. CRIMPED FERRULE
HEX. CRIMP SIZE .255"
 2. CRIMPED CONTACT PIN
HEX CRIMP SIZE .068"

8	DESCRIPTION	MATERIAL	FINISH	QTY	UNLESS OTHERWISE SPECIFIED DIMENSIONS ARE IN MILLIMETERS. DIMENSIONS IN [] ARE IN INCHES AND FOR CUSTOMER REFERENCE ONLY. TOLERANCES FOR MILLIMETERS ARE:	APPROVALS	DATE	PART DESCRIPTION
7					0.5 - 8mm ± 0.20mm	DRAWN G.R.S.	11/19/03	BNC CRIMP PLUG (FOR RG-59C/U CABLE)
6					8 - 30mm ± 0.40mm			
5					30 - 120mm ± 0.50mm	CHECKED		
4	FERRULE	COPPER	NICKEL	1	UNLESS OTHERWISE SPECIFIED TOLERANCES FOR INCHES ARE:	ISSUED		
3	CONTACT PIN	BRASS	GOLD	1	.020 - .315 = ± 0.007"	SHEET 1 OF 1		
2	INSULATOR	DELRIN	NATURAL	1	.315 - 1.180 = ± 0.015"	CAD FILE		
1	BODY	BRASS	NICKEL	1	1.180 - 4.724 = ± 0.020"	C:\112\112118.DWG		
	DESCRIPTION	MATERIAL	FINISH	QTY	DO NOT SCALE DRAWING	DWG. NO.		
						112118.DWG	REV. A	SCALE NA

Amphenol Connex