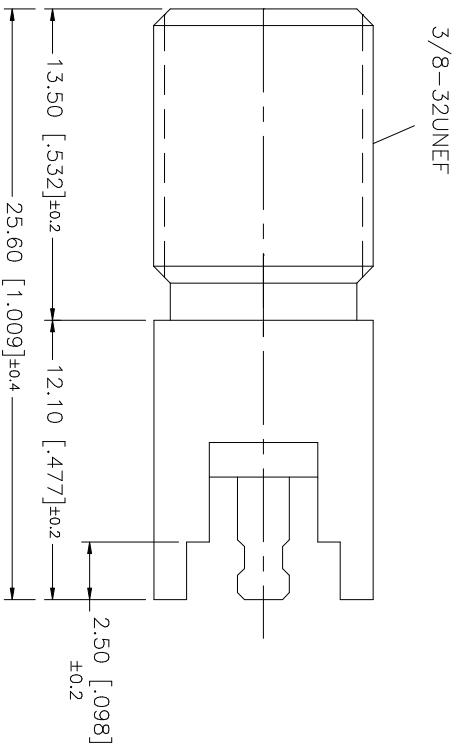
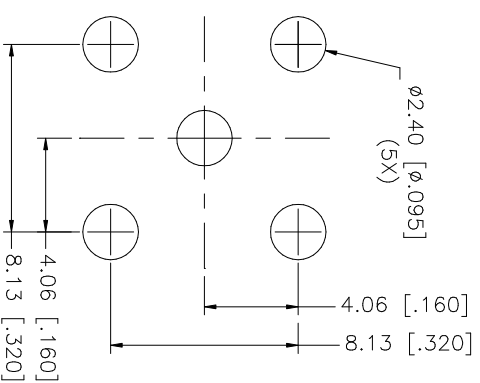
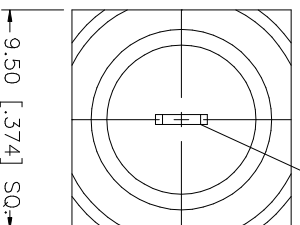


REV.	DATE	DESCRIPTION
A	06/03/03	ADD MOUNTING HOLES / UPDATE DRAWING FORMAT
B	06/25/04	MODIFY PLATING SPEC.



CONTACT MUST BE CAPTIVATED
BUT FREE TO ROTATE



P.C.B. MOUNTING HOLES

QTY	DESCRIPTION	MATERIAL	FINISH	QTY	DO NOT SCALE DRAWING
1	INSULATOR	P.P.	NATURAL	1	UNLESS OTHERWISE SPECIFIED DIMENSIONS ARE IN MILLIMETERS. DIMENSIONS IN [] ARE IN INCHES AND FOR CUSTOMER REFERENCE ONLY. UNLESS OTHERWISE SPECIFIED TOLERANCES FOR MILLIMETERS ARE: 0.5 - 8mm ± 0.20mm 8 - 30mm ± 0.40mm 30 - 120mm ± 0.50mm UNLESS OTHERWISE SPECIFIED TOLERANCES FOR INCHES ARE: .020 - .315 = ± 0.007" .315 - 1.180 = ± 0.015" 1.180 - 4.724 = ± 0.020"
1	CONTACT PIN	BRASS	TIN	1	
1	INSULATOR	P.P.	NATURAL	1	
1	INSULATOR BODY	BRASS	TIN	1	

Amphenol Connex

F.P.C. MOUNT CONNECTOR

APPROVALS	DATE
DRAWN G.R.S.	06/25/04
CHECKED	
ISSUED	
SHEET 1 OF 1	

CAD FILE	C:/222/222141.DWG	DWG. NO.	222141.DWG	REV.	B	SIZE	A	SCALE	NA
----------	-------------------	----------	------------	------	---	------	---	-------	----