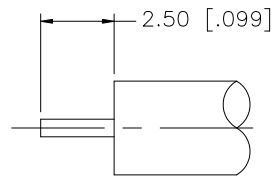
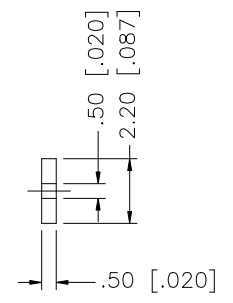
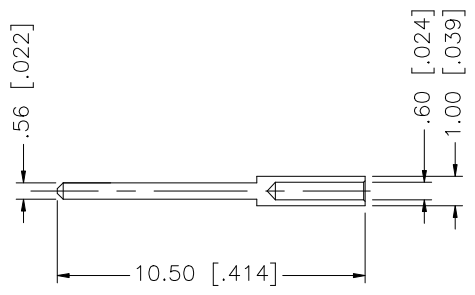
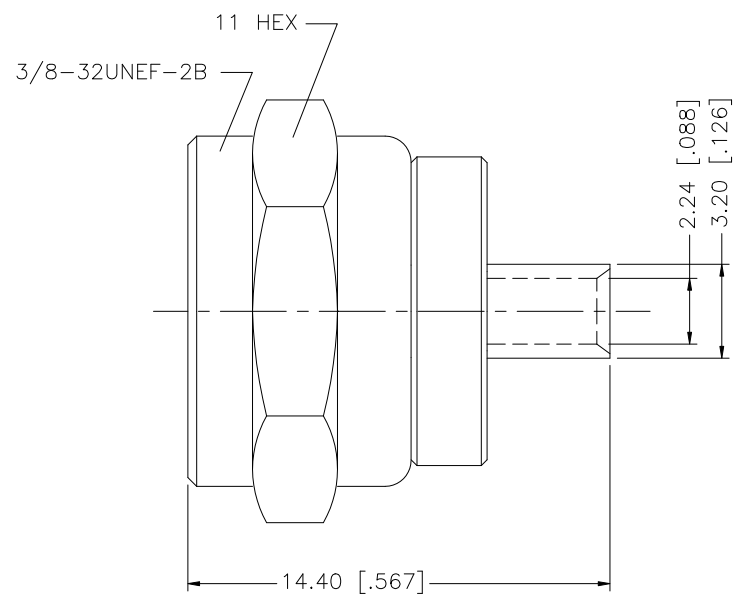


| REV. | DATE | DESCRIPTION |
|------|----------|-----------------------|
| A | 12/09/03 | UPDATE DRAWING FORMAT |
| B | 07/08/07 | ADD CABLE DESCRIPTION |



RECOMMENDED CABLE STRIPPING DIM'S.

| DESCRIPTION | MATERIAL | FINISH | QTY |
|-------------|----------|----------|-----|
| CONTACT PIN | BRASS | BRT. TIN | 1 |
| INSULATOR | TEFLON | NATURAL | 1 |
| BODY | BRASS | TIN-LEAD | 1 |

UNLESS OTHERWISE SPECIFIED DIMENSIONS ARE IN MILLIMETERS. DIMENSIONS IN [] ARE IN INCHES AND FOR CUSTOMER REFERENCE ONLY.

UNLESS OTHERWISE SPECIFIED TOLERANCES FOR MILLIMETERS ARE:
0.5 - 8mm ± 0.20mm
8 - 30mm ± 0.40mm
30 - 120mm ± 0.50mm

UNLESS OTHERWISE SPECIFIED TOLERANCES FOR INCHES ARE:
.020 - .315 = ± 0.007"
.315 - 1.180 = ± 0.015"
1.180 - 4.724 = ± 0.020"

DO NOT SCALE DRAWING

| APPROVALS | DATE |
|--------------|-------------------|
| DRAWN G.R.S. | 07/08/07 |
| CHECKED | |
| ISSUED | |
| SHEET 1 OF 1 | |
| CAD FILE | C:/222/222115.DWG |

Amphenol Connex

PART DESCRIPTION
**F DIRECT SOLDER PLUG
(FOR .085" SEMI RIGID CABLE)**

PART NO.
222115

| | | | | | | | |
|----------|------------|------|---|------|---|-------|----|
| DWG. NO. | 222115.DWG | REV. | B | SIZE | A | SCALE | NA |
|----------|------------|------|---|------|---|-------|----|