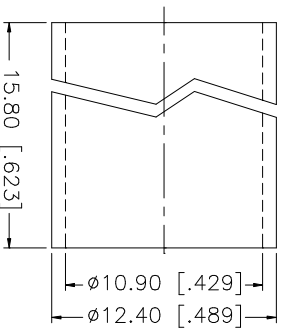
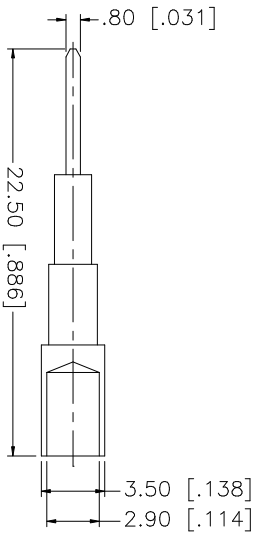
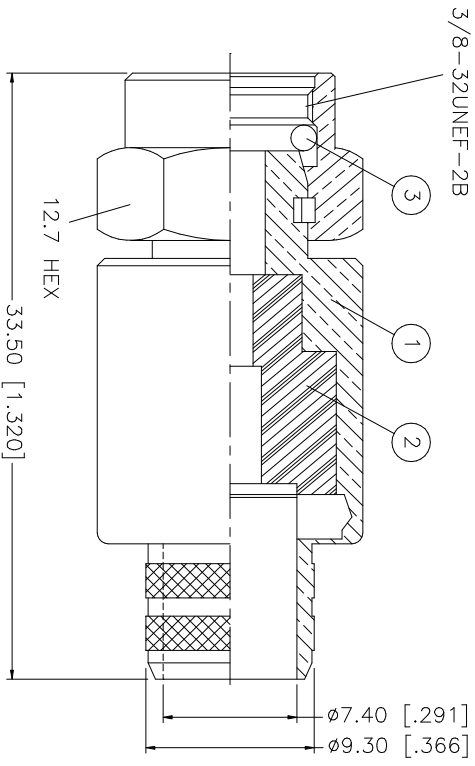
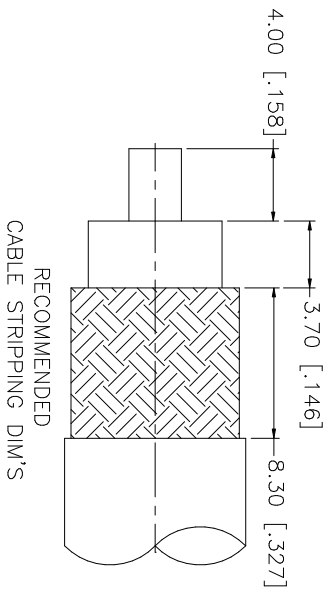


REV.	DATE	DESCRIPTION
NC	05/27/00	INITIAL RELEASE
A	11/29/05	UPDATE DRAWING FORMAT



CRIMPING NOTES:
 1. CRIMPED FERRULE
 HEX CRIMP SIZE .429"

QTY	FINISH	MATERIAL	DESCRIPTION
1	NICKEL	BRASS	BODY
1	NATURAL	TEFLON	INSULATOR
1	GOLD	BRASS	CONTACT PIN
1	BLACK	SILICONE	GASKET
1	NICKEL	COPPER	FERRULE
6			
7			
8			

APPROVALS	DATE
DRAWN G.R.S.	11/29/05
CHECKED	
ISSUED	
SHEET 1 OF 1	

UNLESS OTHERWISE SPECIFIED DIMENSIONS ARE INCHES AND FOR CUSTOMER REFERENCE ONLY.	UNLESS OTHERWISE SPECIFIED DIMENSIONS ARE IN MILLIMETERS.
0.5 - 8mm ± 0.20mm	0.5 - 8mm ± 0.20mm
8 - 30mm ± 0.40mm	8 - 30mm ± 0.40mm
30 - 120mm ± 0.50mm	30 - 120mm ± 0.50mm

UNLESS OTHERWISE SPECIFIED DIMENSIONS ARE INCHES AND FOR CUSTOMER REFERENCE ONLY.	UNLESS OTHERWISE SPECIFIED DIMENSIONS ARE IN MILLIMETERS.
.020 - .315 ± 0.007"	.020 - .315 ± 0.007"
.315 - 1.180 ± 0.015"	.315 - 1.180 ± 0.015"
1.180 - 4.724 ± 0.020"	1.180 - 4.724 ± 0.020"

DO NOT SCALE DRAWING
CAD FILE C:/222/222166.DWG

DWG. NO.	REV.	SIZE	SCALE
222166.DWG	A	A	NA

Amphenol Connex

F CRIMP PLUG
 (FOR BELDEN 8214, 9913, LMR400 CABLE)

222166