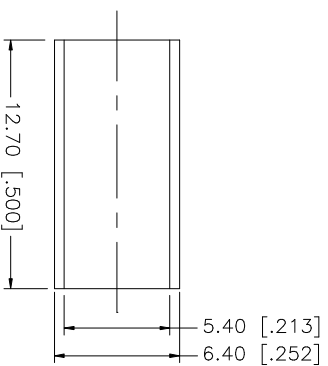
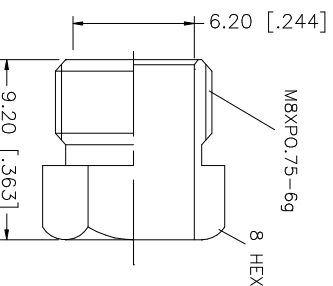
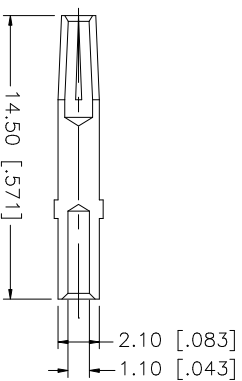
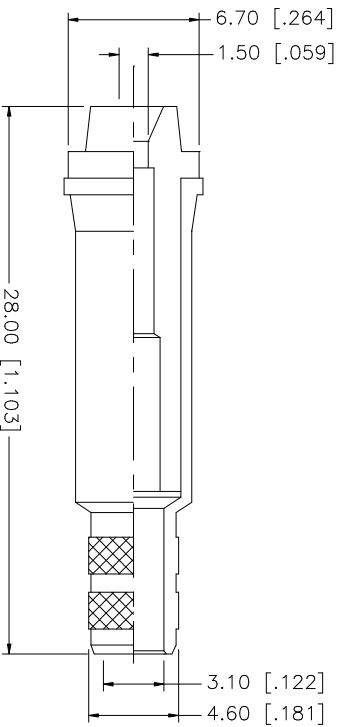
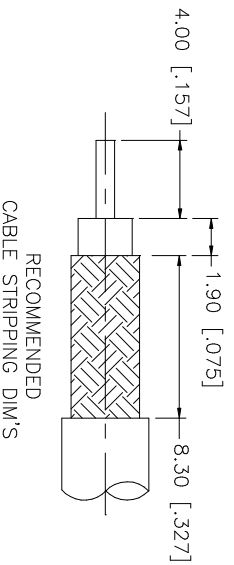


REV.	DATE
A	05/22/03

DESCRIPTION
UPDATE DRAWING FORMAT



- NOTE:
1. CRIMPED FERRULE
HEX CRIMP SIZE ".213"
 2. CRIMPED CONTACT PIN
HEX CRIMP SIZE ".068"

QTY	FINISH	MATERIAL	DESCRIPTION
1	NICKEL	BRASS	BODY
1	NATURAL	TEFLON	INSULATOR
1	GOLD	PHOS. BRONZE	CONTACT PIN
1	NICKEL	BRASS	HEX NUT
1	NICKEL	COPPER	FERRULE

APPROVALS	DATE
G.R.S.	05/22/03

DO NOT SCALE DRAWING
UNLESS OTHERWISE SPECIFIED DIMENSIONS ARE IN MILLIMETERS. DIMENSIONS IN [] ARE IN INCHES AND FOR CUSTOMER REFERENCE ONLY. TOLERANCES FOR MILLIMETERS ARE: 0.5 - 8mm ± 0.20mm 8 - 30mm ± 0.40mm 30 - 120mm ± 0.50mm UNLESS OTHERWISE SPECIFIED TOLERANCES FOR INCHES ARE: .020 - .315 ± ± 0.007" .315 - 1.180 ± ± 0.015" 1.180 - 4.724 ± ± 0.020"

CAD FILE	DWG. NO.	REV.	SIZE	SCALE
C:/192/192102.DWG	192102.DWG	A	A	NA

PART DESCRIPTION	PART NO.
FME ROTATING NIPPLE (FOR RG-58/U CABLE)	192102

Amphenol Connex