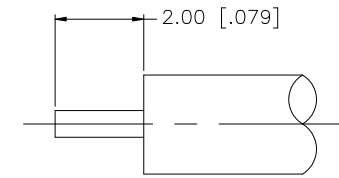
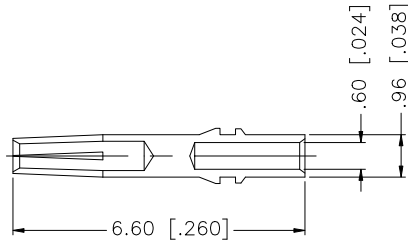
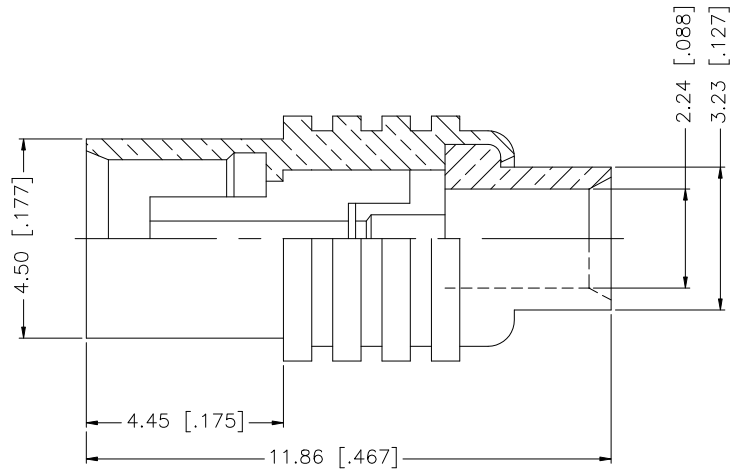


REV.	DATE	ECR NO.	DESCRIPTION
NC	01/19/98	-	INITIAL RELEASE
A	06/24/08	100039	UPDATE DRAWING FORMAT



RECOMMENDED CABLE STRIPPING DIMENSIONS

8					<small>UNLESS OTHERWISE SPECIFIED DIMENSIONS ARE IN MILLIMETERS. DIMENSIONS IN [] ARE IN INCHES AND FOR CUSTOMER REFERENCE ONLY.</small> <small>UNLESS OTHERWISE SPECIFIED TOLERANCES FOR MILLIMETERS ARE:</small> 0.5 - 8mm ± 0.20mm 8 - 30mm ± 0.40mm 30 - 120mm ± 0.50mm <small>UNLESS OTHERWISE SPECIFIED TOLERANCES FOR INCHES ARE:</small> .020 - .315 = ± 0.007" .315 - 1.180 = ± 0.015" 1.180 - 4.724 = ± 0.020"	APPROVALS	DATE	<h1 style="color: blue;">Amphenol Connex</h1>				
7				DRAWN		GRS	06/24/08					MCX DIRECT SOLDER JACK (FOR .085", .086" CABLE)
6				CHECKED				PART NO. 252131				
5				ISSUED								DWG. NO. 252131.DWG
4				SHEET	1 OF 1		REV.	A	SIZE	A	SCALE	
3	CONTACT PIN	BER. COPPER	GOLD	1	CAD FILE		C:/252/252131.DWG					
2	INSULATOR	PTFE	NATURAL	1	DO NOT SCALE DRAWING							
1	BODY	BRASS	GOLD	1								
	DESCRIPTION	MATERIAL	FINISH	QTY								