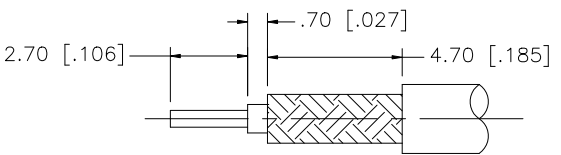
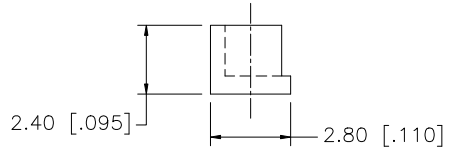
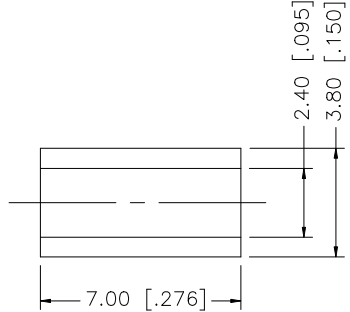
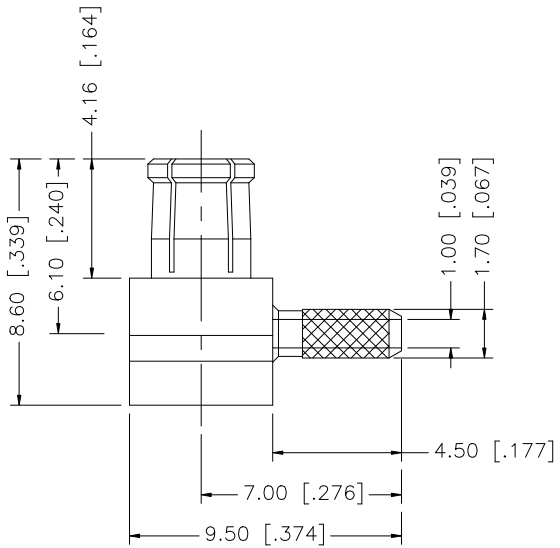
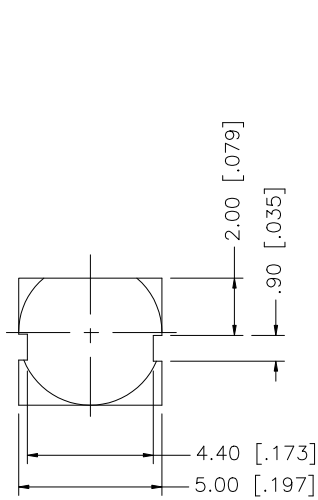
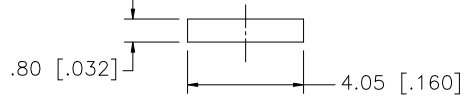


| REV. | DATE     | DESCRIPTION                                   |
|------|----------|---|
| A    | 01/12/02 | MODIFY FERRULE LENGTH                         |
| B    | 01/06/08 | MODIFY BODY SLOT DIMENSIONS AND BARREL LENGTH |



RECOMMENDED CABLE STRIPPING DIMENSIONS



- NOTES:
1. CRIMPED FERRULE HEX CRIMP SIZE .128"
  2. CONTACT PIN TO SOLDER.

| QTY | DESCRIPTION | MATERIAL    | FINISH  |
|-----|-------------|-------------|---------|
| 8   |             |             |         |
| 7   | FERRULE     | COPPER      | GOLD    |
| 6   | COVER       | BRASS       | GOLD    |
| 5   | INSULATOR   | DELRIN      | NATURAL |
| 4   | CONTACT PIN | BRASS       | GOLD    |
| 3   | INSULATOR   | TEFLON      | NATURAL |
| 2   | BODY        | BER. COPPER | GOLD    |
| 1   | HOUSING     | BRASS       | GOLD    |

UNLESS OTHERWISE SPECIFIED DIMENSIONS ARE IN MILLIMETERS. DIMENSIONS IN [ ] ARE IN INCHES AND FOR CUSTOMER REFERENCE ONLY.

UNLESS OTHERWISE SPECIFIED TOLERANCES FOR MILLIMETERS ARE:  
0.5 - 8mm ± 0.20mm  
8 - 30mm ± 0.40mm  
30 - 120mm ± 0.50mm

UNLESS OTHERWISE SPECIFIED TOLERANCES FOR INCHES ARE:  
.020 - .315 = ± 0.007"  
.315 - 1.180 = ± 0.015"  
1.180 - 4.724 = ± 0.020"

DO NOT SCALE DRAWING

| APPROVALS    | DATE              |
|--------------|-------------------|
| DRAWN G.R.S. | 01/06/07          |
| CHECKED      |                   |
| ISSUED       |                   |
| SHEET 1 OF 1 |                   |
| CAD FILE     | C:/252/252135.DWG |

**Amphenol Connex**

PART DESCRIPTION  
**MCX R/A CRIMP PLUG  
(FOR RG-178B/U, 196A/U)**

PART NO.  
**252135**

|                     |        |        |          |
|---------------------|--------|--------|----------|
| DWG. NO. 252135.DWG | REV. B | SIZE A | SCALE NA |
|---------------------|--------|--------|----------|