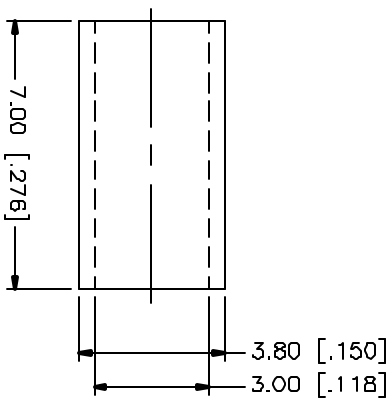
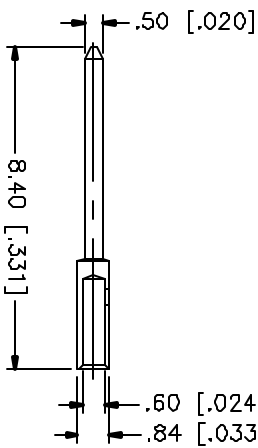
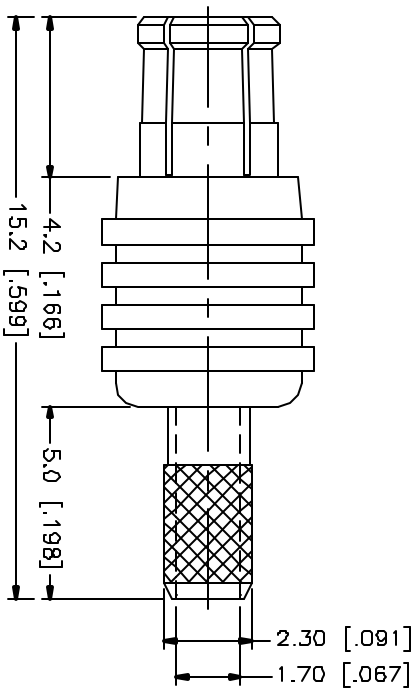
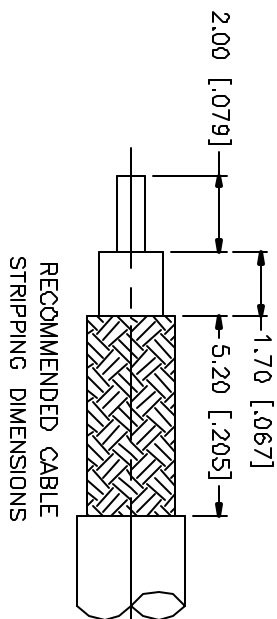


| REV. | DATE | DESCRIPTION |
|------|----------|-----------------|
| NC | 11/13/01 | INITIAL RELEASE |



CRIMP NOTES:

1. CRIMPED FERRULE
HEX CRIMP SIZE .128"

| DESCRIPTION | MATERIAL | FINISH | UNLESS OTHERWISE SPECIFIED DIMENSIONS ARE IN MILLIMETERS FOR CUSTOMER REFERENCE ONLY | APPROVALS | DATE | TITLE | SCALE | PART NO. | DWG. NO. | SHEET | REV. | |
|---------------|-------------|-------------|---|-----------|--------|----------|---|----------|-----------|-------|------|--|
| 1 HOUSING | BRASS | GOLD | UNLESS OTHERWISE SPECIFIED DIMENSIONS ARE IN MILLIMETERS FOR CUSTOMER REFERENCE ONLY UNLESS OTHERWISE SPECIFIED TOLERANCES FOR MILLIMETERS ARE: 0.5-6 = ± 0.2 6-30 = ± 0.4 30-120 = ± 0.6 120-315 = ± 1 315-1000 = ± 1.6 1000-2000 = ± 2.4 | DRAWN | G.R.S. | 11/13/01 | A | 99001 | 252103-75 | 1 | NC | |
| 2 BODY | BER. COPPER | GOLD | | CHECKED | | | | | | | | |
| 3 INSULATOR | TEFLON | NATURAL | | ISSUED | | | | | | | | |
| 4 CONTACT PIN | BRASS | GOLD 30 MN. | | | | | MCX STRAIGHT CRIMP PLUG (FOR RG-179/u CABLE) | | | | | |
| 5 FERRULE | COPPER | GOLD | | | | | | | | | | |
| 6 | | | | | | | | | | | | |
| 7 | | | | | | | | | | | | |
| 8 | | | | | | | | | | | | |

