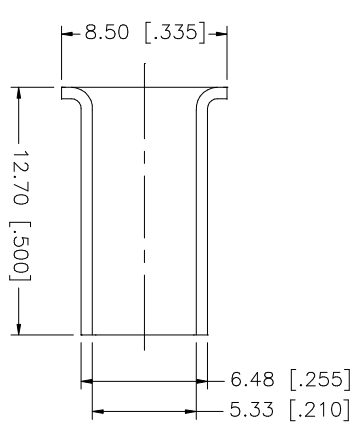
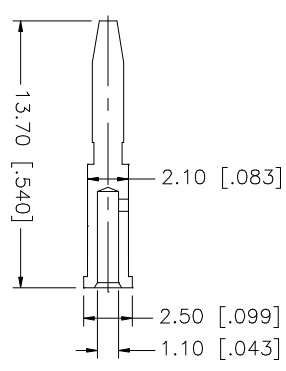
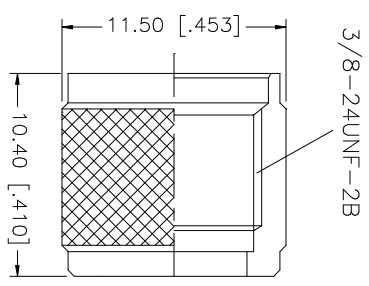
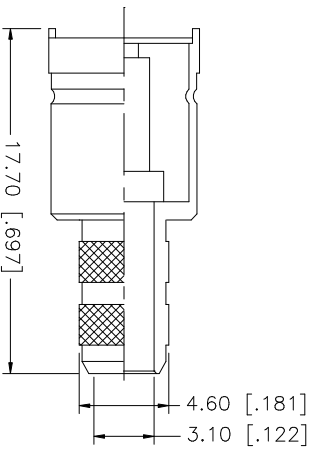
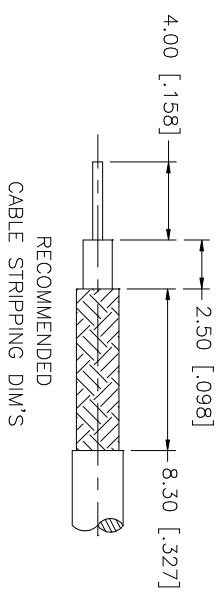


REV.	DATE	DESCRIPTION
A	03/06/03	UPDATE DRAWING FORMAT



8	DESCRIPTION	MATERIAL	FINISH	QTY	UNLESS OTHERWISE SPECIFIED DIMENSIONS ARE IN MILLIMETERS. DIMENSIONS IN [] ARE IN INCHES AND FOR CUSTOMER REFERENCE ONLY. TOLERANCES FOR MILLIMETERS ARE:	APPROVALS	DATE	DWG. NO.	REV.	SIZE	SCALE
8					UNLESS OTHERWISE SPECIFIED DIMENSIONS ARE IN MILLIMETERS. DIMENSIONS IN [] ARE IN INCHES AND FOR CUSTOMER REFERENCE ONLY. TOLERANCES FOR MILLIMETERS ARE:						
7					UNLESS OTHERWISE SPECIFIED TOLERANCES FOR MILLIMETERS ARE:						
6					0.5 - 8mm ± 0.20mm						
5					8 - 30mm ± 0.40mm						
4	FERRULE	COPPER	NICKEL	1	30 - 120mm ± 0.50mm						
3	CONTACT PIN	BRASS	GOLD	1	UNLESS OTHERWISE SPECIFIED TOLERANCES FOR INCHES ARE:						
2	INSULATOR	TEFLON	NATURAL	1	0.20 - .315 = ± 0.007"						
1	SHELL/BODY	BRASS	NICKEL	1	.315 - 1.180 = ± 0.015" 1.180 - 4.724 = ± 0.020"						
	DESCRIPTION	MATERIAL	FINISH	QTY	DO NOT SCALE DRAWING						
						CAD FILE					
						C:/182/182110.DWG					
						DWG. NO.					
						182110.DWG					
						REV.					
						A					
						SIZE					
						A					
						SCALE					
						NA					
						<p>Amphenol Connex</p> <p>MINI-UHF CRIMP PLUG (FOR RG-58/U, 141/U, 303/U CABLE)</p> <p>PART NO. 182110</p>					