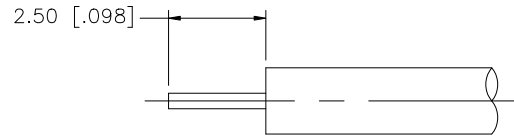
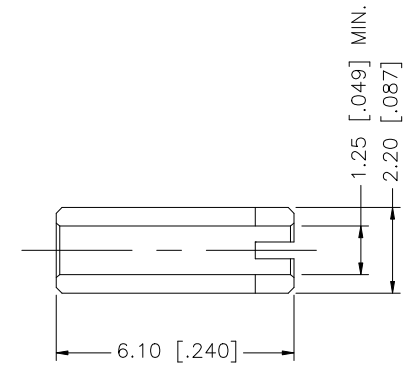
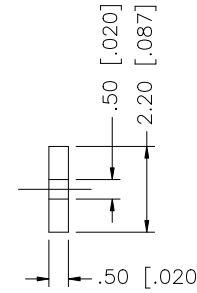
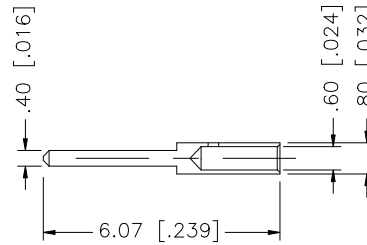
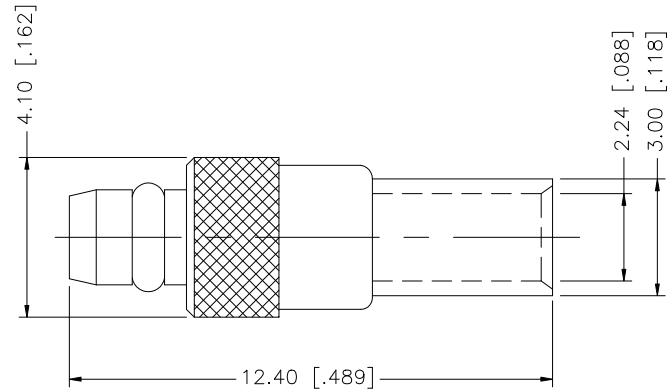


REV.	DATE	DESCRIPTION
NC	05/25/00	INITIAL RELEASE
A	12/11/07	UPDATE DRAWING FORMAT



RECOMMENDED CABLE
STRIPPING DIM'S.



DESCRIPTION	MATERIAL	FINISH	QTY	DO NOT SCALE DRAWING	APPROVALS	DATE	<h1 style="text-align: center; color: blue;">Amphenol Connex</h1>												
8							MMCX STRAIGHT DIRECT SOLDER PLUG (FOR .047" SEMI-RIGID CABLE)												
7						262127													
6	FERRULE	COPPER	GOLD	1	DRAWN						G.R.S.	12/11/07	PART NO. 262127 DWG. NO. 262127.DWG						
5	RETAINER RING	BER. COPPER	GOLD	1	CHECKED										REV. A SIZE A SCALE NA				
4	BARREL	BRASS	GOLD	1	ISSUED														
3	CONTACT PIN	BRASS	GOLD	1	SHEET					1 OF 1									
2	INSULATOR	TEFLON	NATURAL	1	CAD FILE	C:/262/262127.DWG													
1	BODY	BRASS	GOLD	1															

UNLESS OTHERWISE SPECIFIED DIMENSIONS ARE IN MILLIMETERS. DIMENSIONS IN [] ARE IN INCHES AND FOR CUSTOMER REFERENCE ONLY.

UNLESS OTHERWISE SPECIFIED TOLERANCES FOR MILLIMETERS ARE:
 0.5 - 8mm ± 0.20mm
 8 - 30mm ± 0.40mm
 30 - 120mm ± 0.50mm

UNLESS OTHERWISE SPECIFIED TOLERANCES FOR INCHES ARE:
 .020 - .315 = ± 0.007"
 .315 - 1.180 = ± 0.015"
 1.180 - 4.724 = ± 0.020"