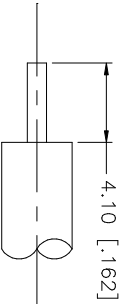
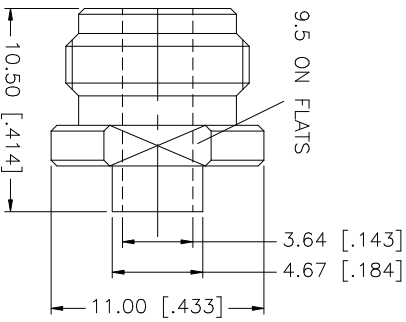
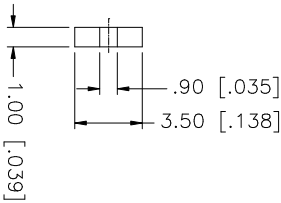
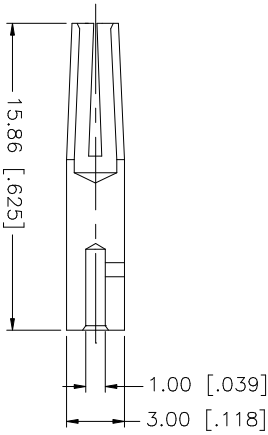
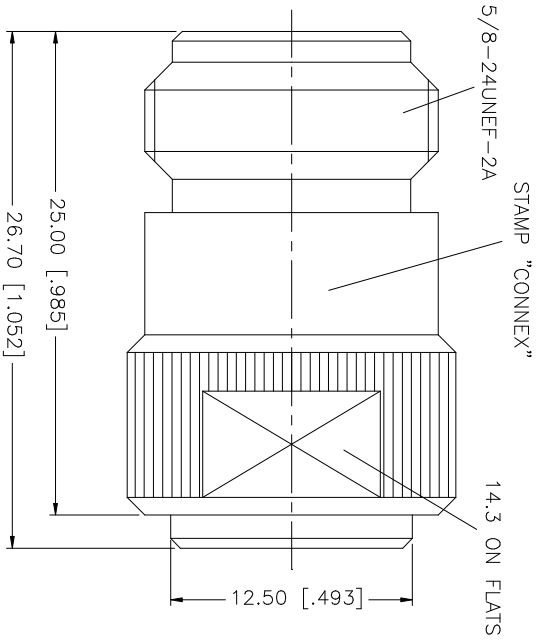


REV.	DATE	DESCRIPTION
NC	10/23/00	INITIAL RELEASE
A	06/25/06	UPDATE DRAWING FORMAT, REVISE PLATING TO NEXCOTE



RECOMMENDED CABLE  
STRIPPING DIM'S

NOTE:  
1. CRIMPED CONTACT PIN HEX: CRIMP SIZE .100"

QTY	FINISH	MATERIAL	DESCRIPTION
1	NEXCOTE	BRASS	BODY
2	NATURAL	TEFLON	INSULATOR
1	GOLD	PHOS. BRONZE	CONTACT PIN
1	GOLD	BRASS	SOLDER NUT
5			
6			
7			
8			

UNLESS OTHERWISE SPECIFIED DIMENSIONS ARE INCHES AND FOR CUSTOMER REFERENCE ONLY.  
TOLERANCES FOR MILLIMETERS ARE:  
0.5 - 8mm ± 0.20mm  
8 - 30mm ± 0.40mm  
30 - 120mm ± 0.50mm

UNLESS OTHERWISE SPECIFIED DIMENSIONS ARE INCHES AND FOR CUSTOMER REFERENCE ONLY.  
TOLERANCES FOR INCHES ARE:  
.020 - .315 = ± 0.007"  
.315 - 1.180 = ± 0.015"  
1.180 - 4.724 = ± 0.020"

DO NOT SCALE DRAWING

APPROVALS	DATE
G.R.S.	06/25/06

CAD FILE: C:/172/172238.DWG

DWG. NO. 172238.DWG

REV. A

SIZE A

SCALE NA

**Amphenol Connex**

N DIRECT SOLDER JACK  
(FOR .141" SEMI RIGID CABLE)

172238