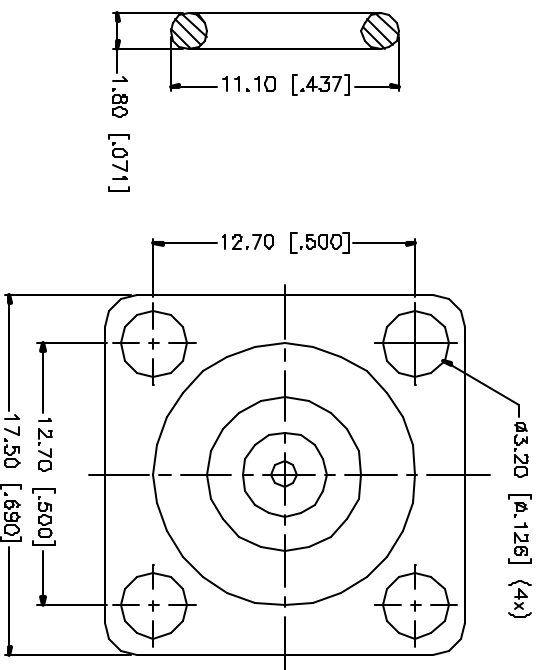
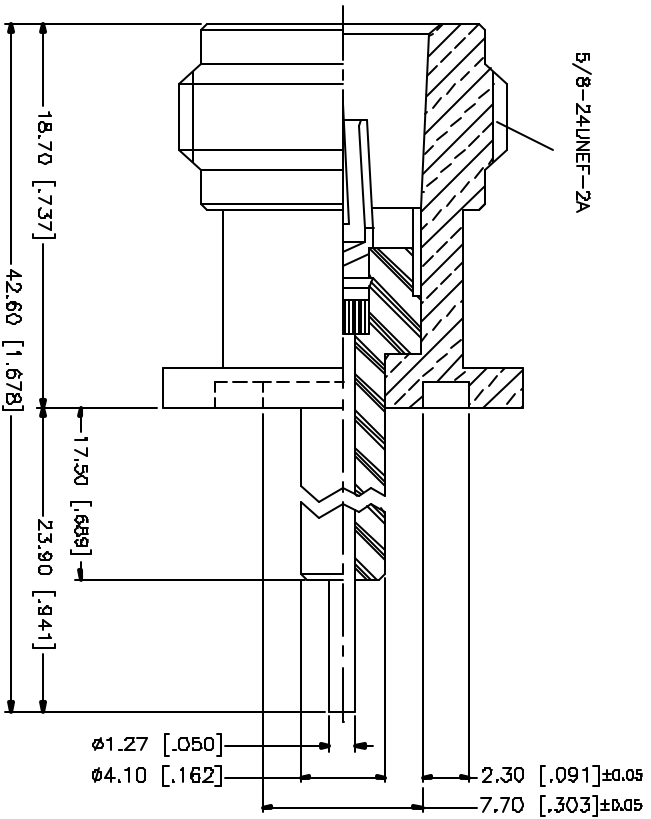


| REV. | DATE | DESCRIPTION |
|------|----------|---------------------------------|
| A | 02/27/00 | REVISE O-RING GROOVE |
| B | 04/22/00 | ADD DURROMETER RATING TO GASKET |
| C | 04/19/05 | UPDATE DRAWING FORMAT |



| NO. | DESCRIPTION | MATERIAL | FINISH | QTY | UNLESS OTHERWISE SPECIFIED DIMENSIONS ARE IN MILLIMETERS, INDICATED IN () ARE IN INCHES AND FOR CUSTOMER REFERENCE ONLY. | APPROVALS | DATE | PART DESCRIPTION | DWG. NO. | REV. | SIZE | SCALE |
|-----|-------------|----------------------------------|---------|-----|---|-----------|------|---|------------|------|------|-------|
| 7 | | | | | | | | Amphenol Connex N PANEL RECEPTACLE EXTENDED TEFLON (.689/.941) | 172224.DWG | C | A | NA |
| 6 | | | | | UNLESS OTHERWISE SPECIFIED DIMENSIONS ARE IN MILLIMETERS, INDICATED IN () ARE IN INCHES AND FOR CUSTOMER REFERENCE ONLY. | | | | | | | |
| 5 | | | | | UNLESS OTHERWISE SPECIFIED DIMENSIONS ARE IN MILLIMETERS, INDICATED IN () ARE IN INCHES AND FOR CUSTOMER REFERENCE ONLY. | | | | | | | |
| 4 | GASKET | SILICONE 70A SHORE DUREOMETER | RED | 1 | UNLESS OTHERWISE SPECIFIED DIMENSIONS ARE IN MILLIMETERS, INDICATED IN () ARE IN INCHES AND FOR CUSTOMER REFERENCE ONLY. | | | | | | | |
| 3 | CONTACT PIN | PHOS. BRONZE | GOLD | 1 | UNLESS OTHERWISE SPECIFIED DIMENSIONS ARE IN MILLIMETERS, INDICATED IN () ARE IN INCHES AND FOR CUSTOMER REFERENCE ONLY. | | | | | | | |
| 2 | INSULATOR | TEFLON | NATURAL | 1 | UNLESS OTHERWISE SPECIFIED DIMENSIONS ARE IN MILLIMETERS, INDICATED IN () ARE IN INCHES AND FOR CUSTOMER REFERENCE ONLY. | | | | | | | |
| 1 | BODY | BRASS | NICKEL | 1 | UNLESS OTHERWISE SPECIFIED DIMENSIONS ARE IN MILLIMETERS, INDICATED IN () ARE IN INCHES AND FOR CUSTOMER REFERENCE ONLY. | | | | | | | |
| | DESCRIPTION | MATERIAL | FINISH | QTY | DO NOT SCALE DRAWING | | | | | | | |