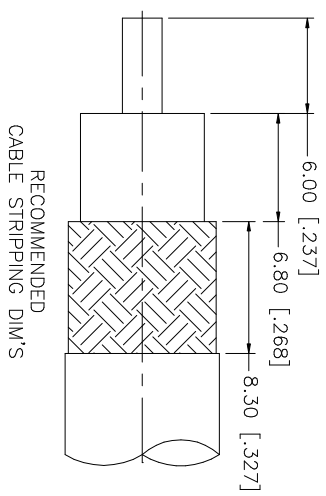
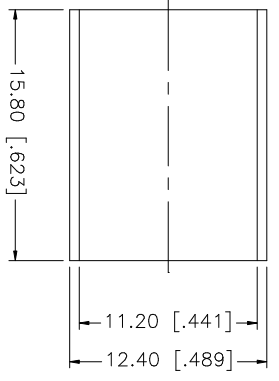
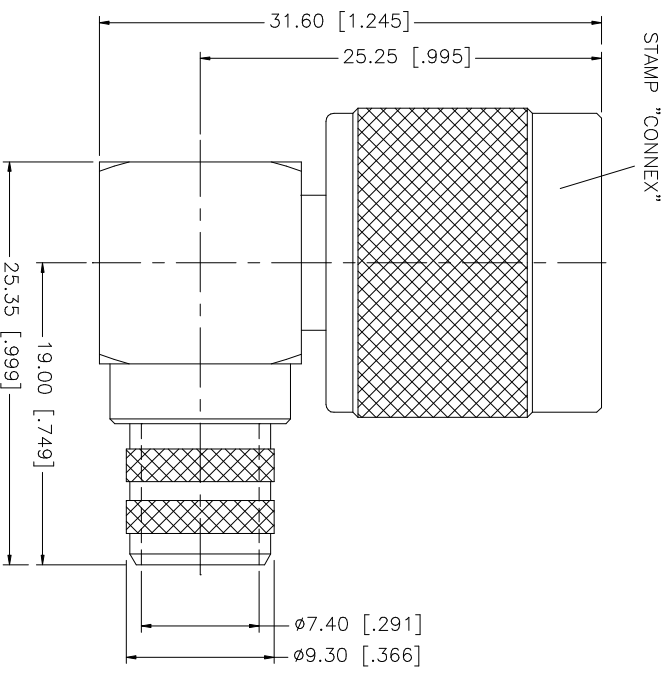


REV.	DATE	DESCRIPTION
NC	08/23/99	INITIAL RELEASE
A	06/01/04	UPDATE DRAWING FORMAT
B	04/30/06	ADD RG214/U DOUBLE BRAID CABLE



NOTE:  
 1. CRIMPED FERRULE  
 HEX CRIMP SIZE .429"  
 2. CONTACT PIN TO SOLDER

NO.	DESCRIPTION	MATERIAL	FINISH	QTY	UNLESS OTHERWISE SPECIFIED DIMENSIONS ARE IN MILLIMETERS. DIMENSIONS IN [ ] ARE IN INCHES AND FOR CUSTOMER REFERENCE ONLY.	UNLESS OTHERWISE SPECIFIED TOLERANCES FOR MILLIMETERS ARE:	UNLESS OTHERWISE SPECIFIED TOLERANCES FOR INCHES ARE:	APPROVALS	DATE	PART DESCRIPTION	PART NO.	DWG. NO.	REV.	SIZE	SCALE
8						0.5 - 8mm ± 0.20mm	.020 - .315 = ± 0.007"	G.R.S.	04/30/06	N R/A CRIMP PLUG	172167	172167.DWG	B	A	NA
7						8 - 30mm ± 0.40mm	.315 - 1.180 = ± 0.015"			RG214/U DOUBLE BRAID CABLE					
6	FERRULE	COPPER	NEXCOTE	1		30 - 120mm ± 0.50mm	1.180 - 4.724 = ± 0.020"								
5	CLAMP NUT	BRASS	NEXCOTE	1											
4	CONTACT PIN	BRASS	GOLD	1											
3	INSULATOR	TEFLON	NATURAL	1											
2	BODY/BARREL	BRASS	NEXCOTE	1											
1	DESCRIPTION														

**Amphenol Connex**

DO NOT SCALE DRAWING	CAD FILE
	C:/172/172167.DWG