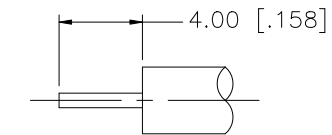
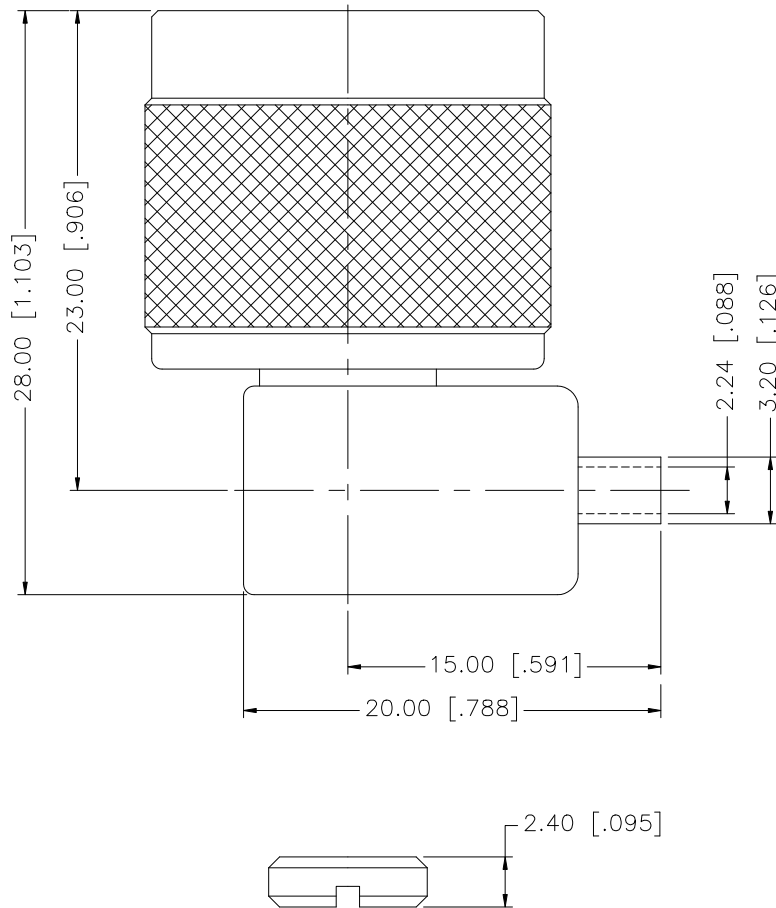


REV.	DATE	DESCRIPTION
NC	03/23/99	INITIAL RELEASE
A	05/22/07	UPDATE DRAWING FORMAT
B	09/20/07	REVISE BODY PLATING TO NEXCOTE



RECOMMENDED
CABLE STRIPPING DIM'S

				UNLESS OTHERWISE SPECIFIED DIMENSIONS ARE IN MILLIMETERS, DIMENSIONS IN [] ARE IN INCHES AND FOR CUSTOMER REFERENCE ONLY.	APPROVALS	DATE	Amphenol Connex			
8					DRAWN	G.R.S.				09/20/07
7					CHECKED			PART NO. 172235		
6					ISSUED					
5					SHEET	1 OF 1		REV. B SIZE A SCALE NA		
4	BARREL	BRASS	GOLD	1	CAD FILE C:/172/172235.DWG					
3	CONTACT PIN	BRASS	GOLD	1	DO NOT SCALE DRAWING					
2	INSULATOR	TEFLON	NATURAL	1						
1	BODY	BRASS	NEXCOTE	1						

UNLESS OTHERWISE SPECIFIED DIMENSIONS ARE IN MILLIMETERS, DIMENSIONS IN [] ARE IN INCHES AND FOR CUSTOMER REFERENCE ONLY.

UNLESS OTHERWISE SPECIFIED TOLERANCES FOR MILLIMETERS ARE:
0.5 - 8mm ± 0.20mm
8 - 30mm ± 0.40mm
30 - 120mm ± 0.50mm

UNLESS OTHERWISE SPECIFIED TOLERANCES FOR INCHES ARE:
.020 - .315 = ± 0.007"
.315 - 1.180 = ± 0.015"
1.180 - 4.724 = ± 0.020"