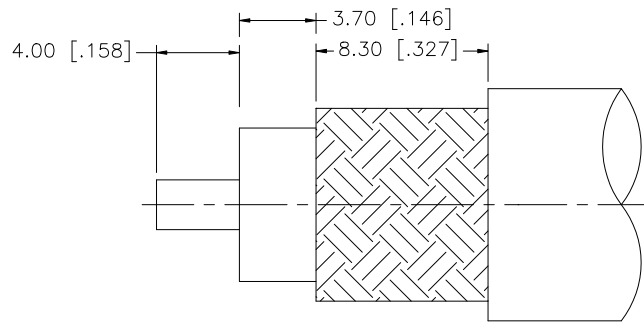
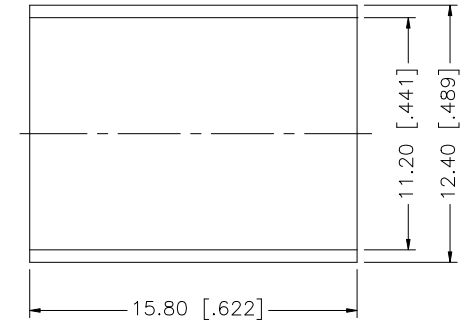
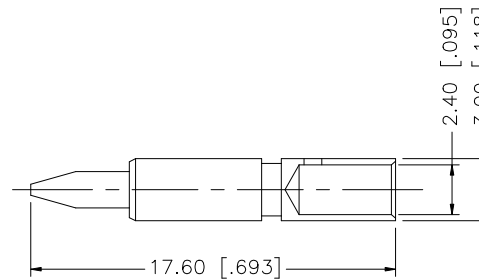
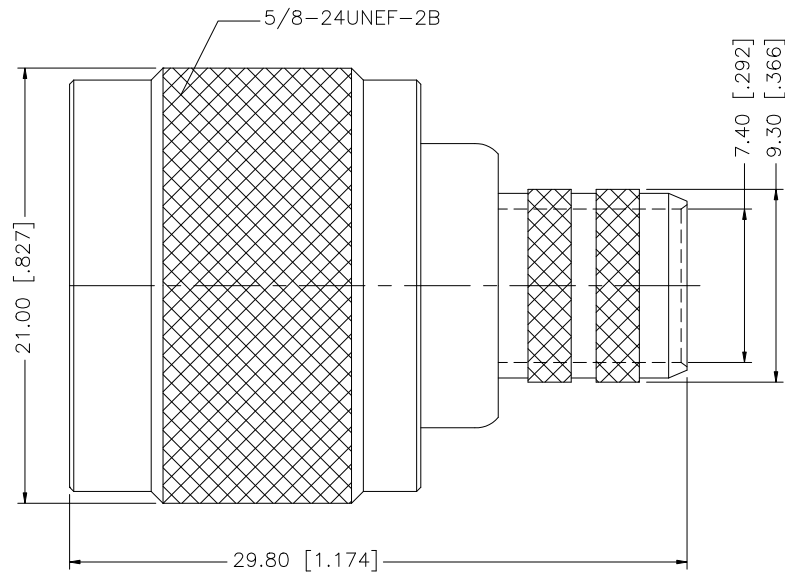


| REV. | DATE | DESCRIPTION |
|------|----------|-----------------------------------|
| A | 01/30/04 | UPDATE DRAWING FORMAT |
| B | 05/22/05 | MODIFY PLATING SPEC |
| C | 07/08/07 | REVISE STRIPPING DIMS AND FERRULE |



RECOMMENDED
CABLE STRIPPING DIM'S



NOTE:

1. CRIMPED FERRULE HEX CRIMP SIZE .429"
2. CRIMPED CONTACT PIN HEX CRIMP SIZE .100"

| DESCRIPTION | MATERIAL | FINISH | QTY | DO NOT SCALE DRAWING | APPROVALS | DATE | Amphenol Connex | | | | | |
|-------------|-------------|--------|---------|---|----------------------------|--------|-----------------|--|------------|--------|--------|----------|
| 8 | | | | <small>UNLESS OTHERWISE SPECIFIED DIMENSIONS ARE IN MILLIMETERS. DIMENSIONS IN [] ARE IN INCHES AND FOR CUSTOMER REFERENCE ONLY.</small> <small>UNLESS OTHERWISE SPECIFIED TOLERANCES FOR MILLIMETERS ARE:</small> 0.5 - 8mm ± 0.20mm 8 - 30mm ± 0.40mm 30 - 120mm ± 0.50mm <small>UNLESS OTHERWISE SPECIFIED TOLERANCES FOR INCHES ARE:</small> .020 - .315 = ± 0.007" .315 - 1.180 = ± 0.015" 1.180 - 4.724 = ± 0.020" | DRAWN | G.R.S. | 07/08/07 | N CRIMP PLUG (FOR RG-214/U CABLE) | | | | |
| 7 | | | CHECKED | | | | | | | | | |
| 6 | | | ISSUED | | | | | | | | | |
| 5 | FERRULE | COPPER | NECOTE | | 1 | SHEET | 1 OF 1 | PART NO. 172166 | | | | |
| 4 | CONTACT PIN | BRASS | GOLD | | 1 | | | DWG. NO. | 172166.DWG | REV. C | SIZE A | SCALE NA |
| 3 | INSULATOR | TEFLON | NATURAL | | 1 | | | | | | | |
| 2 | BARREL | BRASS | NEXCOTE | | 1 | | | | | | | |
| 1 | BODY | BRASS | NEXCOTE | | 1 | | | | | | | |
| | | | | | CAD FILE C:/172/172166.DWG | | | | | | | |