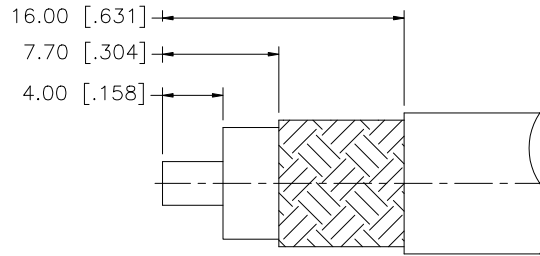
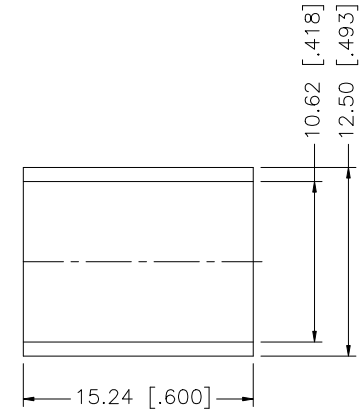
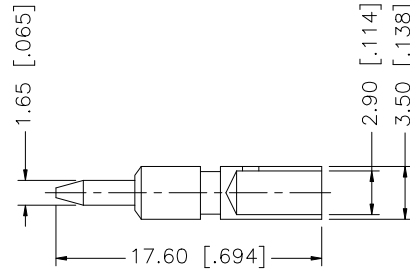
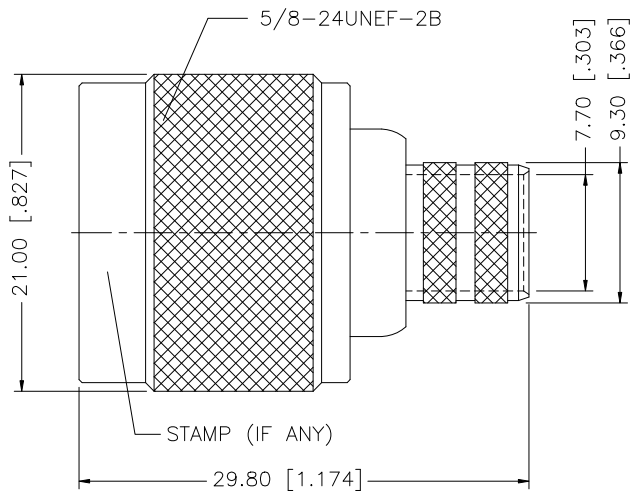


REV.	DATE	ECR NO.	DESCRIPTION
A	02/08/03	-	UPDATE DRAWING FORMAT
B	02/23/06	-	MODIFY FERRULE DIAMETERS
C	05/22/06	-	MODIFY FERRULE LENGTH
D	05/27/08	100021	REVISE CONTACT PIN (ITEM 5) PLATING TO "GOLD"



RECOMMENDED  
CABLE STRIPPING DIM'S

NOTE:

1. CRIMPED FERRULE HEX CRIMP SIZE .429"
2. CRIMPED CONTACT PIN HEX CRIMP SIZE .118"

DESCRIPTION	MATERIAL	FINISH	QTY	DO NOT SCALE DRAWING	APPROVALS	DATE	<h1 style="color: blue; text-align: center;">Amphenol Connex</h1>									
8					DRAWN	G.R.S.	05/27/08	<b>N CRIMP PLUG (FOR LMR400, B9913 CABLE)</b>								
7					CHECKED											
6	FERRULE	COPPER	NEXCOTE	1	ISSUED			<b>172102H243</b>								
5	CONTACT PIN	BRASS	GOLD	1	SHEET	1 OF 1										
4	RETAINER RING	SUS 304	NATURAL	1	CAD FILE			DWG. NO.	172102H243.DWG	REV.	D	SIZE	A	SCALE	NA	
3	GASKET	SILICONE	RED	1	UNLESS OTHERWISE SPECIFIED TOLERANCES FOR MILLIMETERS ARE: 0.5 - 8mm ± 0.20mm 8 - 30mm ± 0.40mm 30 - 120mm ± 0.50mm UNLESS OTHERWISE SPECIFIED TOLERANCES FOR INCHES ARE: .020 - .315 = ± 0.007" .315 - 1.180 = ± 0.015" 1.180 - 4.724 = ± 0.020"											
2	INSULATOR	TEFLON	NATURAL	1	UNLESS OTHERWISE SPECIFIED DIMENSIONS ARE IN MILLIMETERS. DIMENSIONS IN [ ] ARE IN INCHES AND FOR CUSTOMER REFERENCE ONLY.											
1	SHELL/BODY	BRASS	NEXCOTE	1	DO NOT SCALE DRAWING											