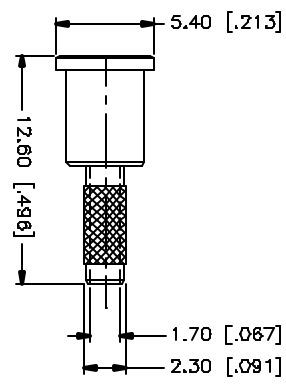
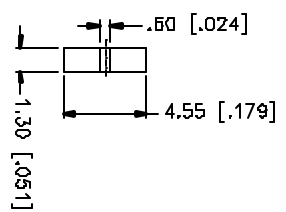
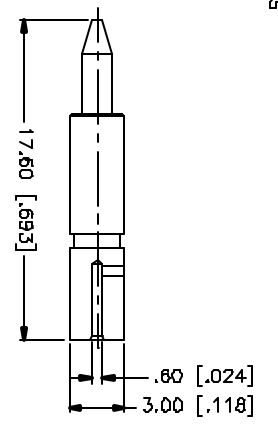
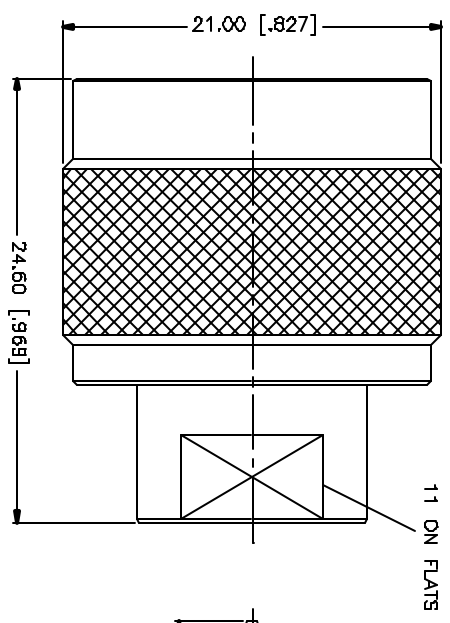
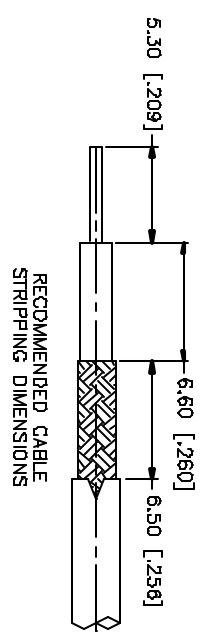
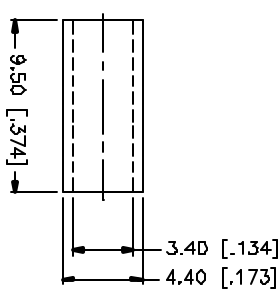
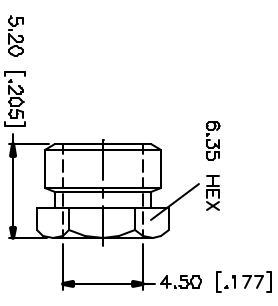


REV.	DATE	DESCRIPTION
A	08/30/00	MODIFY BARREL O.D. DIMENSION
B	05/22/05	UPDATE DRAWING FORMAT/ MODIFY PLATING SPEC



NOTE:  
USE .151 HEX CRIMP DIE TO TERMINATE FERRULE TO CABLE.  
— CONNEX TOOL 47-10160  
— IDEAL TOOL 36-489



QTY	FINISH	MATERIAL	DESCRIPTION
1	NEKOCOTE	BRASS	BODY
1	NATURAL	TEFLON	INSULATOR
1	COLD	BRASS	CONTACT PIN
1	NEKOCOTE	BRASS	BARREL
1	NEKOCOTE	BRASS	HEX NUT
1	NEKOCOTE	BRASS	FERRULE

APPROVALS	DATE
Q.R.S.	05/22/05

REV.	DATE	DESCRIPTION
A	08/30/00	MODIFY BARREL O.D. DIMENSION
B	05/22/05	UPDATE DRAWING FORMAT/ MODIFY PLATING SPEC

<p>UNLESS OTHERWISE SPECIFIED DIMENSIONS ARE IN INCHES AND DECIMAL FRACTIONS THEREOF. DIMENSIONS FOR MILLING ARE: D.5 - .001mm ± 0.020mm B - .001mm ± 0.040mm 3D - .120mm ± 0.050mm</p> <p>UNLESS OTHERWISE SPECIFIED DIMENSIONS FOR WELDING ARE: .020 - .315 = ± 0.007" .315 - 1.180 = ± 0.015" 1.180 - 4.724 = ± 0.030"</p>	<p>DD NOT SCALE DRAWING</p>
---	-----------------------------

<p>Q&amp;D FILE C:/172/172171.DWG</p>	<p>DWG. NO. 172171.DWG</p>	<p>REV. B</p>	<p>SIZE A</p>	<p>SCALE NA</p>
---	--------------------------------	---------------	---------------	-----------------

**Amphenol Connex**

PART DESCRIPTION  
**N CRIMP PLUG**  
(FOR RG-316/U DOUBLE BRAID CABLE)

PART NO.  
**172171**