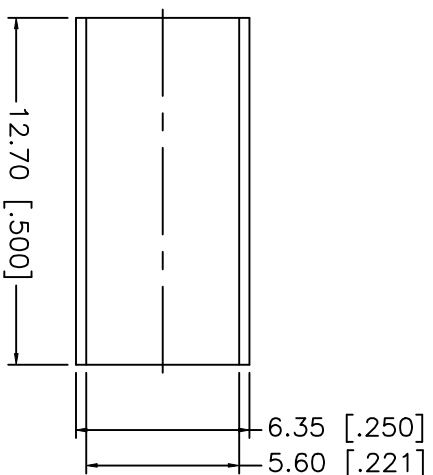
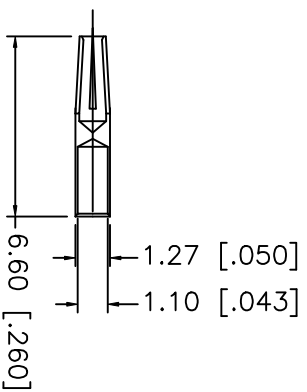
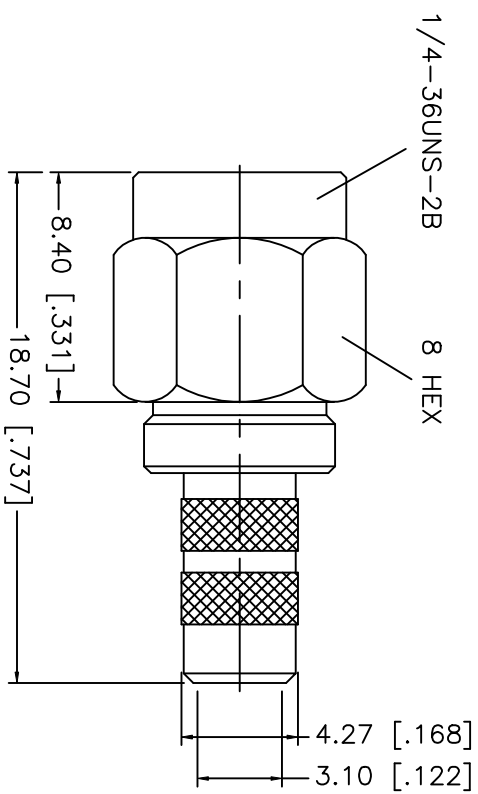
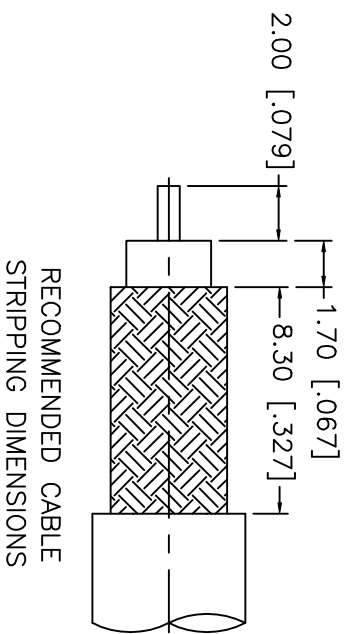


REV.	DATE	DESCRIPTION
NC	01/26/01	UPDATE TITLE BLOCK



- CRIMP NOTES:
1. CRIMPED FERRULE  
HEX CRIMP SIZE .213"
  2. SOLDER CENTER CONTACT

8	UNLESS OTHERWISE SPECIFIED DIMENSIONS ARE IN MILLIMETERS	APPROVALS	DATE	TITLE	SCALE	PART NO.	SHEET
7	DIMENSIONS IN [ ] ARE IN INCHES FOR CUSTOMER REFERENCE ONLY <td>DRAWN G.R.S. <td>01/26/01 <td rowspan="4"> <b>Amphenol - Connex</b>            SMA REVERSE POLARITY CRIMP PLUG            (FOR RG-55/U, 142A/U, 223/U, 400/U)         </td> <td rowspan="4">A</td> <td rowspan="4">99001</td> <td rowspan="4">1 OF 1</td> </td></td>	DRAWN G.R.S. <td>01/26/01 <td rowspan="4"> <b>Amphenol - Connex</b>            SMA REVERSE POLARITY CRIMP PLUG            (FOR RG-55/U, 142A/U, 223/U, 400/U)         </td> <td rowspan="4">A</td> <td rowspan="4">99001</td> <td rowspan="4">1 OF 1</td> </td>	01/26/01 <td rowspan="4"> <b>Amphenol - Connex</b>            SMA REVERSE POLARITY CRIMP PLUG            (FOR RG-55/U, 142A/U, 223/U, 400/U)         </td> <td rowspan="4">A</td> <td rowspan="4">99001</td> <td rowspan="4">1 OF 1</td>	<b>Amphenol - Connex</b> SMA REVERSE POLARITY CRIMP PLUG (FOR RG-55/U, 142A/U, 223/U, 400/U)	A	99001	1 OF 1
6		CHECKED					
5		ISSUED					
4							
3	FERRULE COPPER						
2	CONTACT PIN BER. COPPER						
1	INSULATOR TEFLON						
	BODY BRASS						
	FINISH GOLD						
	DESCRIPTION MATERIAL						

UNLESS OTHERWISE SPECIFIED DIMENSIONS ARE IN MILLIMETERS

DIMENSIONS IN [ ] ARE IN INCHES FOR CUSTOMER REFERENCE ONLY

UNLESS OTHERWISE SPECIFIED TOLERANCES FOR INCHES ARE:  
 .XXX = ± 0.005"  
 .XX = ± 0.010"  
 .X = ± 0.020"

DO NOT SCALE DRAWING