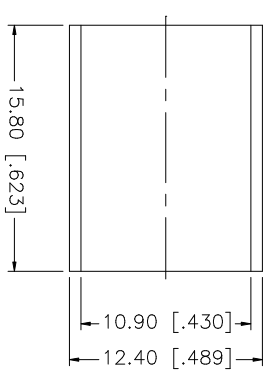
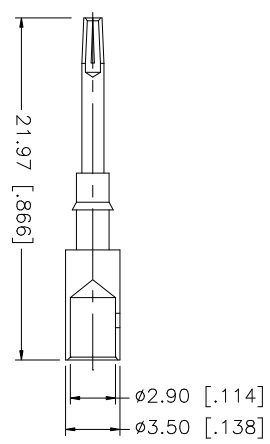
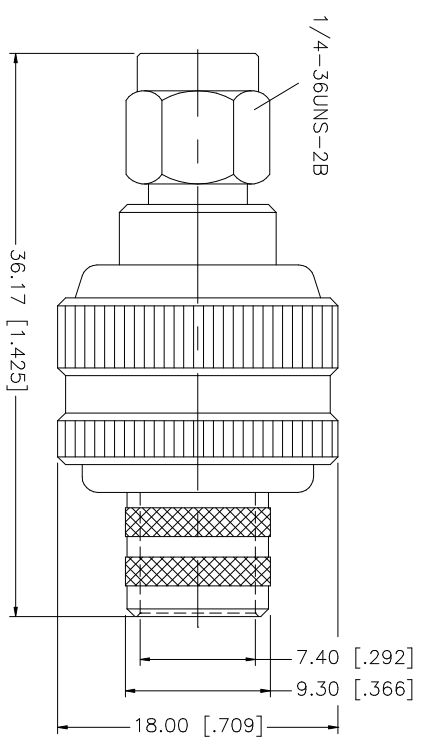
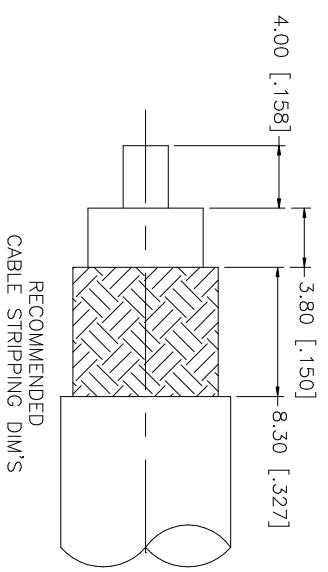


REV.	DATE	DESCRIPTION
NC	08/01/05	INITIAL RELEASE



- NOTES:
1. CRIMPED FERRULE
HEX CRIMP SIZE ".429"
 2. CONTACT PIN TO SOLDER

NO.	DESCRIPTION	MATERIAL	FINISH	QTY	UNLESS OTHERWISE SPECIFIED DIMENSIONS ARE IN INCHES AND FOR CUSTOMER REFERENCE ONLY.	APPROVALS	DATE	PART DESCRIPTION	
8					UNLESS OTHERWISE SPECIFIED DIMENSIONS ARE IN INCHES AND FOR CUSTOMER REFERENCE ONLY.			<p style="text-align: center;">Amphenol Connex</p> <p style="text-align: center;">PART DESCRIPTION</p> <p style="text-align: center;">SMA REVERSE POLARITY CRIMP PLUG (FOR BELDEN 9913, 9914, LMR-400)</p> <p style="text-align: center;">PART NO. 132298RP</p>	
7					UNLESS OTHERWISE SPECIFIED TOLERANCES FOR MILLIMETERS ARE:	DRAWN	08/01/05		
6					0.5 - 8mm ± 0.20mm	G.R.S.			
5					8 - 30mm ± 0.40mm	CHECKED			
4	FERRULE	COPPER	GOLD	1	30 - 120mm ± 0.50mm	ISSUED			
3	CONTACT PIN	BER. COPPER	GOLD	1	UNLESS OTHERWISE SPECIFIED TOLERANCES FOR INCHES ARE:	SHEET	1 OF 1		
2	INSULATOR	TEFLON	NATURAL	1	.020 - .315 = ± 0.007"	CAD FILE			
1	HOUSING/BODY	BRASS	GOLD	1	.315 - 1.180 = ± 0.015" 1.180 - 4.724 = ± 0.020"	C:/132/132298RP.DWG			
	DESCRIPTION	MATERIAL	FINISH	QTY	DO NOT SCALE DRAWING	DWG. NO.	REV.	SIZE	SCALE
						132298RP.DWG	NC	A	NA