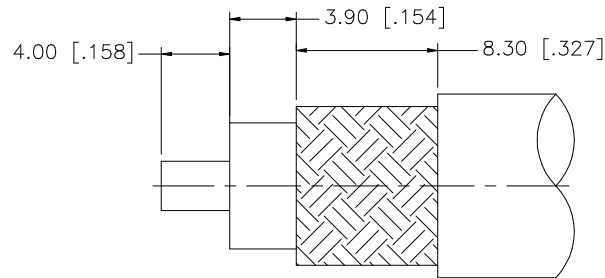
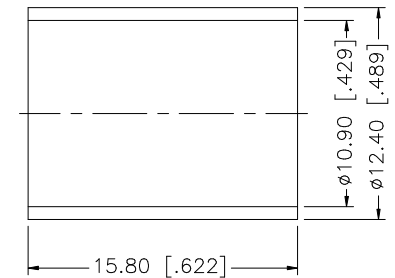
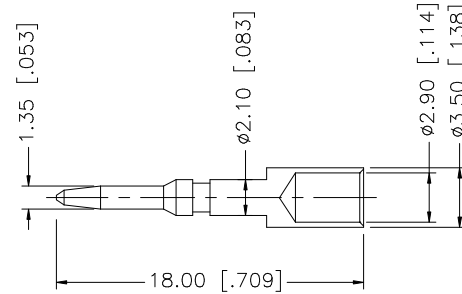
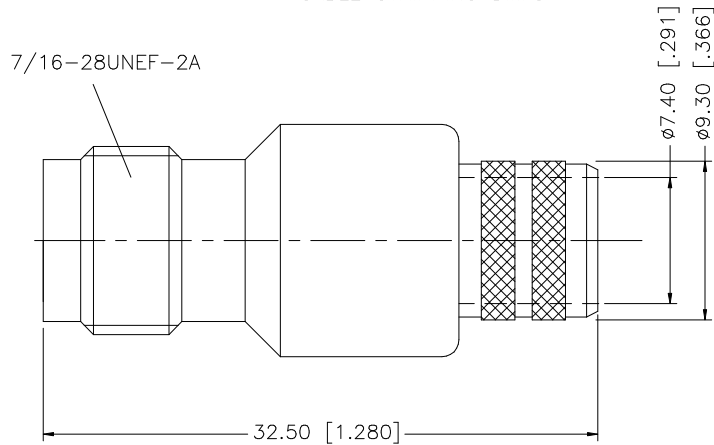


REV.	DATE	DESCRIPTION
NC	05/05/97	INITIAL RELEASE
A	01/11/07	UPDATE DRAWING FORMAT



RECOMMENDED  
CABLE STRIPPING DIM'S



NOTE:

1. CRIMPED FERRULE HEX CRIMP SIZE .429"
2. CRIMPED CONTACT PIN HEX CRIMP SIZE .118"

8				<small>UNLESS OTHERWISE SPECIFIED DIMENSIONS ARE IN MILLIMETERS. DIMENSIONS IN [ ] ARE IN INCHES AND FOR CUSTOMER REFERENCE ONLY.</small>  <small>UNLESS OTHERWISE SPECIFIED TOLERANCES FOR MILLIMETERS ARE:            0.5 - 8mm ± 0.20mm            8 - 30mm ± 0.40mm            30 - 120mm ± 0.50mm</small>  <small>UNLESS OTHERWISE SPECIFIED TOLERANCES FOR INCHES ARE:            .020 - .315 = ± 0.007"            .315 - 1.180 = ± 0.015"            1.180 - 4.724 = ± 0.020"</small>	APPROVALS	DATE	<h1 style="color: blue;">Amphenol Connex</h1> <p><b>TNC REVERSE POLARITY CRIMP JACK (FOR BELDEN 9913, 9914)</b></p>		
7			DRAWN		G.R.S.	01/11/07			
6			CHECKED						
5			ISSUED						
4	FERRULE	COPPER	NICKEL		1				
3	CONTACT PIN	BRASS	GOLD	1					
2	INSULATOR	TEFLON	NATURAL	1					
1	BODY	BRASS	NICKEL	1					
	DESCRIPTION	MATERIAL	FINISH	QTY	DO NOT SCALE DRAWING	CAD FILE	C:/122/122392RP.DWG	PART DESCRIPTION	122392RP
						DWG. NO.	122392RP.DWG	REV.	A
						SIZE	A	SCALE	NA