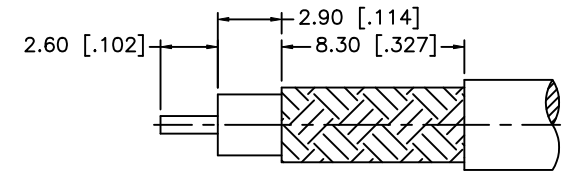
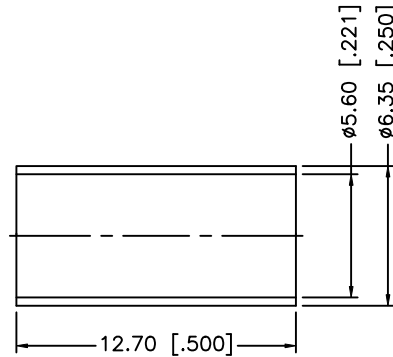
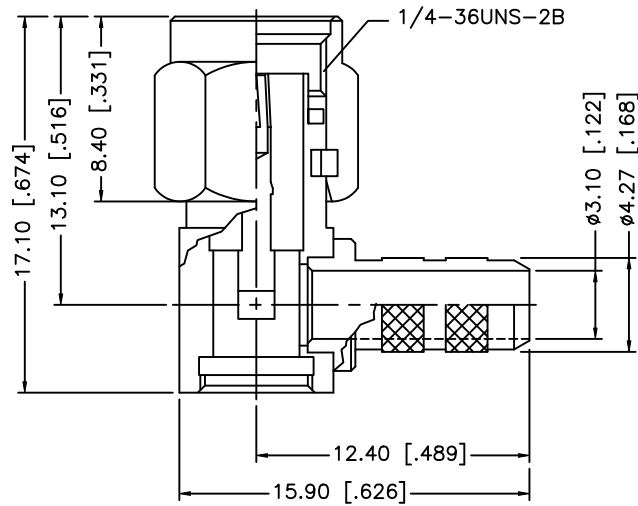
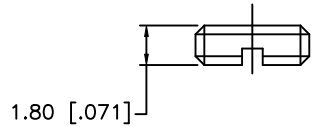


REV.	DATE	ECR NO.	DESCRIPTION
A	04/31/03	-	UPDATE DRAWING FORMAT
B	06/21/05	-	CHANGE 59/U TO 58/U IN PART DESCRIPTION
C	09/10/08	-	CHANGE 58/U TO 55/U IN PART DESCRIPTION



RECOMMENDED
CABLE STRIPPING DIM'S



NOTE:

1. CRIMPED FERRULE HEX CRIMP SIZE .213" [5.41]
2. CONTACT PIN TO SOLDER.

				UNLESS OTHERWISE SPECIFIED DIMENSIONS ARE IN MILLIMETERS. DIMENSIONS IN [] ARE IN INCHES AND FOR CUSTOMER REFERENCE ONLY.	APPROVALS	DATE	Amphenol Connex									
8					DRAWN	GRS				09/10/08	PART DESCRIPTION SMA R/A CRIMP PLUG (FOR RG-55/U, 223/U, 142/U, 400/U CABLE)					
7	FERRULE	COPPER	GOLD	1	CHECKED			PART NO. 132194								
6	COVER	BRASS	GOLD	1	ISSUED									DWG. NO. 132194.DWG		
5	GASKET	SILICONE	RED	1	SHEET	1 OF 1										
4	RETAINER RING	BER. COPPER	NATURAL	1	CAD FILE C:/132/132194.DWG											
3	CONTACT PIN	BRASS	GOLD	1	UNLESS OTHERWISE SPECIFIED TOLERANCES FOR MILLIMETERS ARE: 0.5 - 8mm ± 0.20mm 8 - 30mm ± 0.40mm 30 - 120mm ± 0.50mm UNLESS OTHERWISE SPECIFIED TOLERANCES FOR INCHES ARE: .020 - .315 ± 0.007" .315 - 1.180 ± 0.015" 1.180 - 4.724 ± 0.020"			DO NOT SCALE DRAWING								
2	INSULATOR	PTFE	NATURAL	1												
1	BODY/BARREL	BRASS	GOLD	1												
	DESCRIPTION	MATERIAL	FINISH	QTY												