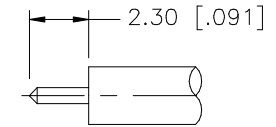
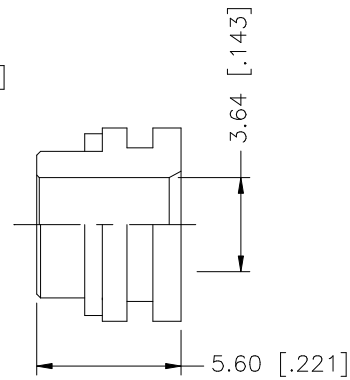
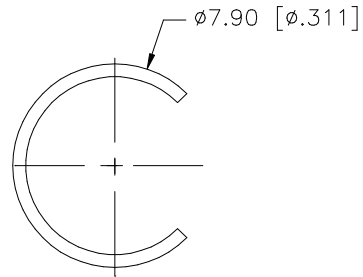
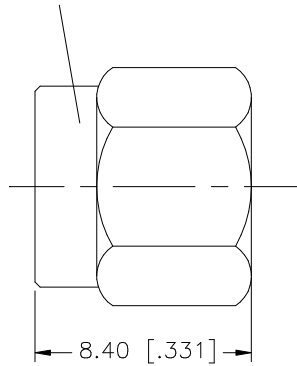


| REV. | DATE     | DESCRIPTION           |
|------|----------|-----------------------|
| NC   | 05/11/99 | INITIAL RELEASE       |
| A    | 12/18/06 | UPDATE DRAWING FORMAT |

1/4-36UNS-2B



RECOMMENDED  
CABLE STRIPPING DIM'S

|   |               |             |         |     |   |           |        |   |   |            |      |          |      |   |       |    |
|---|---------------|-------------|---------|-----|---|-----------|--------|---|---|------------|------|----------|------|---|-------|----|
| 8 |               |             |         |     | <small>UNLESS OTHERWISE SPECIFIED DIMENSIONS ARE IN MILLIMETERS. DIMENSIONS IN [ ] ARE IN INCHES AND FOR CUSTOMER REFERENCE ONLY.</small><br><br><small>UNLESS OTHERWISE SPECIFIED TOLERANCES FOR MILLIMETERS ARE:</small><br>0.5 - 8mm ± 0.20mm<br>8 - 30mm ± 0.40mm<br>30 - 120mm ± 0.50mm<br><br><small>UNLESS OTHERWISE SPECIFIED TOLERANCES FOR INCHES ARE:</small><br>.020 - .315 = ± 0.007"<br>.315 - 1.180 = ± 0.015"<br>1.180 - 4.724 = ± 0.020" | APPROVALS | DATE   | <h1 style="text-align: center; color: blue;">Amphenol Connex</h1> |   |            |      |          |      |   |       |    |
| 7 |               |             |         |     |   | DRAWN     | G.R.S. |   |   |            |      | 12/18/06 |      |   |       |    |
| 6 |               |             |         |     |   | CHECKED   |        |   | PART DESCRIPTION  |            |      |          |      |   |       |    |
| 5 |               |             |         |     |   | ISSUED    |        |   | SMA DIRECT SOLDER PLUG<br>(FOR .141" SEMI-RIGID, SHORT PROFILE CABLE) |            |      |          |      |   |       |    |
| 4 |               |             |         |     | SHEET   | 1 OF 1    |        | PART NO.  |   |            |      |          |      |   |       |    |
| 3 | RETAINER RING | BER. COPPER | NATURAL | 1   |   |           |        | 132266  |   |            |      |          |      |   |       |    |
| 2 | GASKET        | SILICONE    | RED     | 1   |   |           |        |   |   |            |      |          |      |   |       |    |
| 1 | BODY          | BRASS       | NICKEL  | 1   |   |           |        |   |   |            |      |          |      |   |       |    |
|   | DESCRIPTION   | MATERIAL    | FINISH  | QTY | DO NOT SCALE DRAWING  |           |        | DWG. NO.  |   | 132266.DWG | REV. | A        | SIZE | A | SCALE | NA |