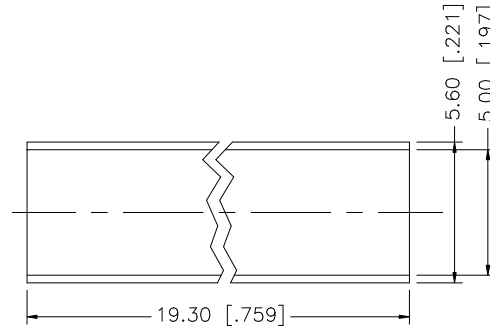
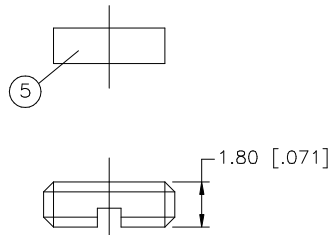
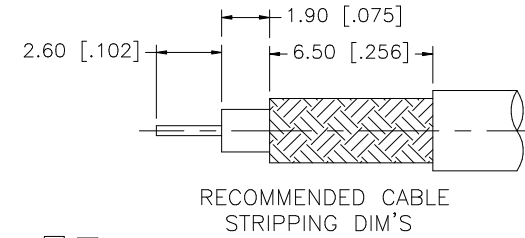
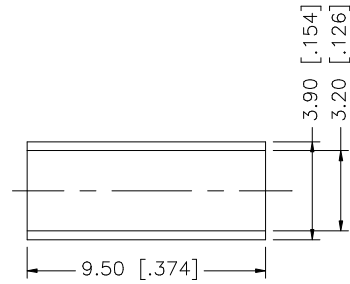
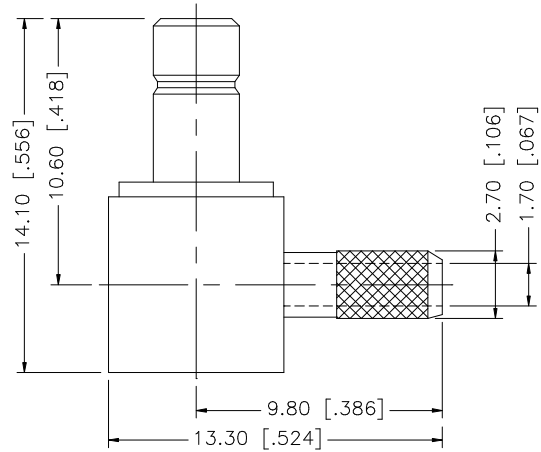


REV.	DATE	DESCRIPTION
NC	02/24/03	INITIAL RELEASE



NOTE:

1. CRIMPED FERRULE
HEX CRIMP SIZE .128"
2. CONTACT PIN TO SOLDER

DESCRIPTION	MATERIAL	FINISH	QTY	DO NOT SCALE DRAWING	APPROVALS	DATE	DWG. NO.	REV.	SIZE	SCALE		
8	HEAT SHRINK TUBE		1	<small>UNLESS OTHERWISE SPECIFIED DIMENSIONS ARE IN MILLIMETERS. DIMENSIONS IN [] ARE IN INCHES AND FOR CUSTOMER REFERENCE ONLY.</small> <small>UNLESS OTHERWISE SPECIFIED TOLERANCES FOR MILLIMETERS ARE:</small> 0.5 - 8mm ± 0.20mm 8 - 30mm ± 0.40mm 30 - 120mm ± 0.50mm <small>UNLESS OTHERWISE SPECIFIED TOLERANCES FOR INCHES ARE:</small> .020 - .315 = ± 0.007" .315 - 1.180 = ± 0.015" 1.180 - 4.724 = ± 0.020"			<div style="text-align: center;"> <h1 style="color: blue;">Amphenol Connex</h1> <p>SMB R/A CRIMP JACK (FOR RG-174/U, 188A/U, 316/U CABLE)</p> </div>					
7	FERRULE	COPPER	GOLD		1	DRAWN		G.R.S.	02/24/03			
6	COVER	BRASS	GOLD		1	CHECKED						
5	INSULATOR	P.E.	NATURAL		1	ISSUED						
4	INSULATOR	TEFLON	NATURAL		1	SHEET		1 OF 1				
3	CONTACT PIN	BRASS	GOLD		1							
2	BARREL	BRASS	GOLD		1							
1	BODY	BRASS	GOLD		1							
					CAD FILE	C:/142/142252.DWG	142252.DWG	NC	A	NA		