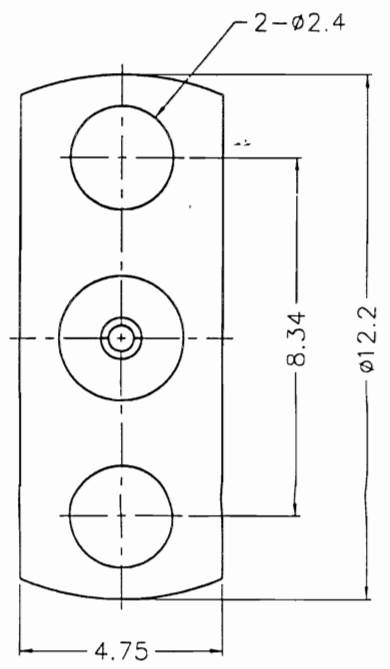
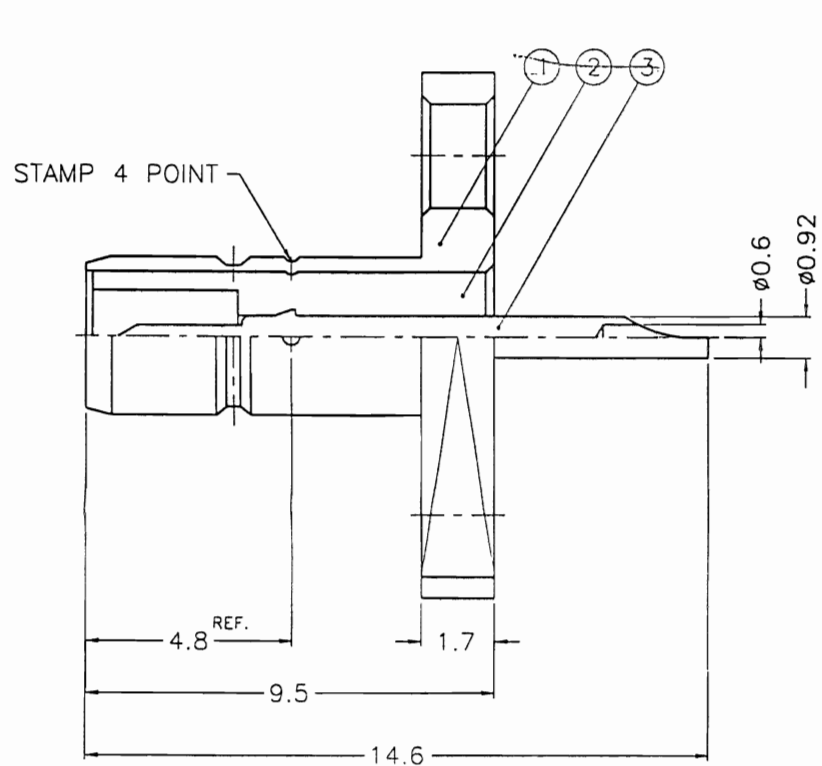


1 | 2 | 3 | 4 | 5 | 6 | 7 | 8

REVISIONS		
ISS	ZONE	DESCRIPTION\APPROVED\DATE



- NOTES: FINISH (PLATING THICKNESS IN MICRO-INCHES)
1. BRASS PER QQ-B-626
  2. GOLD PL. 3 MIN. THICK OVER NICKEL PL. 100 MIN. THICK OVER COPPER STRIKE
  3. GOLD PL. 30 MIN. THICK OVER NICKEL PL. 100 MIN. THICK OVER COPPER STRIKE
  4. TEFLON MIL-P-19468

87.9.14  
開發部

NO.	DESCRIPTION	MATERIAL	FINISH	Q'TY	DRAWING NO.
3	CONTACT PIN	NOTE 1	NOTE (3)	1	SMB1551B2-3
2	INSULATOR	NOTE 4	NATURAL	1	SMB1551B2-2T-50
1	BODY	NOTE 1	NOTE (2)	1	SMB1551B2-1

DIMENSIONS ARE IN MILLIMETERS		PART NO.	
UNLESS OTHERWISE SPECIFIED TOLERANCES			
0.5-6	= ±0.2	APPROVED	DATE
6-30	= ±0.4	<i>Mark C</i>	09-10-98'
30-120	= ±0.6	CHECKED	DATE
120-315	= ±1	<i>Mark C</i>	09-10-98'
315-1000	= ±1.6	DRAWN	DATE
1000-2000	= ±2.4	ALEX	09-10-98'

**Amphenol Connex**

TITLE: SMB PANEL MOUNT RECEPTACLE JACK

DRAWING NO. 142106

KJ-SMB1551B2-3GT30G-50

FILE NO. F:\DWG\SMB\1551B2\50\3GT30G

1 | 2 | 3 | 4 | 5 | 6 | 7 | 8