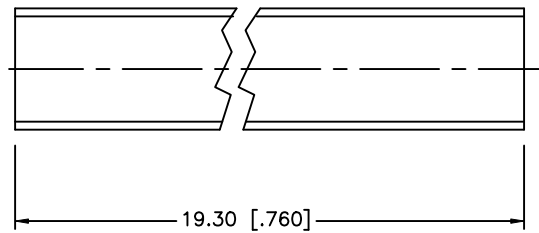
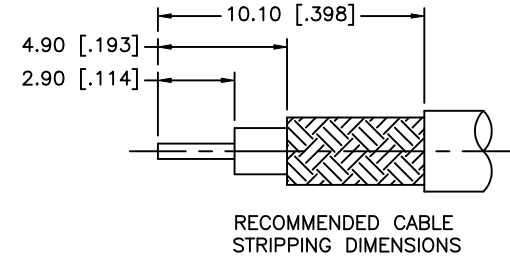
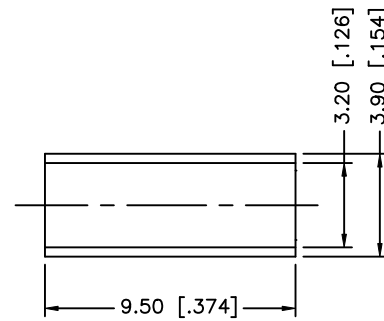
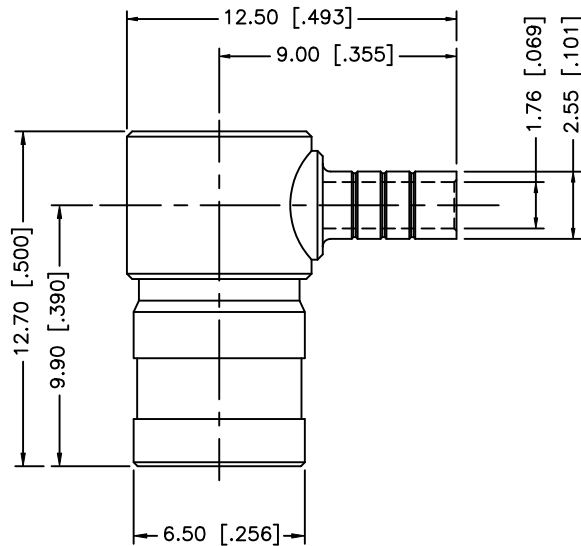
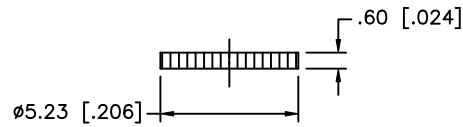


| REV. | DATE | ECR NO. | DESCRIPTION |
|------|----------|---------|--|
| A | 03/20/03 | - | UPDATE PART DIMENSIONS / DRAWING FORMAT |
| B | 05/08/07 | - | REVISE BARREL, FERRULE DIMENSIONS |
| C | 11/12/08 | - | REVISE HOUSING, BODY, FERRULE, COVER PLATING TO GOLD |



- NOTE:
 1. CRIMPED FERRULE HEX CRIMP SIZE .128"
 2. CONTACT PIN TO SOLDER

| QTY | DESCRIPTION | MATERIAL | FINISH |
|-----|------------------|-------------|---------|
| 1 | HOUSING | DIE CAST | GOLD |
| 1 | BODY | BRASS | GOLD |
| 1 | INSULATOR | PTFE | NATURAL |
| 3 | CONTACT PIN | BER. COPPER | GOLD |
| 1 | FERRULE | COPPER | GOLD |
| 6 | COVER | BRASS | GOLD |
| 1 | HEAT SHRINK TUBE | | |

UNLESS OTHERWISE SPECIFIED DIMENSIONS ARE IN MILLIMETERS. DIMENSIONS IN [] ARE IN INCHES AND FOR CUSTOMER REFERENCE ONLY.

UNLESS OTHERWISE SPECIFIED TOLERANCES FOR MILLIMETERS ARE:
 0.5 - 8mm ± 0.20mm
 8 - 30mm ± 0.40mm
 30 - 120mm ± 0.50mm

UNLESS OTHERWISE SPECIFIED TOLERANCES FOR INCHES ARE:
 .020 - .315 ± 0.007"
 .315 - 1.180 ± 0.015"
 1.180 - 4.724 ± 0.020"

DO NOT SCALE DRAWING

| APPROVALS | DATE |
|--------------|-------------------|
| DRAWN GRS | 11/12/08 |
| CHECKED | |
| ISSUED | |
| SHEET 1 OF 1 | |
| CAD FILE | C:/142/142194.DWG |

Amphenol Connex

PART DESCRIPTION
**SMB R/A CRIMP PLUG
 (FOR RG-174/U, 188A/U, 316/U CABLE)**

| PART NO. | DWG. NO. | REV. | SIZE | SCALE |
|----------|------------|------|------|-------|
| 142194 | 142194.DWG | NC | A | NA |