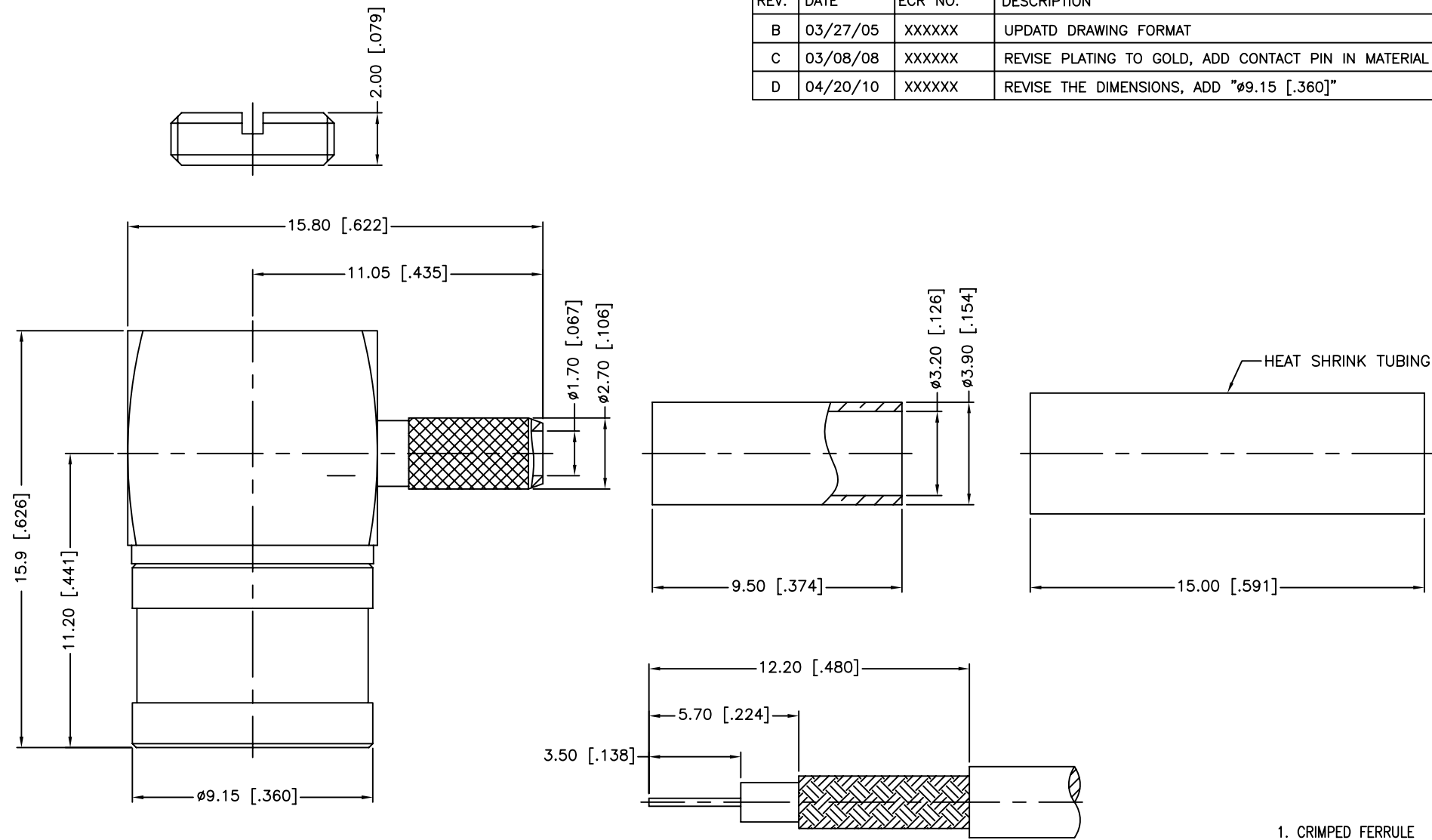


REV.	DATE	ECR NO.	DESCRIPTION
B	03/27/05	XXXXXX	UPDATD DRAWING FORMAT
C	03/08/08	XXXXXX	REVISE PLATING TO GOLD, ADD CONTACT PIN IN MATERIAL CALLOUT
D	04/20/10	XXXXXX	REVISE THE DIMENSIONS, ADD "ø9.15 [.360]"



RECOMMENDED
CABLE STRIPPING DIM'S

1. CRIMPED FERRULE
HEX CRIMP SIZE .128"
2. CONTACT PIN TO SOLDER

DESCRIPTION	MATERIAL	FINISH	QTY	DO NOT SCALE DRAWING	APPROVALS	DATE	Amphenol Connex					
9	HEAT SHRINK TUBING	BLACK	1	<small>UNLESS OTHERWISE SPECIFIED DIMENSIONS ARE IN MILLIMETERS. DIMENSIONS IN [] ARE IN INCHES AND FOR CUSTOMER REFERENCE ONLY.</small> <small>UNLESS OTHERWISE SPECIFIED TOLERANCES FOR MILLIMETERS ARE: 0.5 - 8mm ± 0.20mm 8 - 30mm ± 0.40mm 30 - 120mm ± 0.50mm</small> <small>UNLESS OTHERWISE SPECIFIED TOLERANCES FOR INCHES ARE: .020 - .315 ± 0.007" .315 - 1.180 ± 0.015" 1.180 - 4.724 ± 0.020"</small>	DRAWN	M.ZHANG	04/20/10	SMB R/A CRIMP PLUG (FOR RG-179/U, 187A/U - 75 OHM)				
8	FERRULE	BRASS	GOLD		1	CHECKED						
7	NUT	BRASS	GOLD		1	ISSUED						
6	RETAINER RING	BURYLLIUM COPPER	NATURAL		1	SHEET	1 OF 1	PART NO. 142115				
5	CONTACT PIN	BURYLLIUM COPPER	GOLD		1	CAD FILE C:/CONNEX/142115.DWG			DWG. NO. 142115.DWG			
4	INSULATOR	PTFE	NATURAL		1	REV. D			SIZE A			
3	BARREL	BRASS	GOLD		1	SCALE NA						
2	BODY	BRASS	GOLD		1							
1	SHELL	BRASS	GOLD		1							