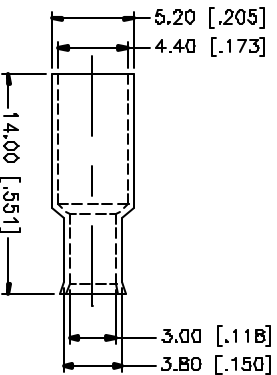
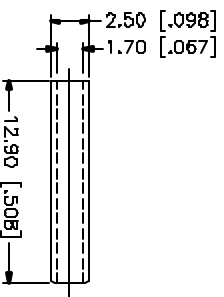
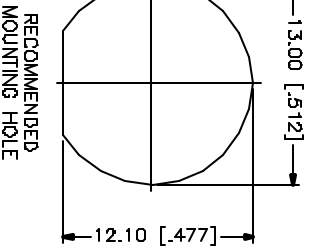
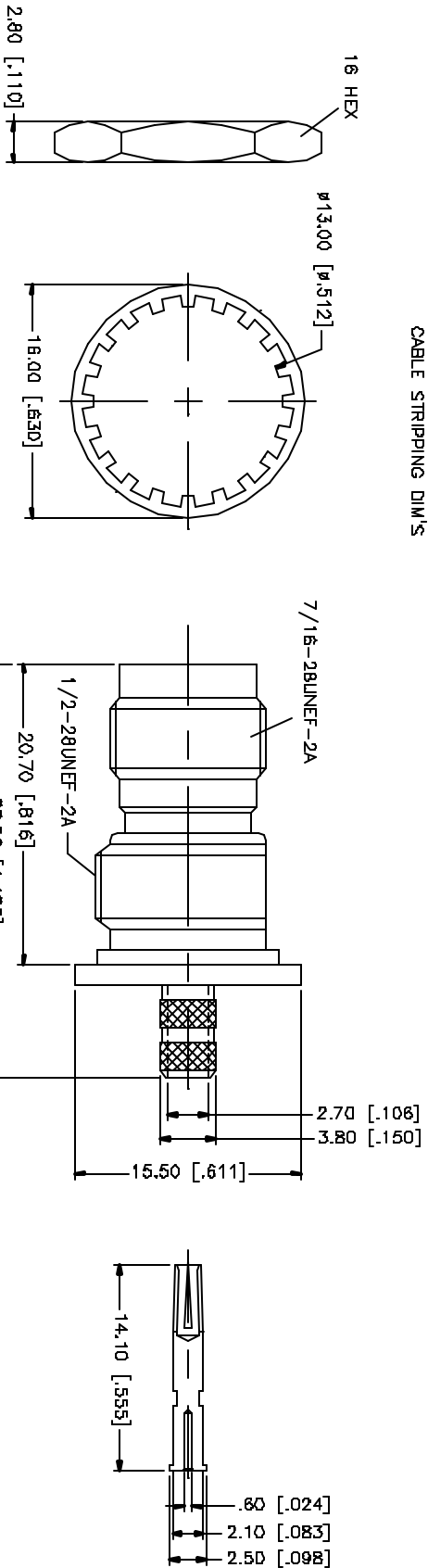
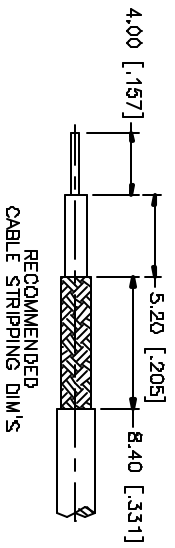


REV.	DATE	DESCRIPTION
A	05/01/04	UPDATE PLATING SPECS.



- NOTES:
1. CRIMPED FERRULE
HEX CRIMPED SIZE .178"
 2. CRIMPED CONTACT PIN
HEX CRIMP SIZE .068"

QTY	FINISH	MATERIAL	DESCRIPTION
1	NICKEL	COPPER	FERRULE
1	NATURAL	DELFIN	SLEEVE
1	NICKEL	BRASS	HEX NUT
1	NICKEL	BRASS	LOCK WASHER
1	GOLD	PHOS. BRONZE	CONTACT PIN
1	NATURAL	TEFLON	INSULATOR
1	NICKEL	BRASS	BODY
			DESCRIPTION

APPROVALS	DATE
DRAWN G.R.S.	05/01/04
CHECKED	
ISSUED	
SHEET 1 OF 1	

PART NO.	DWG. NO.	REV.	SIZE	SCALE
122210	122210.DWG	A	A	NA

PART DESCRIPTION	
TNC BULKHEAD ISOLATED CRIMP JACK (FOR-RG174/U, 188A/U, 316/U)	

UNLESS OTHERWISE SPECIFIED, DIMENSIONS ARE IN MILLIMETERS AND DECIMALS ARE TO BE USED UNLESS INDICATED OTHERWISE FOR MILLIMETERS AND DIMENSIONS FOR MILLIMETERS ARE 0.5 - 8mm ± 0.20mm 8 - 30mm ± 0.40mm 30 - 120mm ± 0.50mm
UNLESS OTHERWISE SPECIFIED, TOLERANCES FOR ANGLES ARE: ± 0.20° - ± 0.15° ± 0.007° ± 0.15° - ± 0.015° ± 0.015° 1.180 - 4.724 = ± 0.020°
DO NOT SCALE DRAWING

Amphenol Connex