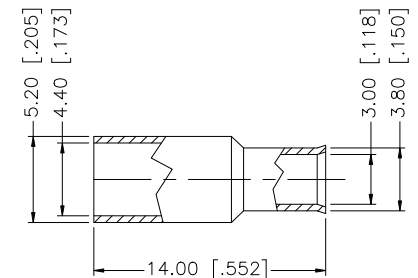
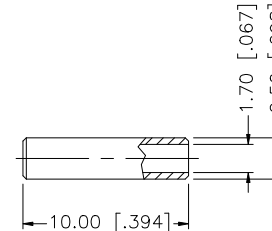
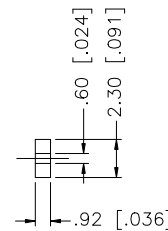
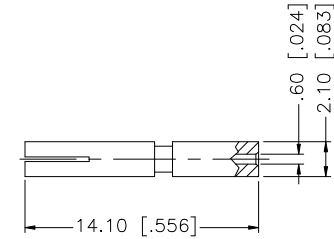
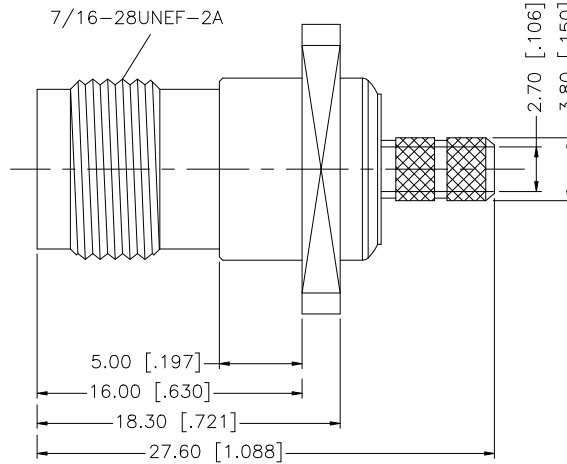
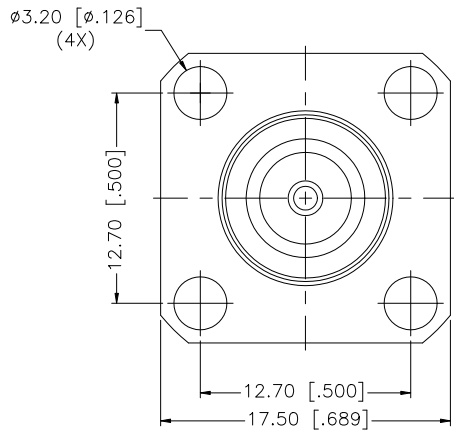
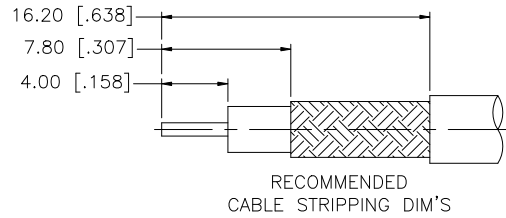


REV.	DATE	ECR NO.	DESCRIPTION
NC	09/29/04	-	INITIAL RELEASE
A	12/28/08	-	DESIGN CHANGE - ADD INSULATOR



NOTE:

1. CRIMPED FERRULE HEX CRIMP SIZE .178" [4.52]
2. CRIMPED CONTACT PIN HEX CRIMP SIZE .068" [1.73]

DESCRIPTION	MATERIAL	FINISH	QTY	DO NOT SCALE DRAWING	APPROVALS	DATE	Amphenol Connex								
8							<b>TNC PANEL CRIMP JACK</b> (RG-174/U, 188A/U, 316/U)								
7															
6	FERRULE	COPPER	NICKEL	1	DRAWN	GRS					12/28/08				
5	SLEEVE	BRASS	NICKEL	1	CHECKED										
4	INSULATOR	PTFE	NATURAL	1	ISSUED										
3	CONTACT PIN	BER. COPPER	GOLD	1	SHEET	1 OF 1	PART NO.		122246						
2	INSULATOR	DELRIN	NATURAL	1	CAD FILE		DWG. NO.		122246.DWG	REV.	A	SIZE	A	SCALE	NA
1	BODY	BRASS	NICKEL	1	C:/122/122246.DWG										

UNLESS OTHERWISE SPECIFIED DIMENSIONS ARE IN MILLIMETERS. DIMENSIONS IN [ ] ARE IN INCHES AND FOR CUSTOMER REFERENCE ONLY.

UNLESS OTHERWISE SPECIFIED TOLERANCES FOR MILLIMETERS ARE:  
 0.5 - 8mm ± 0.20mm  
 8 - 30mm ± 0.40mm  
 30 - 120mm ± 0.50mm

UNLESS OTHERWISE SPECIFIED TOLERANCES FOR INCHES ARE:  
 .020 - .315 = ± 0.007"  
 .315 - 1.180 = ± 0.015"  
 1.180 - 4.724 = ± 0.020"