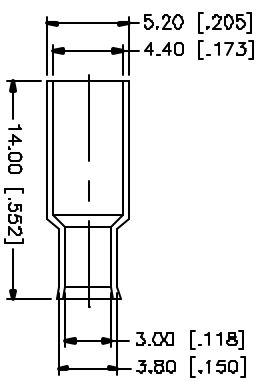
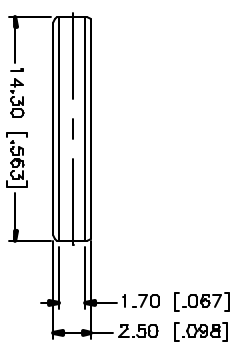
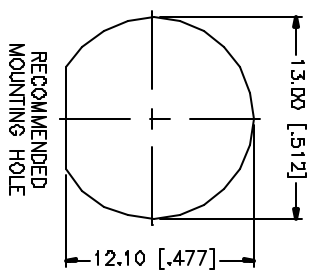
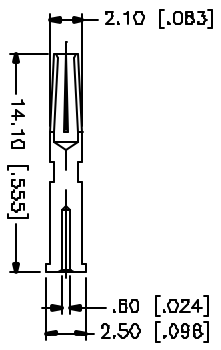
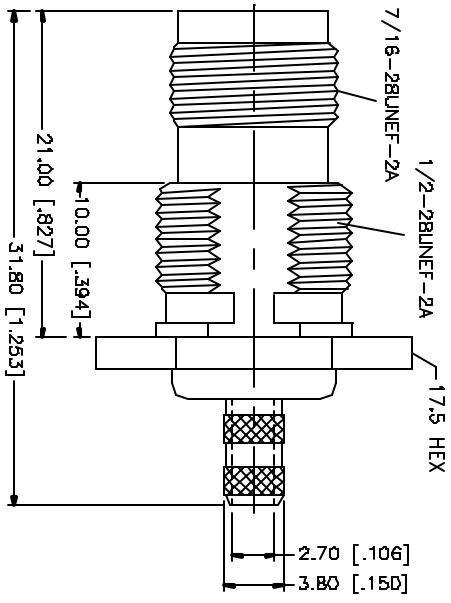
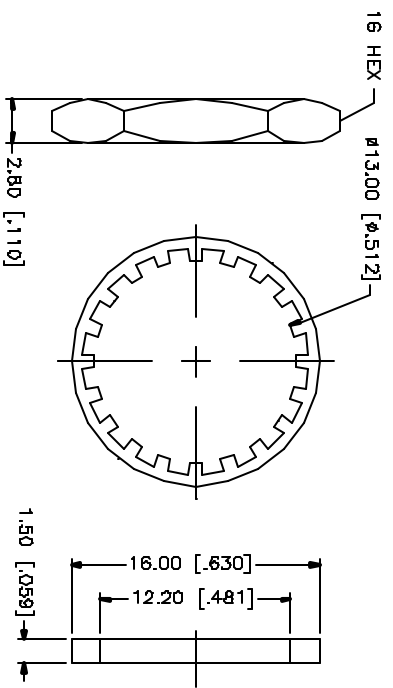
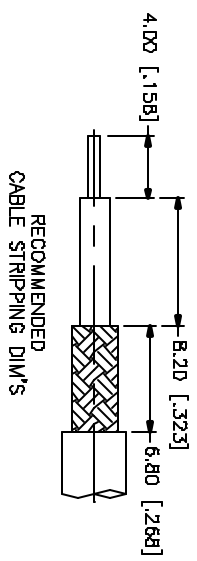


REV.	DATE	DESCRIPTION
A	05/01/04	UPDATE DRAWING FORMAT



NO.	DESCRIPTION	MATERIAL	FINISH	QTY	UNLESS OTHERWISE SPECIFIED, DIMENSIONS ARE IN INCHES AND FOR OTHERWISE REFER TO THE NOTES AND FOR DIMENSIONS REFER TO THE DIMS.	APPROVALS	DATE	PART DESCRIPTION	
8	FERRULE	COPPER	NICKEL	1	UNLESS OTHERWISE SPECIFIED, DIMENSIONS ARE IN INCHES AND FOR OTHERWISE REFER TO THE DIMS.			TNC BULKHEAD CRIMP JACK (FOR RG-174/U, 188A/U, 316/U)	
7	SLEEVE	DELFIN	NATURAL	1					
6	CONTACT PIN	PHOS. BRONZE	GOLD	1		UNLESS OTHERWISE SPECIFIED, DIMENSIONS FOR BULKHEAD ARE: D - 30mm ± 0.20mm A - 30mm ± 0.40mm B - 120mm ± 0.50mm			
5	HEX NUT	BRASS	NICKEL	1		UNLESS OTHERWISE SPECIFIED, DIMENSIONS FOR JACKS ARE: D - 0.20 - 0.315 ± 0.007" A - 0.315 - 1.180 ± 0.015" B - 1.180 - 4.724 ± 0.020"			
4	LOCK WASHER	BRASS	NICKEL	1					
3	GASKET	RUBBER	RED	1					
2	INSULATOR	TEFLON	NATURAL	1					
1	BODY	BRASS	NICKEL	1					
DESCRIPTION									
MATERIAL									
FINISH									
QTY									
DO NOT SCALE DRAWING									
CAD FILE									
C:/122/122428.DWG									
DWG. NO.									
122428.DWG									
REV. A									
SIZE A									
SCALE NA									

Amphenol Connex