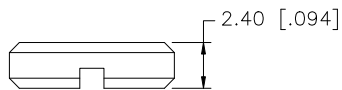
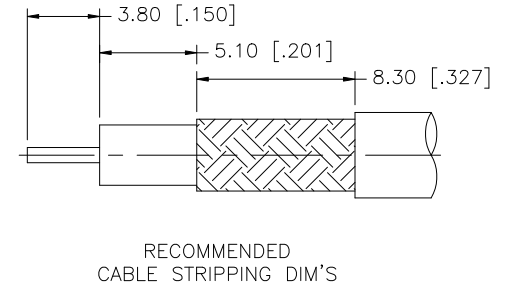
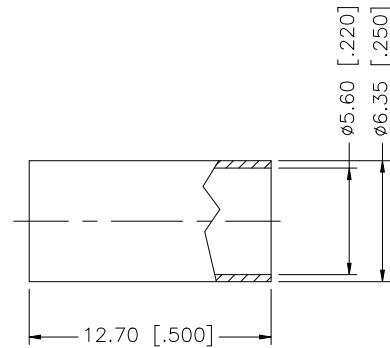
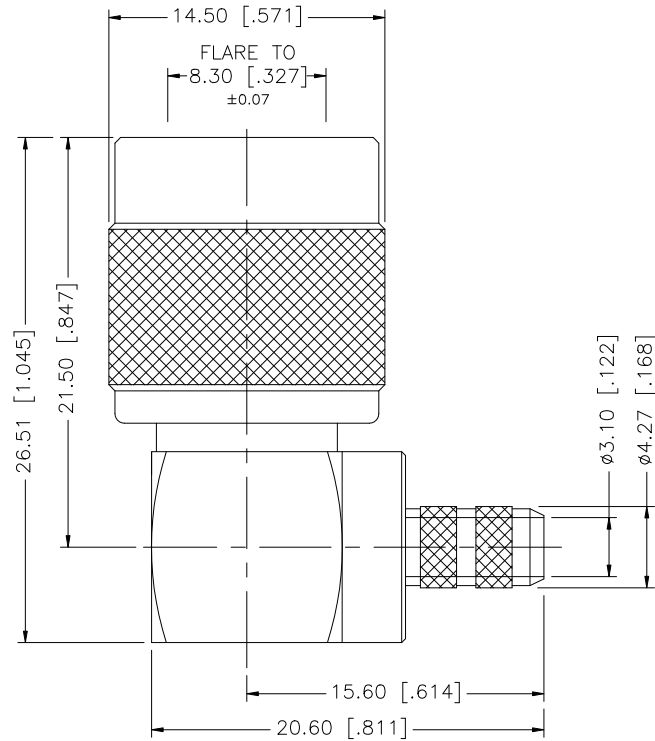


REV.	DATE	ECR NO.	DESCRIPTION
A	05/29/03	-	UPDATE DRAWING FORMAT.
B	01/04/09	-	ADD HEX CRIMP NOTES.



NOTE:

1. CRIMPED FERRULE HEX CRIMP SIZE .213" [5.41].
2. CONTACT PIN TO SOLDER.

				UNLESS OTHERWISE SPECIFIED DIMENSIONS ARE IN MILLIMETERS. DIMENSIONS IN [ ] ARE IN INCHES AND FOR CUSTOMER REFERENCE ONLY.	APPROVALS	DATE	<b>Amphenol Connex</b>					
8				UNLESS OTHERWISE SPECIFIED TOLERANCES FOR MILLIMETERS ARE: 0.5 - 8mm ± 0.20mm 8 - 30mm ± 0.40mm 30 - 120mm ± 0.50mm  UNLESS OTHERWISE SPECIFIED TOLERANCES FOR INCHES ARE: .020 - .315 = ± 0.007" .315 - 1.180 = ± 0.015" 1.180 - 4.724 = ± 0.020"  DO NOT SCALE DRAWING	DRAWN	GRS					01/04/09	<b>Part Description</b> TNC R/A CRIMP PLUG (FOR RG-55/U, 142A/U, 223/U, 400/U)
7					CHECKED							
6					ISSUED							
5	NUT	BRASS	NICKEL		1	SHEET	1 OF 1	<b>Part No.</b> 122430				
4	FERRULE	COPPER	NICKEL		1	CAD FILE	C:/122/122430.DWG	<b>DWG. NO.</b> 122430.DWG				
3	CONTACT PIN	BRASS	GOLD	1			REV.	B	SIZE	A	SCALE	NA
2	INSULATOR	PTFE	NATURAL	1								
1	BODY	BRASS	NICKEL	1								
DESCRIPTION				MATERIAL	FINISH	QTY						