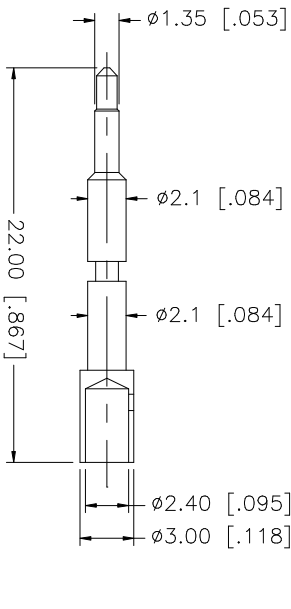
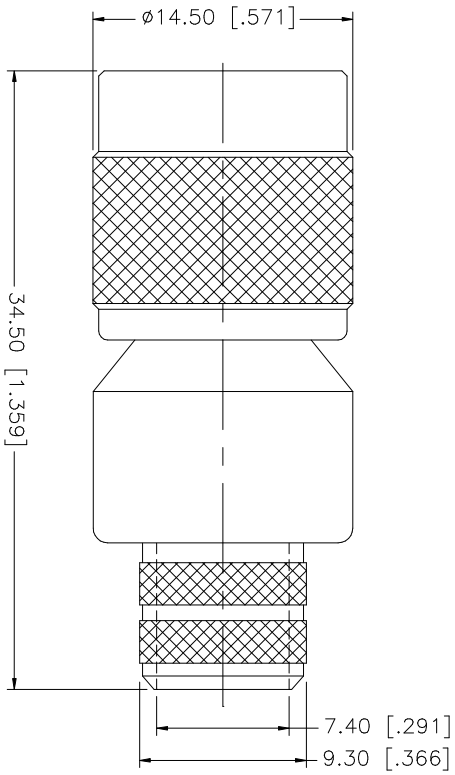
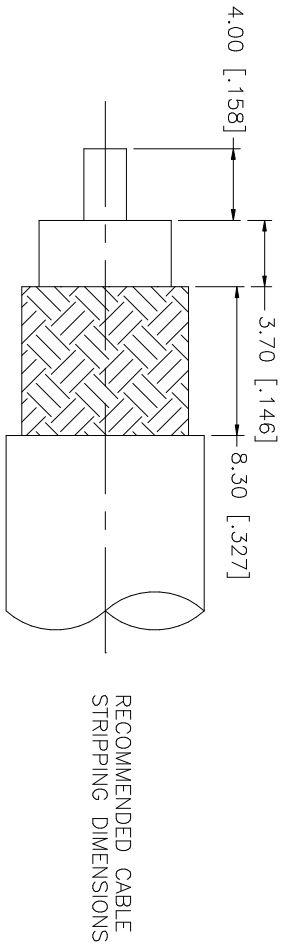
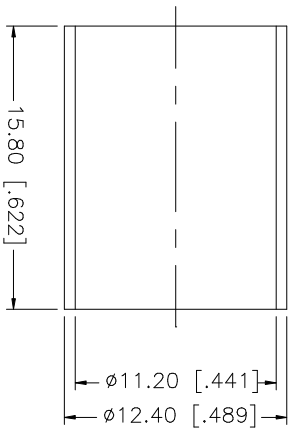


REV.	DATE	DESCRIPTION
NC	08/28/98	INITIAL RELEASE
A	07/20/05	UPDATE DRAWING FORMAT



- CRIMP NOTES:
1. CRIMPED FERRULE  
HEX CRIMP SIZE .429"
  2. CRIMPED CONTACT PIN  
HEX CRIMP SIZE .100"



UNLESS OTHERWISE SPECIFIED DIMENSIONS ARE IN INCHES AND FOR CUSTOMER REFERENCE ONLY. TOLERANCES FOR MILLIMETERS ARE:

0.5 - 8mm ± 0.20mm  
8 - 30mm ± 0.40mm  
30 - 120mm ± 0.50mm

UNLESS OTHERWISE SPECIFIED TOLERANCES FOR INCHES ARE:

.020 - .315 = ± 0.007"  
.315 - 1.180 = ± 0.015"  
1.180 - 4.724 = ± 0.020"

DESCRIPTION	MATERIAL	FINISH	QTY	DO NOT SCALE DRAWING	CAD FILE	APPROVALS	DATE	DWG. NO.	REV.	SIZE	SCALE
8								122398.DWG	A	A	NA
7											
6											
5											
4	FERRULE	BRASS	NICKEL	1							
3	CONTACT PIN	BRASS	GOLD	1							
2	INSULATOR	TEFLON	NATURAL	1							
1	BODY	BRASS	NICKEL	1							
DESCRIPTION					PART DESCRIPTION		TNC CRIMP PLUG (FOR 214/U CABLE)				
DESCRIPTION					SHEET		PART NO. 122398				
DESCRIPTION					1 OF 1		DWG. NO. 122398.DWG				
DESCRIPTION					C:/122/122398.DWG		REV. A				
DESCRIPTION					G.R.S.		07/20/05				
DESCRIPTION					DRAWN		DATE				
DESCRIPTION					CHECKED		DATE				
DESCRIPTION					ISSUED		DATE				
DESCRIPTION					SHEET		DATE				
DESCRIPTION					1 OF 1		DATE				
DESCRIPTION					CAD FILE		DATE				
DESCRIPTION					C:/122/122398.DWG		DATE				

**Amphenol Connex**