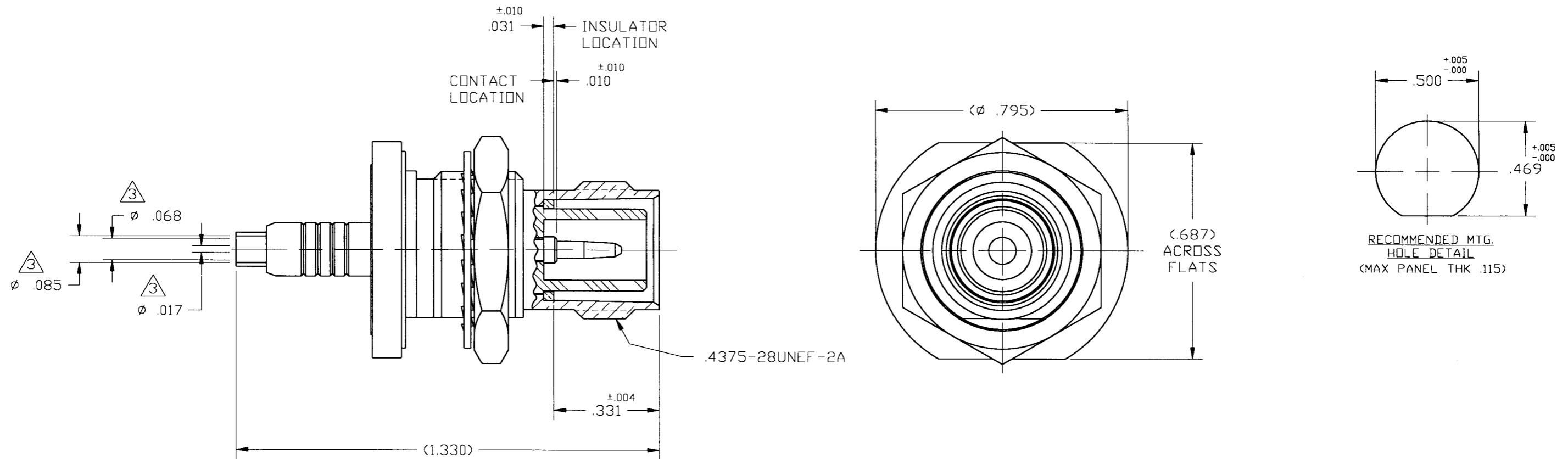


NOTES:

1. PLATING MUST CONFORM TO AMPHENOL SPEC. 349-50560.
2. DIMENSIONS IN PARENTHESIS ARE REFERENCE.
3. CABLE ENTRY DIMENSIONS.
4. SEE AMPHENOL SPEC. 349-50585 FOR CABLE STRIPPING & ASSEMBLY INSTRUCTIONS.
5. DO NOT SCALE THIS DRAWING.
6. UNLESS OTHERWISE SPECIFIED, ALL DIMENSIONS ARE AFTER PLATING.

31-5686		REVISIONS			
DRAWING NO.	REV	DESCRIPTION	DATE	ECO	APPR
THIRD ANGLE PROJ.		OFFICIAL ENG. RELEASE TO MFG.			
	B	ADD SHEET 2	4/30/96	40753	CPM/DR
	C	SEE SHEET 1 FOR REVISIONS	2-21-97	41711	CPM/BG



CUSTOMER OUTLINE DWG.

UNLESS OTHERWISE SPECIFIED, DIMENSIONS ARE IN INCHES AND TOLERANCES ARE: 2 PLACE DECIMAL ±.015 (0,381 mm) 3 PLACE DECIMAL ±.005 (0,127 mm) ANGLES ± 1°	MATERIAL	DRAWN C. McGRATH DATE 6/8/95 ENGINEER D. ROYCE DATE 4/30/96 APPROVED D. ROYCE DATE 4/30/96	TITLE	Amphenol Amphenol Corporation RF/Microwave Operations Danbury, Conn. U.S.A. 06810
	REFERENCE	CAD FILE H:\DEPT611\TNC\031\ASSY\5686SHT2 CODE ID 74868 DWG SIZE B DRAWING NO. 31-5686	& RG 178/U TYPE CABLE SCALE: 3:1 SHEET 2 OF 2 ISSUE C	